

- Adaptable to handicap height
- 1-1/2" NPT inlet connection
- All units factory tested for proper operation

Specifications

Materials

All cabinet materials, including interior piping are Type 304 stainless steel. The fixture is made from heavy gauge stainless steel with seamless welded surfaces.

Construction

All welded construction with exposed welds ground smooth, and all accessible seams and voids eliminated. Fixture will withstand up to 5,000 lb. load on front area of toilet (certified test results of such loading are available upon request). Standard consumption (3.4 GPF). Elongated die-drawn bowl has blowout jet action for positive flush. 30 PSI (flowing into flush valve) required for flushing. Trap has 3-1/2" seal, will pass 2-5/8" diameter ball, and is fully enclosed. **Low consumption (1.6 GPF) not available on these models.**



When choosing the Floodbuster option, a minimum of 35 PSI flowing into the Floodbuster valve is required.

Flush Valve

Flush valve is not included as standard equipment with the unit.

Finish

All exposed steel surfaces to have a bead blast finish (optional #4 satin polished finish, integral contoured seat polished to option #7 sanitary finish). Hinged plastic seat is white.

Wall Anchoring

Unit secured with 5/8" mounting studs (furnished by others) and vandal-resistant cap nuts supplied with special driver. Suitable wall anchors furnished by others.



Back-supplied fixture requires wall openings and accessible chase for installation and maintenance. Some field assembly may be required.



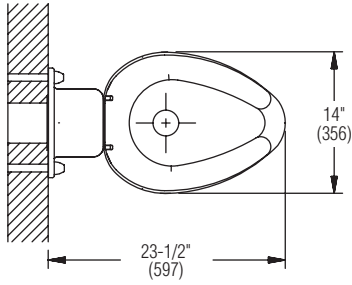
WC7230FM (shown with optional seat)

Model	Description
<input type="checkbox"/> WC7230FM	Front-Mounted Bubble Back Blowout Jet Stainless Steel Toilet
Required Selections (Must select one from each category)	
Supply:	
<input type="checkbox"/> BACK Back Supply	<input type="checkbox"/> TOP Top Supply
Toilet Seat (select one):	
<input type="checkbox"/> ISEAT Integral Seat	<input type="checkbox"/> PSEAT Plastic Seat (White)
Finish (select one):	
<input type="checkbox"/> BB Bead Blast (Standard)	<input type="checkbox"/> PS Polished Stainless Steel
Optional Selections	
Water Closet Waste Outlet Accessories:	
<input type="checkbox"/> GSKT Neoprene Flange Gasket	
Floodbuster (must be located in chase):	
<input type="checkbox"/> FBM Mechanical Floodbuster	

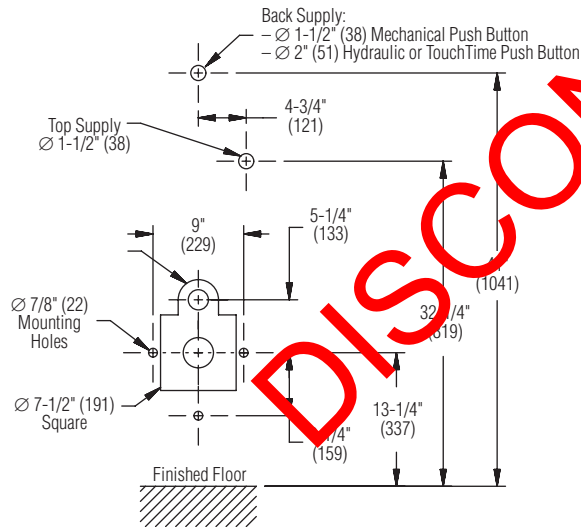
DISCONTINUED



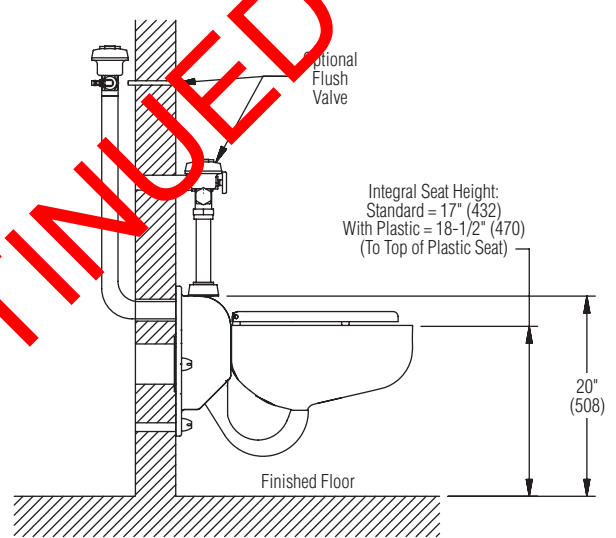
TOP VIEW



ROUGH-IN



SIDE VIEW



DISCONTINUED