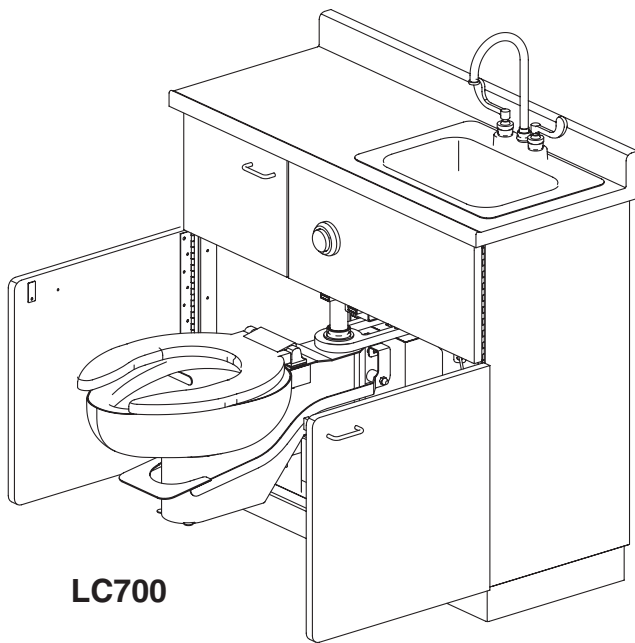


Installation

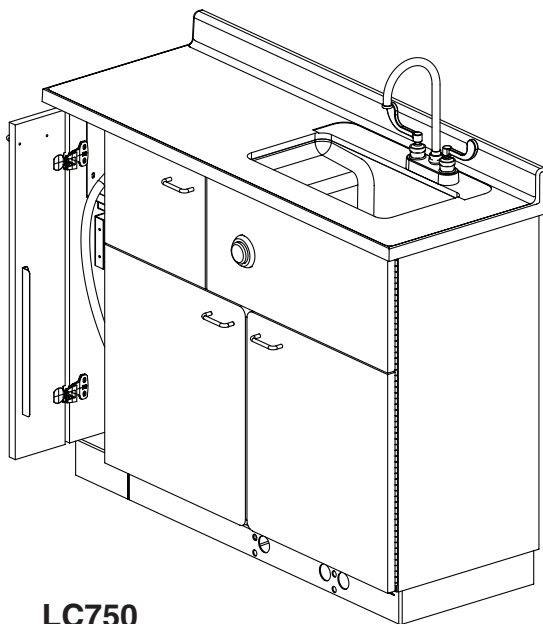
LC700, LC750

Patient Care Unit, Pivot Water Closet

U.S. Patent No. 6,986,171



LC700



LC750

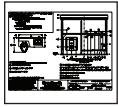
Table of Contents

Pre-Installation Information	2
Supplies Required	2
Step 1: Unpacking	2
Step 2: Floor Anchors	3
Step 3: Water Closet and Waste Connections	3
Step 4: Inline Backflow Preventer	3
Step 5: Cabinet and Countertop	4
Step 6: Faucet and Supplies	4
Step 7: Completing Installation	5
Cleaning and Maintenance	6

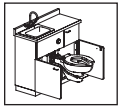
⚠ WARNING! ⚠



Read this entire installation manual to ensure proper installation. When finished with the installation, file this manual with the owner or maintenance department. Compliance and conformity to local codes and ordinances is the responsibility of the installer. Bradley cannot assume any responsibility for personal injury or damage to equipment due to an improperly installed unit.



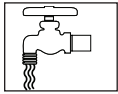
BEFORE beginning installation, all supply, drain and waste piping rough-ins must be completed according to rough-ins received prior to receiving the unit. If you have not received rough-ins, contact your Bradley representative.



Left-hand model is shown throughout this manual. Installation of right-hand model is opposite. This manual covers all models included in the Bradley LC700 and LC750 series. Omit steps that do not apply to the model you are installing. For units with a laminate top, remove the top before beginning installation.



Unpack the unit following the instructions in Step 1 and make sure all parts are accounted for before discarding any packaging material. If any parts are missing, do not begin installation until you obtain the missing parts.



Make sure that all water supply lines have been flushed and then completely turned off before beginning installation. Debris in supply lines can cause valves to malfunction.



Product warranties and service parts information may be found on our web site at bradleycorp.com.

Supplies Required:

- Steel angles and hardware for anchoring the water closet (if concrete is lightweight or less than 4" thick)
- Hardware for waste outlet connections
- Shims (for water closet or cabinet installation, if necessary)
- Supply piping to water closet, faucet or foot valve, and bedpan washer
- Waste outlet piping to water closet
- Silicone caulk (for Terreon® top option)
- P-trap and drain piping

1 Unpacking Unit

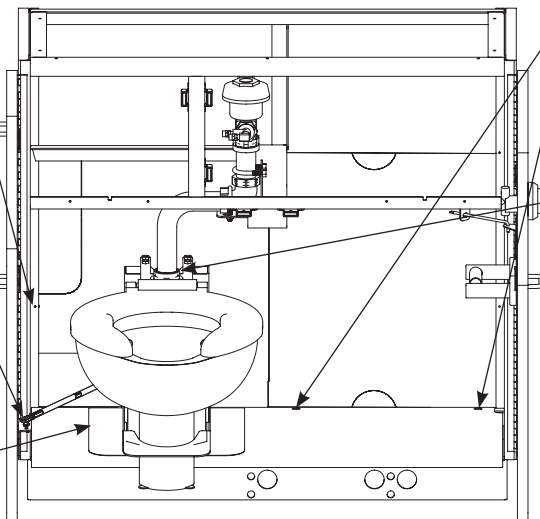


Do Not Discard floor template! Unit is secured to floor template and will serve as your anchor hole locations.

C Unfasten the screw and slide the back panel so that the panel lip unlocks. Remove the panel.

A Remove the packaging around the unit. Note the location of the rod on the linkage bracket. Remove the door linkage fastened on the linkage bracket.

B Lift out the trim piece around the water closet on the cabinet floor.



D Remove the two screws holding the cabinet floor in place and slide the cabinet floor out. Save the screws.

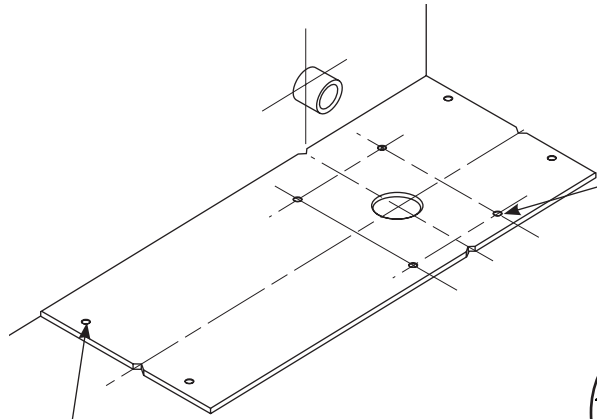
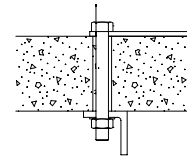
E Remove the inlet nut and piping from the water closet. Unbolt the water closet and cabinet assembly from the floor template. Discard the shipping hardware but DO NOT discard the floor template.

NOTICE: It is not necessary or required to remove the "U" shaped top support bracket or toilet assembly from the pedestal for installation (Step E). Removal of these parts can damage o-rings and sealing surfaces, causing leakage.

2 Floor Anchors

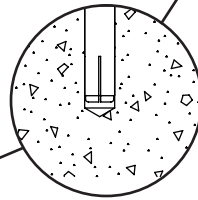
Right hand is shown; left hand is opposite.

If the floor concrete is lightweight or less than 4" thick, Bradley recommends through-bolting to steel angles under the floor (hardware by installer).



B Using a 3/8" concrete drill bit, drill four 1-1/8" deep holes into the cabinet anchoring locations for 1/4" anchors provided.

A Using a 5/8" concrete drill bit, drill four 2-1/8" deep holes into the water closet support anchoring locations for 1/2" anchors provided.

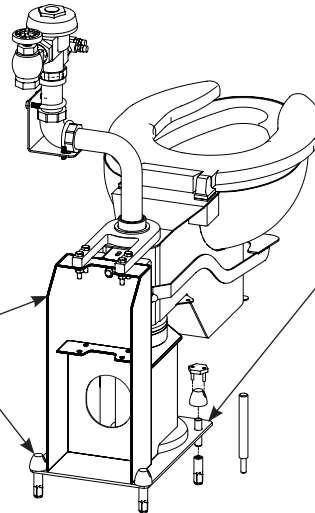


C Remove the template. Drive the four 1/2" anchors flush into the drilled holes for the water closet using the setting tool. Drive the four 1/4" anchors flush into the drilled holes for the cabinet using a hammer and the setting tool.

FOR OPTIONAL FOOT VALVE: After the cabinet is mounted, use the foot valve as a template to mark anchor locations (hardware by installer).

3 Water Closet and Waste Connections

B Square the water closet to the back wall. Level and support the water closet solidly at the four corners using shims (supplied by installer) if necessary. Secure the water closet to the four floor anchors using the 1/2" hex bolts and washers supplied and tighten securely. On units with a back waste connection, tighten the connector clamps at this time.

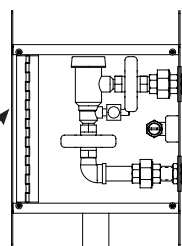


A Place the water closet over the water closet support anchors. Using the gasket provided, connect the water closet to the floor waste outlet. If the waste outlet is through the back, use the no-hub connector.

4 Inline Backflow Preventer (for foot, hand or volume control)

For more details, please reference the rough-in submittal for the backflow preventer.

A Install the backflow preventer to the wall per local code.



C Connect the backflow preventer outlet pipe to the flexible hose.

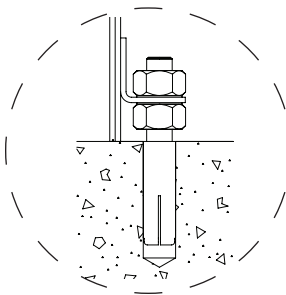
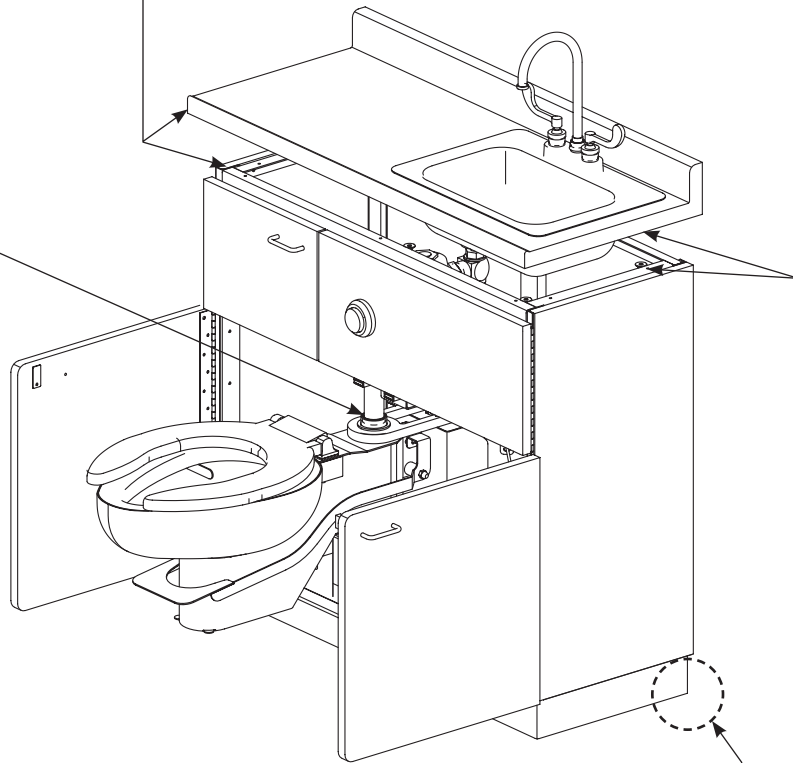
B Connect the 1/2" NPT volume control valve outlet (or the optional foot valve outlet) to the backflow preventer inlet pipe. **IMPORTANT:** The backflow preventer will pipe directly into the hand control inlet. The hand control does not have an outlet.

5 Cabinet and Countertop

FOR OPTIONAL FOOT VALVE: Install the foot valve by screwing into the anchors installed in step 2 (screws and anchors supplied by others).

B Reconnect the connection, pipe and inlet nut to the water closet. Hand-tighten the inlet nut.
Reconnect the inlet pipe to the flush valve.

C **Terreon® Top:** Set the lavatory top in place so the back and wall sides are flush with the edge of the cabinet. Do not secure the top with silicone caulk at this time. The top will be secured after installation is complete and the unit is tested for leaks.
Laminate Top: Reattach the top with screws originally provided when unit was shipped.



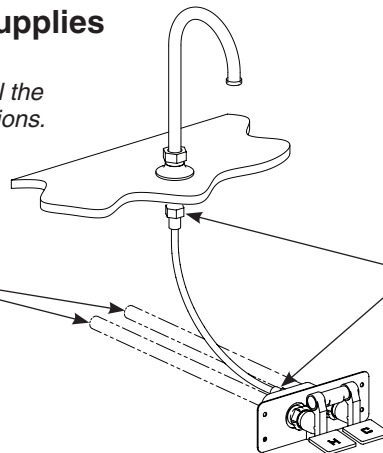
A Install the mounting studs into the (4) cabinet anchors. Over each mounting stud, screw on a 1/4" leveling nut and place a washer over the nut.
With the cabinet floor template removed, position the cabinet in place over the mounting studs. Add a flat washer and 1/4" nut to each cabinet mounting stud. Level the cabinet and tighten the nuts.

6 Faucet, Foot Valve (Optional) and Supplies

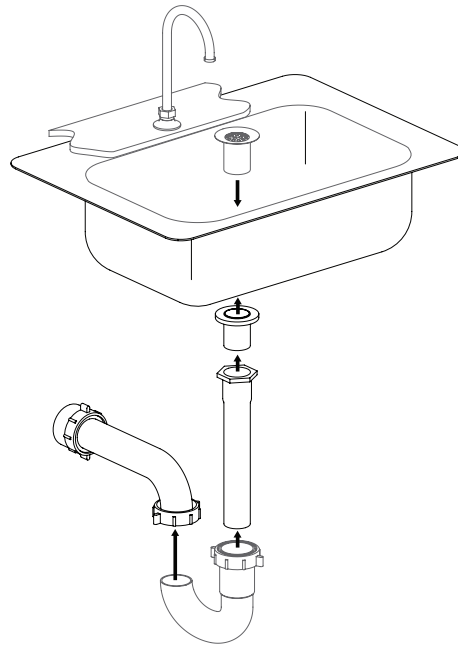
Before connecting supplies, install the faucet per manufacturer's instructions.

B Connect the hot and cold water supply piping to the 1/2" NPT inlet connections on the foot valve.

A Connect one end of the supply hose to the supply shank on the faucet.
Connect the other end of the hose to the foot valve outlet connection.



7 Drain and P-trap



8 Completing Installation

B Reinstall the cabinet floor and secure it to the cabinet frame with the two screws provided.

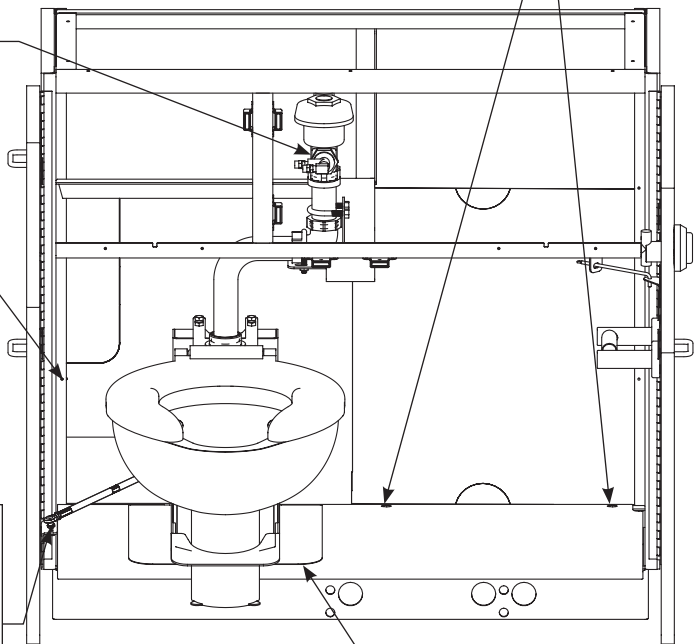
A Connect the flush valve water supply pipe to the flush valve 1" NPT inlet.

D Bring the sliding back panel in from the front of the module. Slide the back panel onto the frame corner and tighten the screw.

E Loosely attach the door linkage to the linkage bracket with the nut. Close the door. If the water closet contacts the back wall before the door closes, adjust the door linkage. If the unit is installed against a corner wall, make sure the door does not come in contact with the wall. When finished, tighten the nut.

F Turn on the water supplies and check for leaks and adequate water flow. Activate the faucet and flush valve several times to purge air from the supply lines.
Terreon® Top only: Apply a bead of silicone caulk between the top and the cabinet to secure the top to the unit.

C Lay the trim piece around the base of the water closet on the cabinet floor. Caulk with silicone caulk between the trim piece and cabinet floor. Caulk the gap between the pedestal and trim piece.



Cleaning and Maintenance for Terreon®

Material Description: Terreon® is an NAHB Certified densified solid surface material composed of polyester resin and is resistant to chemicals, stains, burns and impact. Surface damage can be easily repaired with everyday cleansers or fine grit abrasives.

Routine Cleaning: Clean daily or as often as conditions require using a standard commercial or household cleaner such as Formula 409® or Windex®.

Stubborn Stains: Remove tough stains with Ajax®, Comet®, or Soft-Scrub® and a green Scotch-Brite® pad or lightly sand in a circular motion with 240 grit wet/dry sandpaper. The finish can be renewed with a maroon Scotch-Brite® pad.

Special Situations for Terreon Material

Scratches: Remove scratches with a green Scotch-Brite® pad. The finish can then be renewed with a maroon Scotch-Brite® pad, followed by a white Scotch-Brite® pad or 30-micron sandpaper.

Hard Water Deposits: Remove hard water deposits with a mild solution of vinegar and water. Always rinse the unit thoroughly after cleaning.

Restoring the surface: Use Hope's® Solid Surface cleaner and polish to refresh and protect the Terreon® Solid Surface material. Bradley recommends additional care and maintenance for the darker colored Terreon®, for complete instructions on this additional maintenance refer to Bradley technical document #1505.



Do not use strong acid or alkaline chemicals and cleansers to clean Terreon®. If these chemicals come in contact with the surface, wipe them off immediately and rinse with soapy water. Avoid contact with harsh chemicals such as paint remover, bleach, acetone, etc. Avoid contact with hot pans and objects.

Repair Kits: Terreon® repair kits are available. Contact your Bradley representative or distributor for part numbers and pricing. Repair kits are made to order and have a shelf life of 30 days.



Terreon® is a unique, cast solid surface material. Aggregate flow and distribution as well as shades of color can vary from product to product creating natural characteristics.

Cleaning Stainless Steel

Material Description: Stainless steel is extremely durable, and maintenance is simple and inexpensive. Proper care, particularly under corrosive conditions, is essential. Always start with the simplest solution and work your way toward the more complicated.

Routine Cleaning: Daily or as often as needed use a solution of warm water and soap, detergent, or ammonia. Apply the cleaning solution per the manufactures instructions and always use a soft cloth or sponge to avoid damaging the finish.

Stubborn Stains: To remove stains from stainless steel use a stainless steel cleaner and polish such as Ball® stainless steel cleaner or a soft abrasive. Always follow the manufactures instructions and apply in the same direction as the polish lines.



Never use ordinary steel wool or steel brushes on stainless steel. Always use stainless steel wool or stainless steel brushes.

Special Situations for Stainless Steel Material

Fingerprints and Smears: To remove fingerprints or smears use a high quality stainless steel cleaner and polish in accordance with the manufactures instructions. Many of these products leave a protective coating the helps prevent future smears and fingerprints.

Grease and Oil: Grease and Oil : To remove grease and oil use a quality commercial detergent or caustic cleaner. Apply in accordance to the manufactures instructions and in the direction of the polish lines.

Precautions: Precautions: Avoid prolonged contact with chlorides (bleaches, salts), bromides (sanitizing agents), thiocyanates (pesticides, photography chemicals, and some foods), and iodides on stainless steel equipment, especially if acid conditions exist.



Do not permit salty solutions to evaporate and dry on stainless steel.

The appearance of rust streaks on stainless steel leads to the belief that the stainless steel is rusting. Look for the actual source of the rust in some iron or steel particles which may be touching, but not actually a part of the stainless steel structure.



Strongly acidic or caustic cleaners may attack the steel causing a reddish film to appear. The use of these cleaners should be avoided.

Brand Names

Use of brand names is intended only to indicate a type of cleaner. This does not constitute an endorsement, nor does the omission of any brand name cleaner imply inadequacy. Many products named are regional in distribution, and can be found in local supermarkets, department and hardware stores, or through your cleaning service. It is emphasized that all products should be used in strict accordance with package instructions.