

Express® Lavatory System — SS-Series

- Model SS-2/IR/WH97 (Wall-Hung w/Infrared Control)
 Model SS-2/AST/WH97 (Wall-Hung w/Air Valve Metering)
 Model SS-2/BIR/WH97 (Wall-Hung w/Battery Operated Infrared Control)
 Model SS-2/TT/WH97 (Wall-Hung w/Touch Time™ Metering)

- ADA, ANSI and UFAS Compliant
- Serves One or Two Users at a Time
- Continuous Bowl is constructed of Vandal Resistant Terreon® Solid Surface Material
- Standard Lavatory Spacing on 30" Centers
- Available in 18 colors
- Reliable Infrared Activation, Pushbutton Air Valve, Battery Operated Infrared or Touch Time™ Metering Control

Specifications

Accommodates one or two users. These units handle washroom traffic quickly and economically while providing each user with their own personal space. Lavatories for the Express® system are positioned on 30" centers. The preassembled sprayhead module is equipped with independent stream-formers, each served by separate infrared sensing module and solenoid valve (Model SS-2/IR/WH97), pushbutton air metering valve (Model SS-2/AST/WH97), separate infrared sensing module with single valve control box (Model SS-2/BIR/WH97) or pushbutton Touch Time™ electronic metering valve (Model SS-2/TT/WH97). Standard flow rate of .5 GPM meets industry standards for water conservation while providing enough water to rinse hands quickly and efficiently. Operating range is 20-80 PSI.

Construction

Bowl/Sprayhead Cover

Constructed of Terreon®, a densified solid surface material composed of polyester resin. Terreon® is resistant to chemicals, stains, burns, and impact. Surface damage can be easily repaired with everyday cleansers or fine grit abrasives. Terreon® is NAHB certified to meet ANSI Z124.3, Z124.6 and ANSI/ICPA SS-1-2001.



Pedestal

Panel is composed of vacuum-formed acrylic laminate. Highly resistant to impact, abrasion, acid and corrosion. The panel will not chip, peel or flake.

Support Frame

Bowl assembly and pedestal panel are secured to a heavy-gauge stainless steel support frame mounted to the wall.

Vandal Resistance

The molded sprayhead is an integral part of the bowl module. Its concealed vandal resistant streamformers discourage abuse. The infrared sensor will automatically shut off water flow after 30-45 seconds if a vandal attempts to trigger constant operation by covering the sensor or by placing a stationary object in the sensor's detection area. Pushbuttons are secured to the unit from inside the sprayhead. Air valves, water supplies, control boxes and waste are concealed within the pedestal/support frame assembly.

Document No. 1040

This information is subject to change without formal notice.
0902BLCE (5 Pages Total)



Model SS-2/IR/WH97
Shown with optional liquid soap dispenser.

Mounting Height Options



Standard Height Mounting ADA Compliant

The Wall-Hung Express® mounted at standard height is designed to comply with all ADA guidelines on reaches, clearances, and operation. To comply with ADA, the rim height of the Wall-Hung Express bowl must be 34" above the finished floor.

Juvenile Height Mounting

For juvenile users, the Express® Wall Hung Lavatory must have a rim height no higher than 31" above finished floor to be compliant with Americans with Disabilities Act (ADA) Accessibility Guidelines for Buildings and Facilities: Building Elements Designed for Children's Use; Final Rule.

Standard Equipment

Bowl with two lavatories, pedestal, stainless steel mounting frame (as described at left), 110/24 VAC plug-in transformer, (Model SS-2/IR/WH97) and the following fittings: P-trap; tailpiece; two flexible stainless steel supply connections; and Vernatherm thermostatic mixing valve with combination stop, strainer, and check valves. Single valve control boxes are included in Model SS-2/BIR/WH97 only.

Activation Controls

Infrared Sensor (Model SS-2/IR/WH97)

Each of the streamformers is controlled by a separate solenoid valve. Hands placed within the bowl are detected by an infrared sensor module which activates a flow of tempered water from one streamformer. Shut-off is automatic after hands are removed from the detection area.

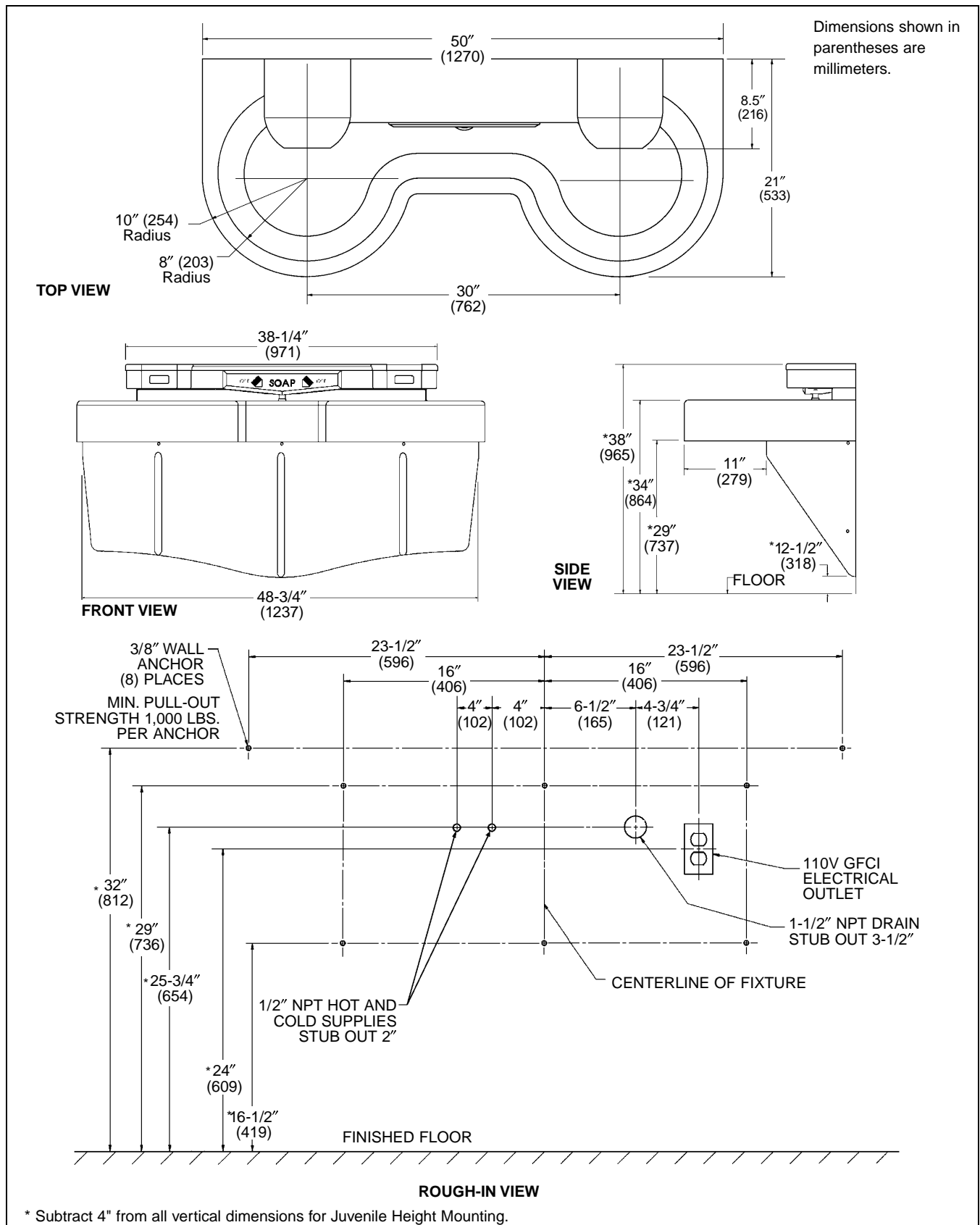


P.O. Box 309, Menomonee Falls, WI 53052-0309
 Phone 1-800-BRADLEY FAX 262-251-5817
 http://www.bradleycorp.com
 Technical Information Fax Service: 1-800-BRADFAX

Express® Lavatory System — SS-Series

Model SS-2/IR/WH97
 Model SS-2/AST/WH97
 Model SS-2/BIR/WH97
 Model SS-2/TT/WH97

PLUMBING FIXTURES TECHNICAL DATA



Bradley Corporation reserves the right to make changes in design and material without formal notice and without incurring obligation. Verify all rough-in dimensions prior to installation.

Express® Lavatory System — SS-Series

- Model SS-2/IR/WH97 (Wall-Hung w/Infrared Control)
 Model SS-2/AST/WH97 (Wall-Hung w/Air Valve Metering)
 Model SS-2/BIR/WH97 (Wall-Hung w/Battery Operated Infrared Control)
 Model SS-2/TT/WH97 (Wall-Hung w/Touch Time™ Metering)

(Infrared Sensor Continued)

The infrared sensor uses a conical shaped transmitting beam, having a detection area adapted to, but not exceeding the bowl perimeter. The detection area projects forward 15° to each side and 15° below horizontal. The adaptive infrared sensor automatically adapts to the bowl after power is turned on. The infrared sensor is not affected by varying color tones or darkness. Direct sunlight or bright washroom lights will not activate the system. Infrared models also include solenoid valves and a low voltage transformer as standard equipment.

- Solenoid – 24V, 50/60 Hz, 3/8" NPT. Few moving parts, and resistant to most chemicals, minerals, and impurities often present in municipal water supplies.
- Low Voltage Transformer – Class II UL/CSA-listed, 100/24 VAC plug-in transformer. Plugs into a standard GFCI electrical outlet.

Air Valve Hand Control (Model SS-2/AST/WH97)

Each push-button pneumatically actuates a non-hold-open, air metering, single temperature valve with field adjustable timing from 0-45 seconds. Factory preset at 10 seconds. Each push activates one valve which, in turn, activates one station (streamformer).

Battery Operated Infrared Sensor (Model SS-2/BIR/WH97)

Each battery powered sensor uses a zone-focused infrared transmitting beam, creating a large detection area not exceeding the bowl perimeter. The sensor is not affected by varying skin tones or darkness. When hands enter the detection area, the sensor starts water flow by opening the valve electronically. When hands leave the detection area, the sensor stops the flow of water by closing the valve.

The 9-volt DC, electronically activated, motor driven valve has few moving parts providing reliable operation that is unaffected by most chemicals and minerals often present in municipal water supplies. The valve is located inside the operation box assembly along with (6) double-A alkaline batteries.

- Single Valve Control Box – Power consumption of 50 micro amps per valve. Control box is constructed of sturdy watertight plastic.

Touch Time Metering Control (Model SS-2/TT/WH97)

Each low voltage push-button actuates a non-hold-open, slow closing anti-hammer solenoid valve that is timed from an electronic potted assembly. Each push-button activates one valve, which, in turn, activates one station (streamformer). Touch Time™ controls water flow at each station through the use of solid state, digital circuitry. Timing is electronically controlled at 15 seconds.

Sample Specification

Express® Model SS-2/IR/WH97

The module multiple lavatory system shall be Bradley Wall-Hung Express® Model No. SS-2/IR/WH97. Multiple lavatory system shall provide two hand washing stations, with the centerline of each station located on 30" centers, perpendicular to the mounting wall. Each hand washing station mounted at standard height shall comply with ANSI and ADA accessibility standards.

- bowl and sprayhead cover material for each station shall be constructed of NAHB Certified Terreon, complying with ANSI Z124.3, Z124.6 and ANSI/ICPA SS-1-2001. Bowl and sprayhead cover finish shall be decorative stone.
- bowl color: Empire Gray (other optional colors available).
- lavatory stations shall be secured to a rigid base consisting of a 1 piece welded stainless steel subframe which shall support all hand washing stations to ANSI Z124.3 load ratings. Supply and waste connections shall be fully concealed within the frame.
- each hand washing station shall have a streamformer served by an independent solenoid valve and actuated by an infrared sensing module with a single conical transmitting beam not exceeding the bowl perimeter. Each sensor shall have a 2–3 second turn-off delay; and automatic shutoff after 30–45 seconds of continuous operation.
- unit sprayhead assembly to be one-piece design, pre-plumbed and pre-wired and shall provide dry surface ledge above water spray area.
- lavatory system shall include all waste and supply connections to wall, and thermostatic mixing valve with stop, strainer and check valves.

Express® Model SS-2/AST/WH97

The modular multiple lavatory system shall be Bradley Wall-Hung Express® Model No. SS-2/AST/WH97. Multiple lavatory system shall provide two hand washing stations, with the centerline of each station located on 30" centers, perpendicular to the mounting wall. Each hand washing station mounted at standard height shall comply with ANSI and ADA accessibility standards.

- bowl and sprayhead cover material for each station shall be constructed of NAHB Certified Terreon, complying with ANSI Z124.3, Z124.6 and ANSI/ICPA SS-1-2001. Bowl and sprayhead cover finish shall be decorative stone.



P.O. Box 309, Menomonee Falls, WI 53052-0309
 Phone 1-800-BRADLEY FAX 262-251-5817
<http://www.bradleycorp.com>
 Technical Information Fax Service: 1-800-BRADFAX

Document No. 1040

This information is subject to change without formal notice.
 0902BLCE (5 pages total)

Express® Lavatory System — SS-Series

- Model SS-2/IR/WH97** (Wall-Hung w/Infrared Control)
Model SS-2/AST/WH97 (Wall-Hung w/Air Valve Metering)
Model SS-2/BIR/WH97 (Wall-Hung w/Battery Operated Infrared Control)
Model SS-2/TT/WH97 (Wall-Hung w/Touch Time™ Metering)

- bowl color: Empire Gray (other optional colors available).
- lavatory stations shall be secured to a rigid base consisting of a 1 piece welded stainless steel subframe which shall support all hand washing stations to ANSI Z124.3 load ratings. Supply and waste connections shall be fully concealed within the frame.
- base shall support all hand washing stations to ANSI Z124.3 load ratings. Each hand washing station shall have a water streamformer served by an independent air-metering valve which is actuated by a push-button.
- unit sprayhead assembly to be one-piece design, pre-plumbed and pre-wired and shall provide dry surface ledge above water spray area.
- lavatory system shall include all waste and supply connections to wall, and thermostatic mixing valve with stop, strainer and check valves.

Express® Model SS-2/BIR/WH97

The module multiple lavatory system shall be Bradley Wall-Hung Express® Model No. SS-2/BIR/WH97. Multiple lavatory system shall provide two hand washing stations, with the centerline of each station located on 30" centers, perpendicular to the mounting wall. Each hand washing station mounted at standard height shall comply with ANSI and ADA accessibility standards.

- bowl and sprayhead cover material for each station shall be constructed of NAHB Certified Terreon, complying with ANSI Z124.3, Z124.6 and ANSI/ICPA SS-1-2001. Bowl and sprayhead cover finish shall be decorative stone.
- bowl color: Empire Gray (other optional colors available).
- lavatory stations shall be secured to a rigid base consisting of a 1 piece welded stainless steel subframe which shall support all hand washing stations to ANSI Z124.3 load ratings. Supply and waste connections shall be fully concealed within the frame.
- each hand washing station shall have a streamformer served by an independent control box and actuated by an infrared sensing module with a single conical transmitting beam not exceeding the bowl perimeter. Each sensor shall have a 1-2 second turn-off delay; and automatic shutoff after approximately 90 seconds of continuous operation.
- unit sprayhead assembly to be one-piece design, pre-plumbed and pre-wired and shall provide dry surface ledge above water spray area.
- lavatory system shall include all waste and supply connections to wall, two single valve control boxes and thermostatic mixing valve with stop, strainer and check valves.

Express® Model SS-2/TT/WH97

The modular multiple lavatory system shall be Bradley Wall-Hung Express® Model No. SS-2/TT/WH97. Multiple lavatory system shall provide two hand washing stations, with the centerline of each station located on 30" centers, perpendicular to the mounting wall. Each hand washing station mounted at standard height shall comply with ANSI and ADA accessibility standards.

- bowl and sprayhead cover material for each station shall be constructed of NAHB Certified Terreon, complying with ANSI Z124.3, Z124.6 and ANSI/ICPA SS-1-2001. Bowl and sprayhead cover finish shall be decorative stone.
- bowl and sprayhead cover color: Empire Gray (other optional colors available).
- lavatory stations shall be secured to a rigid base consisting of a 1 piece welded stainless steel subframe which shall support all hand washing stations to ANSI Z124.3 load ratings. Supply and waste connections shall be fully concealed within the frame.
- base shall support all hand washing stations to ANSI Z124.3 load ratings. Each hand washing station shall have a water streamformer served by a pushbutton and independent Touch Time™ electronic metering valve.
- unit sprayhead assembly to be one-piece design, pre-plumbed and pre-wired and shall provide dry surface ledge above water spray area.
- lavatory system shall include all waste and supply connections to wall, and thermostatic mixing valve with stop, strainer and check valves.

Express® Lavatory System — SS-Series

- Model SS-2/IR/WH97 (Wall-Hung w/Infrared Control)
 Model SS-2/AST/WH97 (Wall-Hung w/Air Valve Metering)
 Model SS-2/BIR/WH97 (Wall-Hung w/Battery Operated Infrared Control)
 Model SS-2/TT/WH97 (Wall-Hung w/Touch Time™ Metering)

Models	
Model No.	Description
<input type="checkbox"/> SS-2/IR/WH97	Express® Lavatory System w/Infrared Control (Wall-Hung)
<input type="checkbox"/> SS-2/AST/WH97	Express® Lavatory System w/Air Metering Valve (Wall-Hung)
<input type="checkbox"/> SS-2/BIR/WH97	Express® Lavatory System w/Battery Operated Infrared Control (Wall-Hung)
<input type="checkbox"/> SS-2/TT/WH97	Express® Lavatory System w/Touch Time™ Metering Valve (Wall-Hung)

STANDARD SELECTIONS

Must select one from each category

Soap Dispenser (Select One):

- LSD Liquid Soap Dispenser (One Integral Dispenser)
 NSD No Soap Dispenser

Water Supply (Select One):

- TMA Vernatherm Thermostatic Mixing Assembly (Hot and Cold Supplies)
 TL Single Tempered Line

Color of Terreon Bowl/Sprayhead Cover (Select One):

- E-GRAY Empire Gray
 BONE Mesa Bone
 O-GRN Oasis Green
 S-BLU Sierra Blue
 M-RED Mojave Red
 PEP-WHT Peppered White
 SAND Sandtrap
 CHAR Charcoal Gray
 WHT-SAND White Sand
 DS-WHT Designer White
 SPHR Sapphire
 EMRLD Emerald
 JADE Jade
 GRAPH Graphite
 ONYX Onyx
 LANNON Lannonstone
 COBBLE Cobblestone
 FIESTA Fiesta

Color of Access Panel/Sprayhead Body (Select One):

- GRAY Gray
 PUTTY Putty
 COAL Coal

Document No. 1040

This information is subject to change without formal notice.
 0902BLCE (5 Pages Total)



P.O. Box 309, Menomonee Falls, WI 53052-0309
 Phone 414-251-6000 FAX 414-251-5817
<http://www.bradleycorp.com>
 Technical Information Fax Service: 1-800-BRADFAX