

Wall-Mounted Eye/Face Wash Fixture Wraparound Skirt (Barrier-Free)

Model S19-220BF

- Complies with American National Standard Z358.1-2004
- Universal Identification Sign and Inspection Tag Included
- Full, One-Year Warranty

Specifications

Barrier-free accessibility. Unit design saves space and fits easily into any work environment. Eyewash operates quickly by a stainless steel push handle. Safe, steady water flow under varying water supply conditions from 30-90 PSI is assured by integral flow control in the sprayhead assembly.

UPC and cUPC Approved:

The Emergency Fixtures are certified to comply with the requirements of the Uniform Plumbing Code and the National Plumbing Code of Canada by the International Association of Plumbing and Mechanical Officials (IAPMO).

Construction

Eyewash bowl and wraparound skirt are stainless steel.

Standard Equipment

Eyewash Bowl

10" (254mm) diameter stainless steel.

Standard Sprayhead Assembly

Chrome-plated brass sprayhead assembly with twin, soft flow, eyewash heads and protective sprayhead covers. The integral flow control assures safe, steady flow under varying water supply conditions from 30-90 PSI.

Face Spray Ring

Chrome-plated circular spray ring provides supplemental face spray. Flow control assures adequate flow from eyewash nozzles and face spray ring from 30-90 PSI.

Valve

Chrome-plated brass 1/2" IPS stay-open ball valve. Hand operated by a large, stainless steel push handle.

Pipe and Fittings

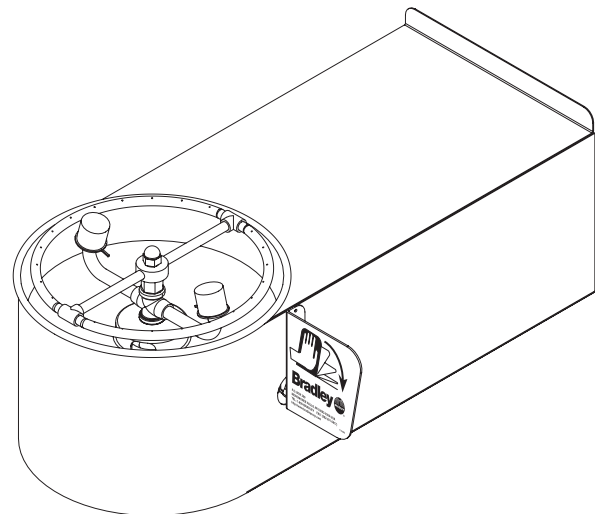
2" Chrome-plated brass.

Waste

1-1/4" drain fitting, wall tube and trap furnished.

Water Supply

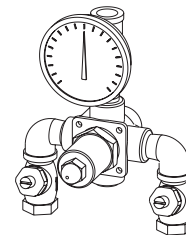
1/2" IPS.



Recommended Option:

Navigator S19-2000 EFX8
Emergency Thermostatic Mixing Valve

NAVIGATOR



Satisfies ANSI Z358.1-2004
tepid water requirements.

Document No. 4270

This information is subject to change without formal notice.
© 2006 Bradley Corporation
10-11-2006 (2 Pages Total)

Bradley 

P.O. Box 309, Menomonee Falls, WI 53052-0309
Phone 1-800-BRADLEY FAX 262-251-5817
Web Site: <http://www.bradleycorp.com>



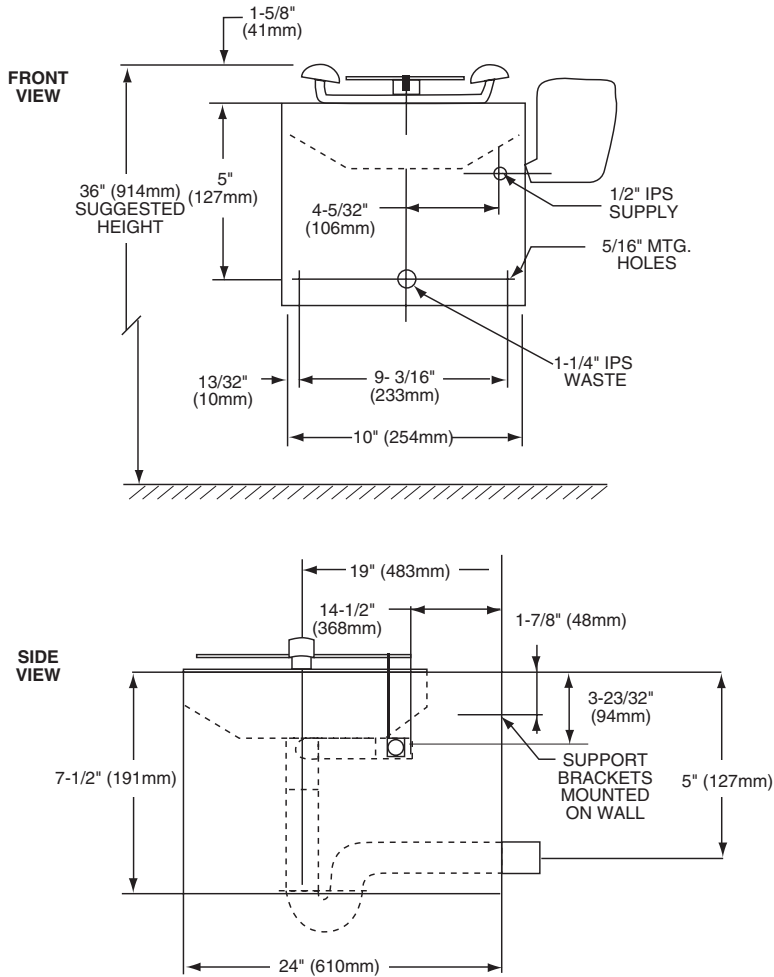
SEI CERTIFIED
MODEL
Z358.1-2004

**PLUMBING FIXTURES
TECHNICAL DATA**

Wall-Mounted Eye/Face Wash Fixture Wraparound Skirt (Barrier-Free)

Model S19-220BF

MODEL	
Model No.	Description
<input type="checkbox"/> S19-220BF	Wall-Mounted Eye/Face Wash Fixture Wraparound Skirt (Barrier-Free)
<input type="checkbox"/> S19-2000	Navigator EFX8 – Emergency Thermostatic Mixing Valve



Document No. 4270

This information is subject to change without formal notice.
© 2006 Bradley Corporation
10-11-2006 (2 Pages Total)



P.O. Box 309, Menomonee Falls, WI 53052-0309
Phone 1-800-BRADLEY FAX 262-251-5817
Web Site: <http://www.bradleycorp.com>