

# Wall-Mounted Eyewash Fixtures (Barrier-Free)

Model S19-220ABF

Model S19-220BBF

- Complies with American National Standard Z358.1-2004
- Galvanized Steel Protected with BRADTECT™ Safety Yellow Coating
- Universal Identification Sign and Inspection Tag Included
- Full, One-Year Warranty

## Specifications

Barrier-free accessibility. Unit design saves space and fits easily into any work environment. Eyewash operates quickly by a large, highly visible push handle. Safe, steady water flow under varying water supply conditions from 30-90 PSI is assured by integral flow control in the sprayhead assembly.

### UPC and cUPC Approved:

The Emergency Fixtures are certified to comply with the requirements of the Uniform Plumbing Code and the National Plumbing Code of Canada by the International Association of Plumbing and Mechanical Officials (IAPMO).

## Construction

Eyewash bowl is corrosion-resistant stainless steel on model S19-220BBF and yellow impact-resistant plastic on model S19-220ABF. The fixture includes stainless steel piping for corrosive environments.

## Standard Equipment

### Eyewash Bowl

10" (254mm) diameter stainless steel or yellow impact-resistant plastic.

### Standard Sprayhead Assembly

Chrome-plated brass sprayhead assembly with twin, soft flow, eyewash heads and protective sprayhead covers. The integral flow control assures safe, steady flow under varying water supply conditions from 30-90 PSI.

### Valve

Chrome-plated brass 1/2" IPS stay-open ball valve. Hand operated by a large, highly visible safety yellow PVC push handle.

### Pipe and Fittings

1/2" stainless steel pipe and bracket.

### Waste

1-1/4" drain fitting, tailpiece and trap furnished.

### Water Supply

1/2" IPS.

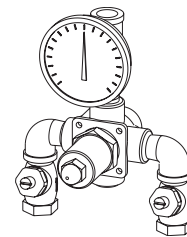


S19-220ABF

### Recommended Option:

Navigator S19-2000 EFX8  
Emergency Thermostatic Mixing Valve

**NAVIGATOR**



Satisfies ANSI Z358.1-2004  
tepid water requirements.

Document No. 4275

This information is subject to change without formal notice.  
© 2006 Bradley Corporation  
10-12-2006 (2 Pages Total)

EF4275.1

**Bradley** 

P.O. Box 309, Menomonee Falls, WI 53052-0309  
Phone 1-800-BRADLEY FAX 262-251-5817  
Web Site: <http://www.bradleycorp.com>



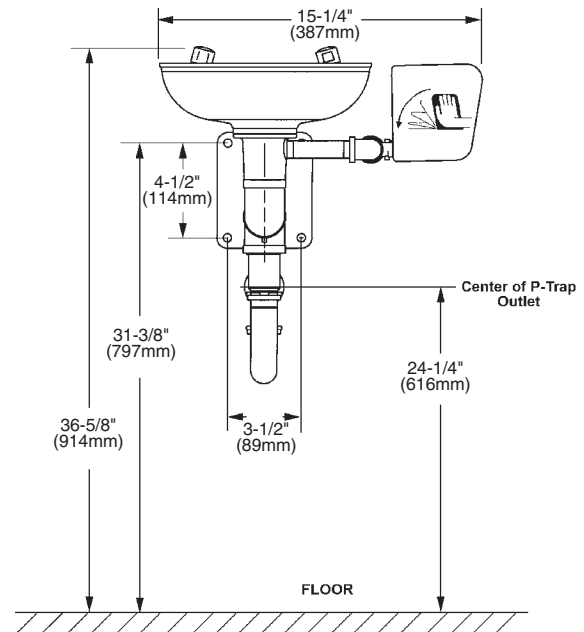
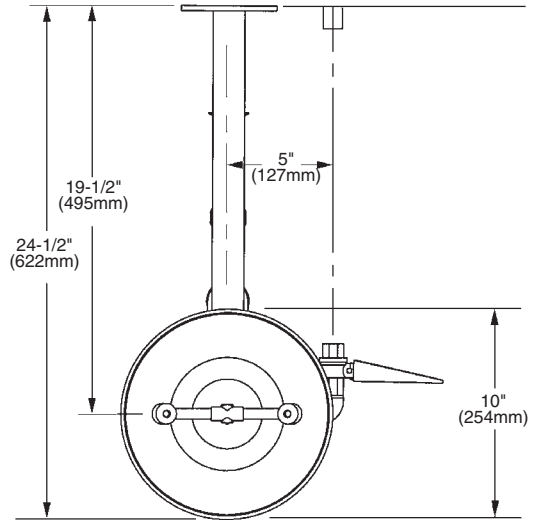
**SEI** CERTIFIED  
MODEL  
Z358.1-2004

# Wall-Mounted Eyewash Fixtures (Barrier-Free)

Model S19-220ABF

Model S19-220BBF

MODEL	
Model No.	Description
<input type="checkbox"/> S19-220ABF	Wall-Mounted Eyewash Fixture, Plastic Bowl (Barrier-Free)
<input type="checkbox"/> S19-220BBF	Wall-Mounted Eyewash Fixture, Stainless Steel Bowl (Barrier-Free)
<input type="checkbox"/> S19-2000	Navigator EFX8 – Emergency Thermostatic Mixing Valve



Document No. 4275

This information is subject to change without formal notice.  
© 2006 Bradley Corporation  
10-12-2006 (2 Pages Total)



P.O. Box 309, Menomonee Falls, WI 53052-0309  
Phone 1-800-BRADLEY FAX 262-251-5817  
Web Site: <http://www.bradleycorp.com>