

MOUNTING KITS AND ANCHORING DEVICES

CONCEALED MOUNTING KITS

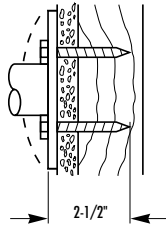
EXPOSED MOUNTING KITS

BLOCK WALL MOUNTING KITS

Stud walls with wood supports

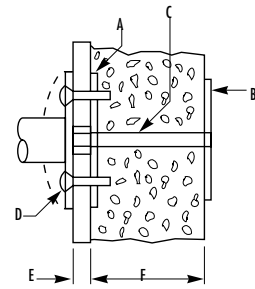
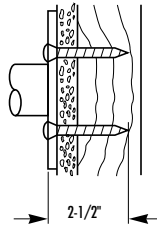
- 899-010
- MATERIAL INCLUDED
- 2 - 1/4 x 2-1/2" PLATED STEEL HEX HEAD LAG BOLTS

Bradex™

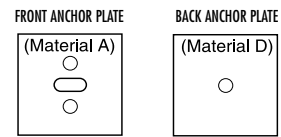


Stud walls with wood supports

- 899-020
- MATERIAL INCLUDED
- 2 - #14 x 2-1/2" STAINLESS STEEL PHILLIPS OVAL HEAD SHEET METAL SCREWS



- 899-016 (CONCEALED OR EXPOSED)



MATERIAL REQUIRED

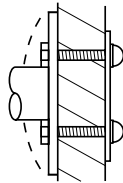
- \* A) FRONT ANCHOR PLATE 3" x 3" x 1/8" COLD ROLLED STEEL - CENTER SLOT PUNCHED AND 2 FASTENER HOLES PRE-PUNCHED.
- \* B) 2 - 1/4-20 x 1-1/4" PLATED PHILLIPS FLAT HEAD SELF-TAPPING SCREWS.
- \* C) 1 - 3/8-16 STEEL ZINC-PLATED TIE ROD WITH NUT.
- \* D) BACK ANCHOR PLATE 3" x 3" x 3/16" COLD ROLLED STEEL - TAPPED FOR AND INCLUDING 3/8-16 STUD AND NUT.
- E) FINISHED WALL THICKNESS (TO BE FURNISHED IF OVER 3/4").
- F) MASONRY WALL (THICKNESS TO BE FURNISHED).

\* INCLUDED WITH MOUNTING KIT 899-016.

Bradex™

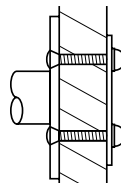
Partition walls

- 899-011
- MATERIAL INCLUDED
- A) 2 - 1/4-20 x 1-1/2" PLATED STEEL HEX HEAD MACHINE SCREWS
- B) 2 CAP NUTS
- C) 1 BACKING PLATE



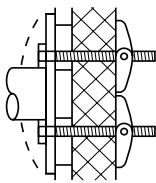
Partition walls

- 899-021
- MATERIAL INCLUDED
- A) 2 - 1/4-20 x 1-3/8" STAINLESS STEEL PHILLIPS OVAL HEAD MACHINE SCREWS
- B) 2 CAP NUTS
- C) 1 BACKING PLATE



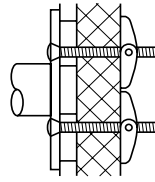
Panel walls

- 899-012
- MATERIAL INCLUDED
- A) 2 - 1/4-20 x 3" PLATED STEEL HEX HEAD MACHINE SCREWS
- B) 2 TOGGLE NUTS



Panel walls

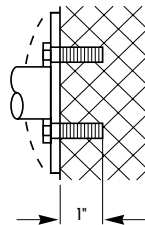
- 899-022
- MATERIAL INCLUDED
- A) 2 - 1/4-20 x 3" STAINLESS STEEL PHILLIPS OVAL HEAD MACHINE SCREWS
- B) 2 TOGGLE NUTS



Masonry walls

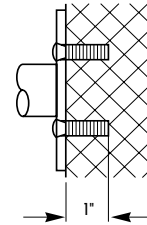
- 899-013
- MATERIAL INCLUDED
- A) 2 - 1/4-20 x 1" PLATED STEEL HEX HEAD MACHINE SCREWS
- B) 2 - 1/4-20 LEAD ANCHORS

Bradex™



Masonry walls

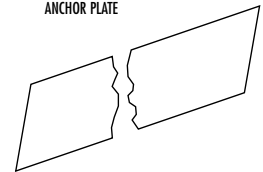
- 899-023
- MATERIAL INCLUDED
- A) 2 - 1/4-20 x 1" STAINLESS STEEL PHILLIPS OVAL HEAD MACHINE SCREWS
- B) 2 - 1/4-20 LEAD ANCHORS



IN-WALL ANCHOR PLATES

- 899-015
- x LENGTH (TO 96")
- MATERIAL
- 4" x 1/8" COLD ROLLED STEEL - LENGTH AS SPECIFIED TO 96"
- NOTE: SEPARATELY ORDER 899-014 MOUNTING KITS AS REQUIRED.

UNIVERSAL ANCHOR PLATE

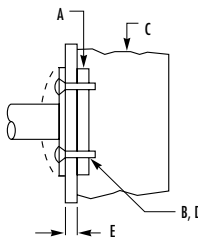


INSTALLATION:  
FASTEN TO STUDS BEFORE WALL APPLIED.  
RECESS AS REQUIRED FOR FLUSH FINISH WALL APPLICATION.  
TO ATTACH GRAB BAR, DRILL #2 (.221 DIAMETER) HOLES THRU WALLBOARD AND ANCHOR PLATE.  
ATTACH WITH 1/4-20 x 1-1/4" PLATED PHILLIPS OVAL HEAD ROLLOCK TAPPING SCREWS.

METAL STUD WALL MOUNTING KITS

- 899-014 (CONCEALED OR EXPOSED)
- MATERIAL REQUIRED
- A) IN-WALL ANCHOR PLATE 899-015 (NOT INCLUDED). SPECIFY AND ORDER SEPARATELY - SEE ANCHOR PLATES IN NEXT COLUMN.
- B) #10 SHEET METAL SCREWS (FURNISHED BY OTHERS)
- C) METAL STUD
- \* D) 2 - 1/4-20 x 1-1/4" FLAT HEAD MACHINE SCREWS.
- E) WALL DIMENSIONS (TO BE FURNISHED IF OVER 3/4").

\* INCLUDED WITH MOUNTING KIT 899-014.



Stud walls

- 899-026 (CONCEALED OR EXPOSED)
- MATERIAL INCLUDED
- 4 - #10 x 2" ZINC PLATED FLAT HEAD WOOD SCREW
- NOTE: FOR MIRROR MOUNTING ONLY. (1) PER H-HANGER

