

BradPack® Wash Center

Model 1123

- Factory Assembled
- Push-button metering valve saves water, energy
- Recesses in 4" Wall Construction
- Concealed Trap

Specifications

Materials

Wash Center is fabricated of type 304 (18-8) stainless steel with exposed surfaces in architectural satin finish. Trim is brass with heavy polished chrome plating.

Construction

Flange

22 gauge stainless steel with one-piece seamless construction, 1" wide with 1/4" return.

Trim

Vandal-resistant spout. Operating button set in front of bowl. Free running 1-1/2" bath ell with stainless steel strainer. Trap and stops complying with local codes to be supplied by plumbing contractor.

Push-Button Metering Valve

Flow of water is controlled by Handi-Tap metering valve. Operates with a light touch and delivers timed flow of water. Shuts off automatically, saving water and energy. Timed flow adjustable from 5 to 60 seconds. Vernatherm thermostatic mixing valve provides tempered water. Tamper-resistant mixer is factory set at comfortable 105° washing temperature. Operation unaffected by variations in pressure of either hot or cold water supply.

Apron

22 gauge stainless steel. Spot welded to cabinet and underside of bowl.

Access Panel and Underbowl Cover

18 gauge stainless steel. Access panel and underbowl cover secured by vandal-resistant screws.

Check Your Surroundings

Certain factors, such as intense direct sunlight, other infrared devices, or other site conditions may interfere with the activation of infrared faucets. Contact your local Bradley representative to discuss any application concerns.

Installation

Requires rough wall opening 15-1/2" W x 26" H x 4" D. Top of opening is 39-1/2" above finished floor. (Detailed installation instructions included with each shipment.)



Document No. 6110

This information is subject to change without formal notice.
© 2003 Bradley Corporation
11-3-2003 (3 Pages Total)

Bradley 

P.O. Box 309, Menomonee Falls, WI 53052-0309
Phone 1-800-BRADLEY FAX 262-251-5817
<http://www.bradleycorp.com>
Technical Information Fax Service: 1-800-BRADFAX

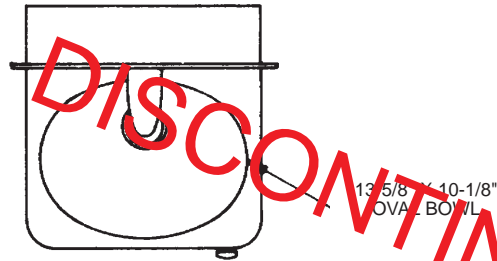
BradPack® Wash Center

Model 1123

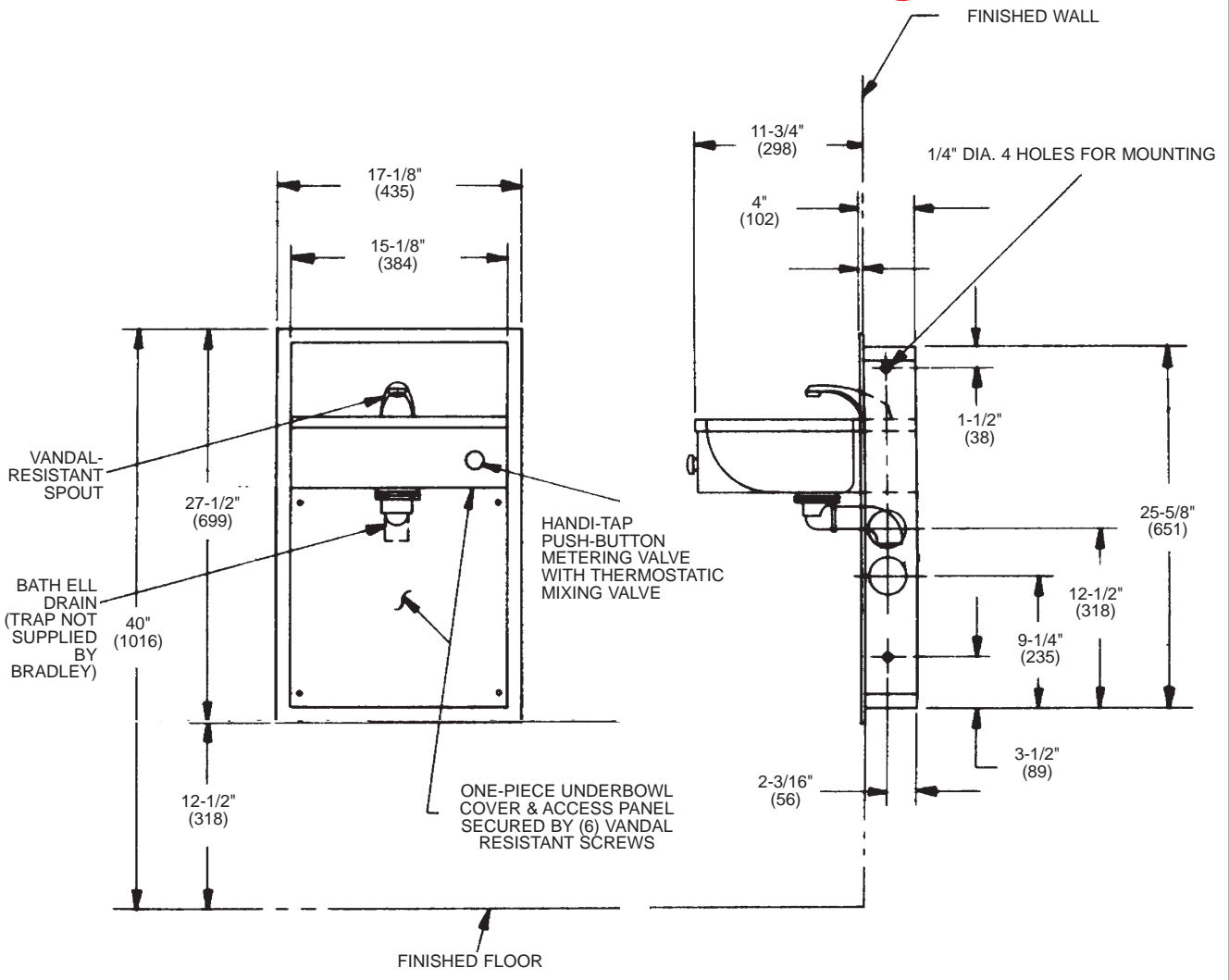
PLUMBING FIXTURES TECHNICAL DATA

Dimensions in parentheses are millimeters.

TOP VIEW



DISCONTINUED



Bradley Corporation reserves the right to make changes in design and material without formal notice and without incurring obligation. Verify all rough-in dimensions prior to installation.

BradPack® Wash Center

Model 1123

MODEL	
Model	Description
<input type="checkbox"/> 1123	BradPack Wash Center

OPTIONAL SELECTIONS	
Controls:	
<input type="checkbox"/> W	90-75 Metering Faucet w/thermostatic mixing valve; stop, strainer, and check valves.
<input type="checkbox"/> H	Futura Faucet 900. Includes: Accu-Zone infrared metering control; thermostatic mixing valve; stop, strainer, and check valves.
<input type="checkbox"/> 8	Pop-up drain and overflow assembly.
Soap Dispenser:	
<input type="checkbox"/> 5	Deck-mounted liquid soap dispenser, 40 oz.
Installation:	
<input type="checkbox"/> A	Surface-mounting collar (4"), factory installed
<input type="checkbox"/> B	Semi-recessed collar for 2" recess, factory installed
<input type="checkbox"/> N	In-wall mounting frame

Sample Specification

Preassembled wash center shall be Bradley BradPack Model 1123. UL listed wash center shall be one-piece unit designed for recessed installation and shall permit convenient use of lavatory by both able-bodied and wheelchair users and shall include the following standard equipment:

- lavatory with Handi-Tap push-button metering valve and thermostatic mixing valve
- tamper resistant mixer is set at comfortable 105°F washing temperature.

Unit shall be fabricated of type 304 (18-8), 22 gauge stainless steel and 18 gauge bowl with exposed surfaces in architectural satin finish. Overall dimensions: 17-1/8"W x 27-1/2"H with 11-3/4" projection from finished wall surface. Trap and stops complying with local codes to be furnished by plumbing contractor.

Unit is designed to conform to requirements of ASHRAE 90A - 1980.

DISCONTINUED

Document No. 6110

This information is subject to change without formal notice.
11-3-2003 (3 Pages Total)



P.O. Box 309, Menomonee Falls, WI 53052-0309
Phone 1-800-BRADLEY FAX 262-251-5817
<http://www.bradleycorp.com>
Technical Information Fax Service: 1-800-BRADFAX