

LAV6580

Chase Mounted 5-Sided Stainless Steel Lav

- Sturdy cabinet with fully enclosed bottom
- Prepunched hot and cold pushbutton holes in cabinet for standard options
- All units factory tested for proper operation

Specifications

Materials

All Cabinet materials, including interior piping are Type 304 stainless steel. The fixture is made from heavy gauge stainless steel with seamless welded surfaces.

Construction

Cabinet

All welded construction with exposed welds ground smooth, and all accessible seams and voids eliminated. Bottom of lavatory cabinet is fully enclosed with a seamless welded plate. Backsplash panel has openings punched for fittings.

Lavatory

Die-drawn lavatory has multiple hole fast drain with air vent. Self-draining soap dishes formed into countertop. Lavatory bowl measures 13-1/4" x 10" x 5" deep. Lavatory waste must be chosen from selection list. Valve options include self-closing, pneumatic metering, and electric metering valves.

Finish

All exposed stainless steel surfaces have a bead blast finish (optional #4 polished satin finish.)

Wall Anchoring

No exposed mounting fasteners in cell area—fixture is completely secured from pipe chase side, with rust-resistant mounting hardware for walls up to 12" thick.

NOTE: Fixture requires wall openings and accessible chase for installation and maintenance. Some field assembly may be required.

Standard Equipment

Unitized stainless steel cabinet/lavatory with integral fast drain and rust-resistant mounting hardware for walls up to 12" thick.



Model LAV6580

Sample Specification

Stainless steel lavatory shall be Bradley Model 6580. Fixture shall be fabricated of Type 304 stainless steel with exposed surfaces to have a bead blast finish (optional #4 polished satin finish.) All exposed welds shall be ground smooth. Visible voids, seams, or crevices will not be accepted. (Select trim from standard or optional equipment sections, as appropriate.)

Dimensions are shown on Page 3.

Document No. 7065

This information is subject to change without formal notice.
0203BLJV (3 Pages Total)



P.O. Box 309, Menomonee Falls, WI 53052-0309
Phone 1-800-BRADLEY FAX 262-251-5817
<http://www.bradleycorp.com>
Technical Information Fax Service: 1-800-BRADFAX

LAV6580

Chase Mounted 5-Sided Stainless Steel Lav

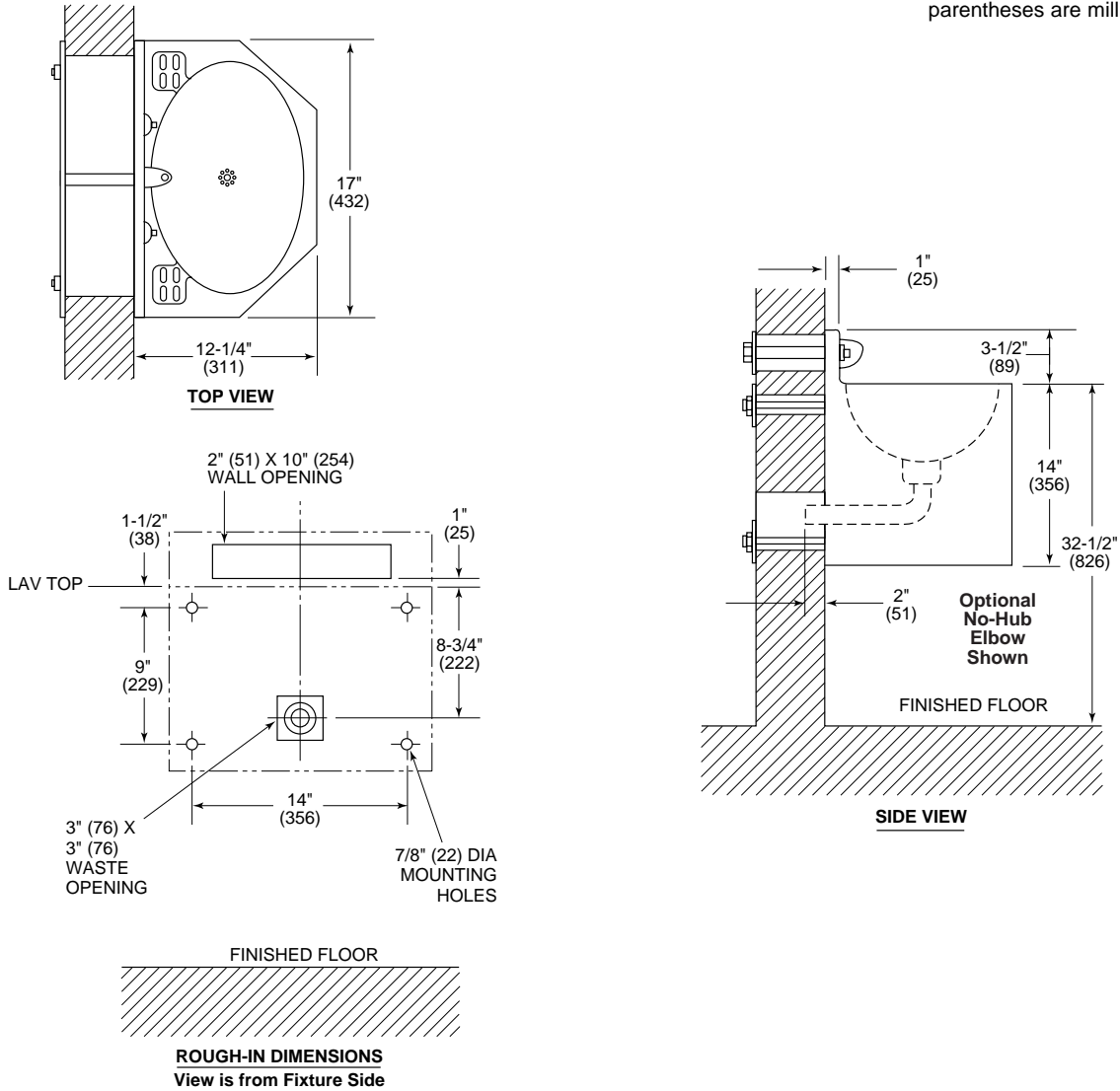
MODELS
Model <input type="checkbox"/> LAV6580

STANDARD SELECTIONS
<u>Must select one</u>
Finish: <input type="checkbox"/> BB Bead Blast (Standard) <input type="checkbox"/> PS Polished Stainless Steel
Wall Thickness: (Select One) <input type="checkbox"/> 0-4 0-4" Wall Thickness <input type="checkbox"/> 4-8 4-8" Wall Thickness <input type="checkbox"/> 8-12 8-12" Wall Thickness
Valve: (Select either a Filler or Other Configuration) <input type="checkbox"/> ASTS Air Single Temp Self-Closing Valve <input type="checkbox"/> ADTS Air Duel Temp Self-Closing Valve <input type="checkbox"/> ASTM Air Single Temp Metering Valve <input type="checkbox"/> ADTM Air Duel Temp Metering Valve <input type="checkbox"/> TTST Touch Time™ Single Temp Electronic Metering Valve <input type="checkbox"/> TTDT Touch Time™ Duel Temp Electronic Metering Valve <input type="checkbox"/> NV No Valving
Filler/Bubbler: (Select one) <input type="checkbox"/> PF Penal Filler <input type="checkbox"/> CF Code Filler <input type="checkbox"/> NF No Filler
Lavatory Wastes: <input type="checkbox"/> EW-NH Elbow Waste - No Hub (Std) <input type="checkbox"/> PT-NH P-Trap - No Hub <input type="checkbox"/> 1 1/4EW-C 1-1/4" Elbow Waste - Coupling <input type="checkbox"/> 1 1/2EW-C 1-1/2" Elbow Waste - Coupling <input type="checkbox"/> 1 1/4PT-C 1-1/4" P-Trap - Coupling <input type="checkbox"/> 1 1/2PT-C 1-1/2" P-Trap - Coupling

OPTIONAL SELECTIONS
In Chase Lavatory Waste Accessories: <input type="checkbox"/> 1 1/4PN 1-1/4" P-Trap - No Hub <input type="checkbox"/> 1 1/2PN 1-1/2" P-Trap - No Hub <input type="checkbox"/> 1 1/4PC 1-1/4" P-Trap - Coupling <input type="checkbox"/> 1 1/2PC 1-1/2" P-Trap - Coupling <input type="checkbox"/> 1 1/4ON 1-1/4" Clean-Out - No-Hub <input type="checkbox"/> 1 1/2ON 1-1/2" Clean-Out - No-Hub <input type="checkbox"/> 1 1/4OC 1-1/4" Clean-Out - Coupling <input type="checkbox"/> 1 1/2OC 1-1/2" Clean-Out - Coupling
Lav Water Supply: <input type="checkbox"/> TMA Thermostatic Mixing Supply

Bradley Corporation reserves the right to make changes in design and material without formal notice and without incurring obligation. Verify all rough-in dimensions prior to installation.

Dimensions shown in parentheses are millimeters.



Document No. 7065

This information is subject to change without formal notice.
0203BLJV (3 pages Total)



P.O. Box 309, Menomonee Falls, WI 53052-0309
Phone 1-800-BRADLEY FAX 262-251-5817
<http://www.bradleycorp.com>
Technical Information Fax Service: 1-800-BRADFAX