

Shower Accessories

Bradtrrol Mixing Valve (suffix BV)

Operation

The Bradtrrol Mixing Valve enables bather to select desired temperature and volume settings with a single handle. No need for a separate volume control at valve or showerhead. The handle is pulled out for increased volume; turned left for hot, right for cold.

Bradtrrol's operating cam moves within a rubber sleeve. It's permanently lubricated and never comes in contact with water. This exclusive feature allows the Bradtrrol valve to operate trouble-free in hard water areas. Should Bradtrrol valves require maintenance, the operating parts are replaceable as a cartridge unit. Bradtrrol valves are available on all types of Bradley showers.

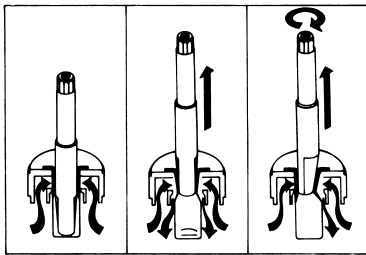
Materials

The operating cartridge is precision-molded of corrosion-resistant Celcon. The sleeve is constructed of Nordel rubber, a material which has extremely low-temperature sensitivity and does not expand in the presence of hot water. All exposed surfaces are chrome plated or finished with No. 4 stainless steel.

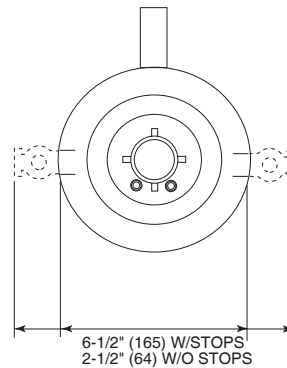
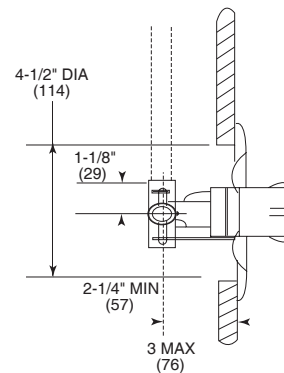
Bradtrrol Mixing Valve



Bradtrrol Valve with/without
Stops
(1C-BV-IS/1C-BV)



OFF fully inserted cam securely seals rubber sleeve against both hot and cold supply ports.
ON mix position. Withdrawing cam permits sleeve to flex away from ports and allows water to flow.
ON single temperature. Turning cam aligns bevel with one port, flat side with other, resulting in one supply flowing and the other sealed.



Bradtrrol Mixing Valve



Column Mounted



Panel on Mounted

Document No. 5410

This information is subject to change without formal notice.
 © 2005 Bradley Corporation
 10-11-2005 (1 Page Total)

Bradley

P.O. Box 309, Menomonee Falls, WI 53052-0309
 Phone 1-800-BRADLEY FAX 262-251-5817
<http://www.bradleycorp.com>