

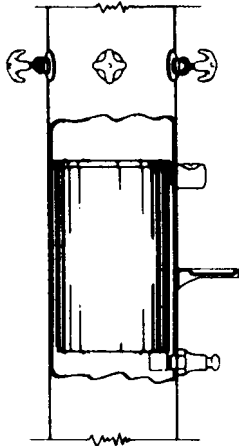
Shower Accessories

Soap System

Container-Type Soap Systems with Standard Liquid Soap Valve (suffix CS)

All types of Bradley preassembled shower equipment can be furnished with built-in soap containers. Soap tank has one-gallon capacity. Chrome-plated fill opening has vandal-proof plug. Pump-type valve dispenses metered amount of liquid soap at each stroke. Integral check prevents leakage — can't be held in the open position. Chrome-plated brass and stainless steel construction. Overall projection is 3-9/16". Bottom mounted on 2W and 3W.

Column showers have one soap valve for each shower position unless otherwise specified; multi-station, wall-mounted preassembled showers (Panelon, Wall-Saver, Econo-Wall) have a soap valve accessible to each user — generally located between shower stations.



Liquid Soap Valve

Recessed Soap Dish (suffix RSD)

Fabricated of type 304 stainless steel with seamless corners and burr-free edges. Overall: 7-1/8" Wx5-1/16" Hx2-3/4" D. Wall opening 6-1/4" Wx4-1/4" Hx2-3/4".



Standard Soap Dish (suffix SD)

Cake soap tray is formed from heavy-gauge stainless steel with satin finish. Three holes in bottom of tray. 1/4" x 1-1/4" Allen head machine screws furnished for mounting.



Document No. 5332

This information is subject to change without formal notice.
1201BLNK (1 Page Total)

Bradley 

P.O. Box 309, Menomonee Falls, WI 53052-0309
Phone FAX 262-251-5817
<http://www.bradleycorp.com>
Technical Information Fax Service: 1-800-BRADFAX