



# Restroom Partitions Overview

## Styles

### Sentinel™ Overhead-Braced – Series 400

This style provides the most economical solution for heavy traffic and vandalism-prone areas. Because it requires no special floor or ceiling construction, installation is easy in new or old buildings. The anti-grip headrail provides outstanding rigidity.



### Floor-Braced – Series 500

This style complements design with functional performance. Recommended for buildings with high ceilings, it enhances the effect of spaciousness. A minimum 3" concrete construction for anchoring is required.



### Ceiling-Hung – Series 600

This style is ideal for areas with low ceilings. Offering an area free from obstruction to allow for fast and easy maintenance, the system requires structural supports in the ceiling for maximum rigidity. Not recommended for ceiling heights over 8 feet.



### Floor-to-Ceiling – Series 700

This style is mounted to the floor and ceiling and is recommended where additional stability is desired.

## Materials

### Powder Coated

Constructed of 22 gauge galvanized steel, which is cleaned, finished and oven cured to provide a mar-resistant finish. Patented Permaseal™ seamless design features unitized construction, which provides superior panel integrity against water penetration to stop panels rusting from the inside.

### Stainless Steel

Constructed of 20 gauge, 300 Series stainless steel. Unique Permaseal™ seamless design features unitized construction, which provides superior panel integrity against water penetration to stop panels rusting from the inside.

### Solid Core Phenolic

Constructed of solid phenolic core with a high-pressure decorative matte surface finish as an integral part of the core material.

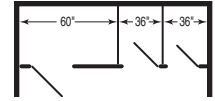
### Bradmar Solid Plastic

Constructed from an advanced formula of 1" thick high density polyethylene (HDPE). Available in 21 popular colors.

## Types of Layouts

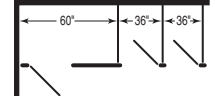
### Between-Wall

Refers to a compartment or compartments located between two walls. Shown as BW3 with one 60" compartment and two standard 36" compartments.



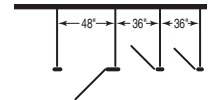
### Open-End (In-Corner)

Refers to compartment or compartments that will be affixed laterally to only one wall. Shown as OE3 with one 60" compartment and two standard 36" compartments.



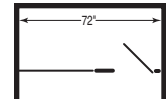
### Free-Standing

Refers to layouts where the compartments will be located without being affixed to lateral walls. Shown as FS3 with one 48" compartment and two standard 36" compartments.



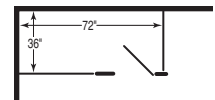
### Alcove

Refers to the specific layout where the single compartment will be attached to either two walls or one wall and the end of a run of compartments. Shown as AL72".



### In-Corner Alcove

Refers to the specific layout where the single alcove compartment will be in a corner and require an end panel. Shown as an AL72" with an additional 36" panel.



## Budget Pricing

The following charts illustrate the relative pricing of various types of partitions.

Material	Relative Price
Powder Coated	Economy
Phenolic	Mid-Range
Solid Plastic (HDPE)	Mid-Range
Stainless Steel	Premium

Series	Relative Price
400	Economy
500	Mid-Range
600	Premium
700	Premium – Plus

Verify all rough-in dimensions prior to installation.

Consult local and national codes. Conformity and compliance to local and national codes is the responsibility of the installer.

Page 1 of 1 7/1/2014

This information is subject to change without notice.

Bradley\_Partitions\_Overview

© 2015 Bradley  
P.O. Box 309, Menomonee Falls, WI 53052-0309  
800 BRADLEY (800 272 3539) +1 262 251 6000  
bradleycorp.com