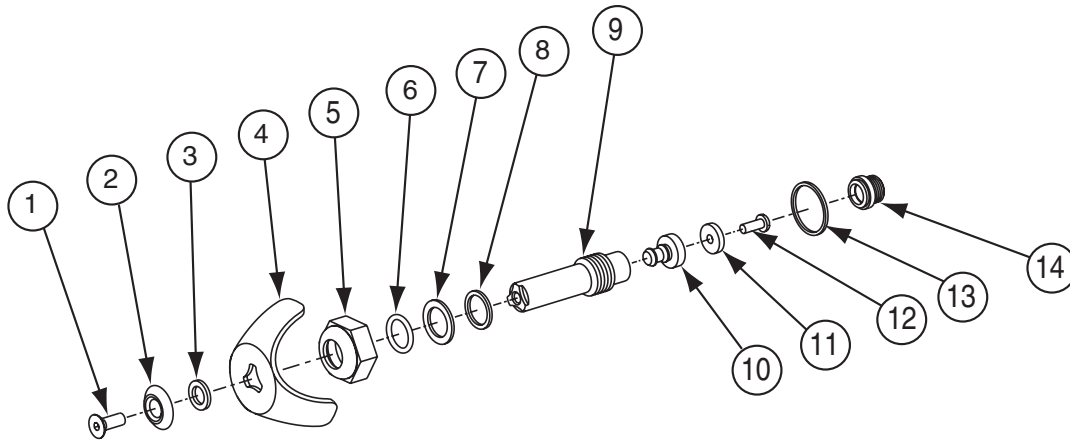


Compression Valve, Current Style — Hot, Cold or Tempered

For Individual, Econo-Walls, Wall Savers, Panelons and Column Showers



Parts List

Item	Part No.	Description	Assembly S02-031	Valve Stem Assembly S21-020	Valve Stem Extension S21-021	Repair Parts Kit S45-048A
			Qty			
1	160-145	Screw	1	—	—	—
2	142-027	Index Washer (White)	1	—	—	—
2	142-027A	Index Washer (Blue)	1	—	—	—
2	142-027B	Index Washer (Red)	1	—	—	—
3	142-002BL	Insert Washer	1	—	—	—
4	128-028	Handle	1	—	—	—
5	121-012	Bonnet	1	—	—	—
6	125-001BC	O-Ring	1	—	—	1
7	124-001BD	Fiber Washer	1	—	—	1
8	142-002BF	Brass Washer	1	—	—	—
9	119-052	Valve Stem	1	1	—	—
10	120-017	Valve Stem Extension	1	1	1	1
11	125-001L	Bibb washer	1	1	1	1
12	160-245	Screw	1	1	1	1
13	124-001K	Fiber Washer for Valve Body	—	—	—	1
*14	117-002	Valve Seat - H & C	—	—	—	1

NOTE: It is not recommended that the component of the stem assemblies be ordered individually. It is likely that valve stem extension can not be removed without breaking as it is made of Celcon plastic. If breakage occurs, that portion of the plastic remaining in valve stem no. 119-052 will have to be drilled out. It is our recommendation that valve stem assembly no. S21-020 always be replaced complete.

Used in Conjunction With the Following Existing Parts:

118-009 Valve Body
150-004 Escutcheon, Columns
150-035 Escutcheon, Wall Savers, Panelons

* Use 3/8" Allen Wrench to remove valve seat

NOTE: Older style columns may require a special bushing for the seat: 153-126

S02-031 Complete valve stem and handle assembly with White Index Washer (Tempered).

S02-031A Complete valve stem and handle assembly with Blue Index Washer (Cold).

S02-031B Complete valve stem and handle assembly with Red Index Washer (Hot)

Compression Valve, Current Style — Hot, Cold or Tempered

How They Work:

Counter-clockwise rotation of the handle and valve stem causes the bibb washer to move away from the valve seat allowing water to flow through the valve seat.

Troubleshooting		
<i>Problem -----</i>	<i>Cause -----</i>	<i>Solution -----</i>
Water drips from shower head	Worn bibb washer	Replace bibb washer
	Mineral or foreign material build up on valve seat	Clean or replace valve seat
Water drips from handle or bonnet	O-Ring worn or bonnet insufficiently tightened	Replace O-Ring or tighten bonnet
Water will not shut off	Bibb washer retaining screw worked loose resulting in washer not seating properly	Tighten or replace washer retaining screw