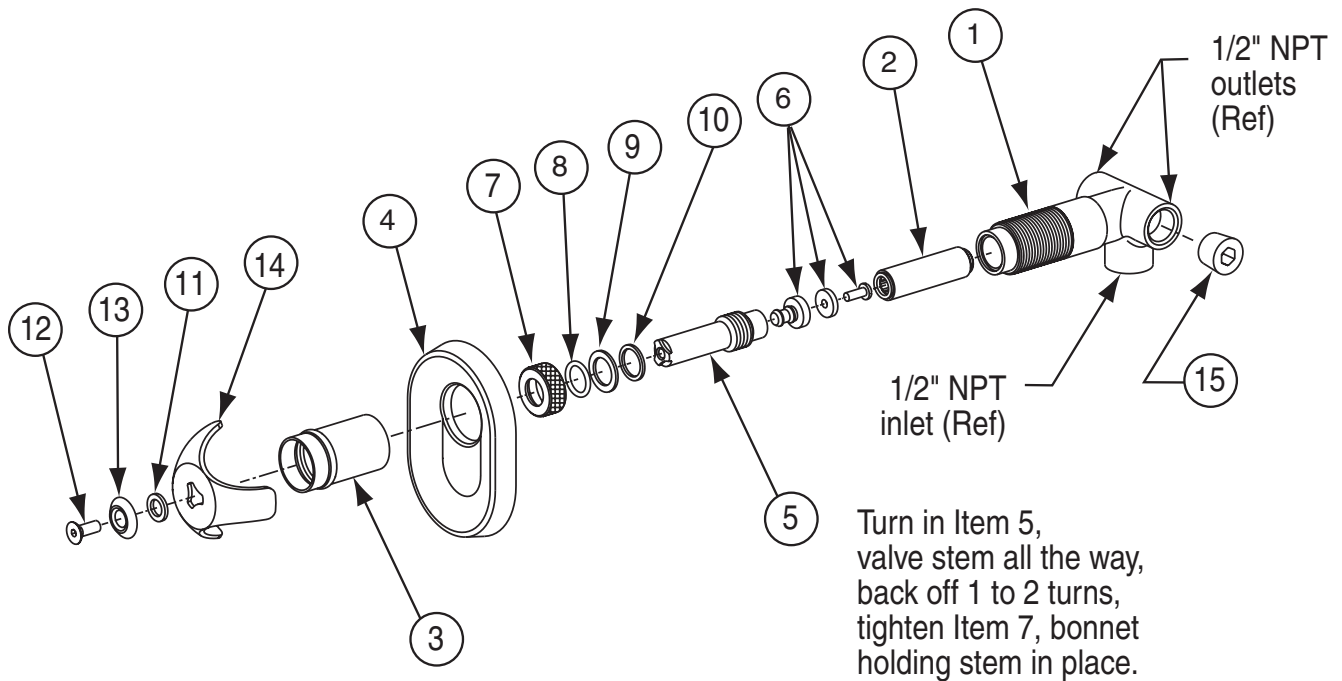


### 1C Single Compression Valve

For Built-In, Concealed Supply Application



### Parts List

Item	Part No.	Description	Assembly S67-379	Valve Stem Assembly S21-020
			Qty	
1	118-146A	Mix Chamber	1	—
2	117-034	Valve Seat	1	—
3	113-430	Escutcheon Sleeve H & C	1	—
4	150-110	Escutcheon	1	—
5	119-052	Valve Stem - H & C	1	1
6	S21-021	Valve Stem Ext Comp	1	1
7	121-019	Bonnet	1	—
8	125-001BC	O-Ring .818" OD	1	—
9	124-001BD	Flat Washer .641 x .938 x .063	1	—
10	142-002BF	Flat Washer .641 x .813 x .063	1	—
11	142-002BL	Washer .391 x .625 x .078	1	—
12	160-145	Screw 1/4-28 x 1/2 FL	1	—
13	142-027	Washer - Index - White	1	—
14	128-057	Handle - Polished	1	—
15	169-168	Pipe Plug - 1/2" Brass	1	—

**NOTE:** It is not recommended that the component of the stem assemblies be ordered individually. It is likely that valve stem extension can not be removed without breaking as it is made of Celcon plastic. If breakage occurs, that portion of the plastic remaining in valve stem no. 119-052 will have to be drilled out. It is our recommendation that valve stem assembly no. S21-020 always be replaced complete.

**1C Single Compression Valve**

*How they Work:*

Counter-clockwise rotation of the handle and valve stem causes the bibb washer to move away from the valve seat allowing water to flow through the valve seat.

<b>Troubleshooting</b>		
<i>Problem</i> -----	<i>Cause</i> -----	<i>Solution</i>
Water drips from shower head	Worn bibb washer	Replace bibb washer
	Mineral or foreign material build up on valve seat	Clean or replace valve seat
Water drips from handle or bonnet	O-Ring worn or bonnet insufficiently tightened	Replace O-Ring or tighten bonnet
Water will not shut off	Bibb washer retaining screw worked loose resulting in washer not seating properly	Tighten or replace washer retaining screw