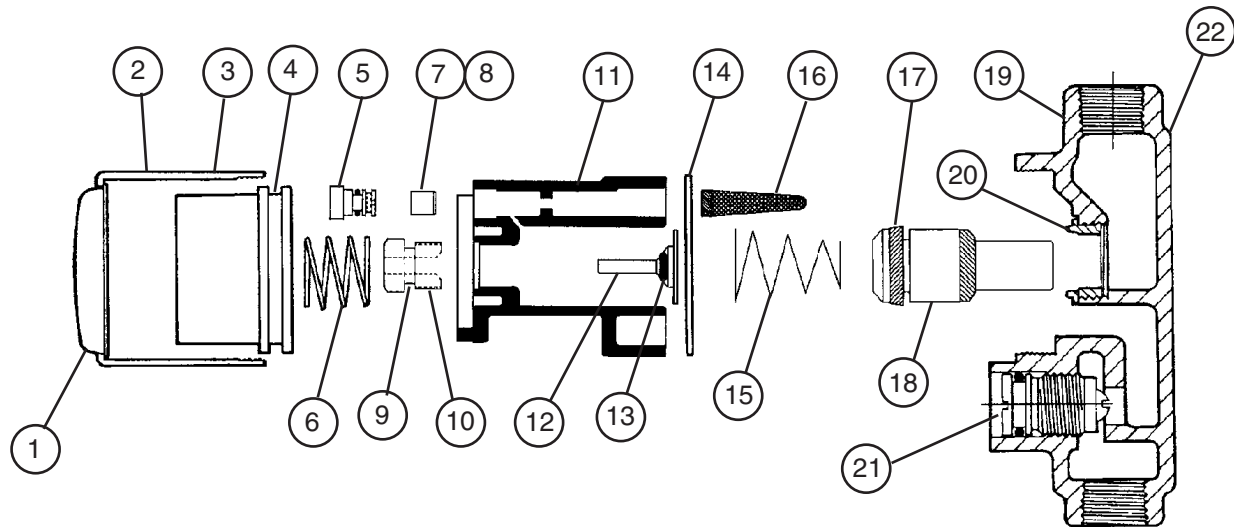


Touch 'N Flo Shower Valve, Current Version

For Individual, Econo-Walls, Wall Savers, Panelons and Column Showers



*** Note:**

Item #10 includes 125-001BF O-Ring

Item #12 includes 125-001EF O-Ring

Item #18 includes 125-049 Cup Washer

May consider plunger assembly S64-087 if extreme low water pressure condition exists.

NOTE: Lubricate "U" cup (Item 17) on plunger with Parker "O" Lube (S45-125). Apply thin coat all around I.D. - 1" deep. Do not use spray silicone or petroleum based lubricants on components.

Escutcheon & Screws (Not Shown) must be ordered separately as follows:

- | | |
|---------|-------------------------------------|
| 150-033 | Escutcheon 6-Person Column Shower |
| 150-031 | Escutcheon 2-5 Person Column Shower |
| 160-165 | Escutcheon Screw — 1 required |
| 150-077 | Escutcheon for all other Showers |
| 160-255 | Escutcheon Screw — 2 required |
| 159-107 | Wall Plate for Individual Shower |
| 160-290 | Wall Plate Screw — 2 required |

Touch 'N Flo Shower Valve Parts List, Current Version

| Item | Part No. | Description | Assembly | Complete Valve Kit • S45-320 | Body Assembly Kit S73-019S | Repair Kit S65-071 | Repair Kit S65-070 |
|------|-----------|----------------------------------|----------|------------------------------|----------------------------|--------------------|--------------------|
| | | | Qty | | | | |
| 1 | 128-048 | Push Button | 1 | 1 | — | — | — |
| 2 | 107-243 | Cover 1-5/8" Long | 1 | 1 | — | — | — |
| 3 | 107-253 | Cover (Indiv. Only) 2-3/4" Long | 1 | — | — | — | — |
| 4 | 182-065 | Spacer (Indiv. Only) | 1 | — | — | — | — |
| 5 | S21-032 | Screw Assembly | 1 | 1** | 1** | 1** | — |
| 6 | 135-034 | Spring | 1 | 1 | — | — | — |
| 7 | S88-039 | Standard Fixed Orifice Assembly | 1 | 1** | 1** | 1** | 1 |
| 8 | S88-039C | Longer Cycle Orifice Assembly | 1 | — | — | — | — |
| 9 | 125-001BF | O-Ring | 1 | — | — | — | — |
| 10 | S68-005* | Guide | 1 | 1** | 1** | 1** | — |
| 11 | 118-210 | Body | 1 | 1** | 1** | 1** | — |
| 12 | S64-034* | Poppet Assembly | 1 | 1 | 1 | 1 | — |
| 13 | 125-001EF | O-Ring | 1 | — | — | — | 1 |
| 14 | 169-250 | Gasket | 1 | — | — | — | 1 |
| 15 | 135-028 | Conical Spring | 1 | 1 | — | 1 | 1 |
| 16 | 173-012 | Filter | 1 | 1** | 1** | 1** | 1 |
| 17 | 125-078 | U-Cup (Viton,Brown) | 1 | — | — | — | — |
| 18 | S64-088 | Plunger Assembly | 1 | 1 | — | 1 | 1 |
| 19 | 118-121 | Bottom Body | 1 | — | — | — | — |
| 20 | 117-030 | Seat (Assemble with Teflon Dope) | 1 | — | — | — | — |
| 21 | S27-070 | Internal Stop Core | 1 | — | — | — | — |
| 22 | S27-180* | Bottom Body Assembly | — | — | — | — | — |
| | S45-125 | Parker "O" Lube | 1 | — | 1 | 1 | 1 |
| | 215-717 | Instruction Sheet | — | 1 | — | — | — |

NOTE: Lubricate "U" cup (Item 17) on plunger with Parker "O" Lube (S45-125). Apply thin coat all around I.D. - 1" deep. Do not use spray silicone or petroleum based lubricants on components.

NOTE: • Repair kit S45-320 applies to the "Short Cover" valve version only.
•• These components part of assembly S73-046.

Touch 'N Flo Shower Valve, Current Version

For Individual, Econo-Walls, Wall Savers, Panelons and Column Showers

Note: Refer to Illustration and parts list on previous pages.

Valve Timing

Note: Current style valve is supplied with Fixed Orifice Timing Assembly. There is no need to adjust this valve for timing. If previous version style of adjustable orifice is desired, parts are available. Consult factory.

Current valve furnished from March of 1988 is equipped with fixed timing orifice assembly (S88-039). This will time the valve to approximately 25 to 45 seconds. If a shorter cycle is desired, use S88-039A, or if longer cycle is desired, use S88-039C. If servicing previous version of valve with adjustable timing orifice, follow instructions below. It would be desirable, however, to replace both orifice and O-Ring in valve body with Fixed Orifice Assembly.

1. Remove escutcheon.
2. Remove cover (Items 2 or 3).

Note: The pushbutton, and spring will also come loose with the cover.

3. Check present timing by depressing poppet (Item 12). Measure the time from poppet release to valve shutoff.

4. Changing timing:

- A. Insert 3/32" Allen Key into screw (Item 5).
- B. Turn clockwise to lengthen time valve is open.
- C. Turn counterclockwise to shorten time valve is open.
- D. Recheck timing by as indicated in Step 3, continuing adjustment until desired timing is reached.

Note: A short turn will change timing considerably when setting valve in excess of 45 seconds.

5. Replace cover and related parts.
6. Retest timing by depressing push button (Item 1). If timing is significantly different than in Step 4D, repeat Step 2 or follow note above referring to Fixed Orifice Assembly.

If Valve Will Not Shut Off

1. Remove escutcheon.
2. Remove cover (Items 2 or 3).

Note: The pushbutton, and spring will also come loose with the cover.

3. Using a 3/32" Allen Key, turn adjusting screw (Item 5) counterclockwise until adjusting screw is flush with body (Item 11). If valve continues to run, proceed with the next step.
4. Turn integral stop (Item 21) to shut off water, remove body assembly (Item 11) and check for:
 - A. A loose or worn valve seat (Item 20).
 - B. Any obstruction between seat and plunger assembly.
 - C. Loose, missing or plugged filter (Item 16), in body assembly. If either condition exists, replace entire body assembly (S73-019S).

Touch 'N Flo Valve Service Procedures Continued...

- D. Missing plunger assembly (Item 18). Conical washer worn on not centered on plunger assembly.
Replace if either condition exists.
 - E. Reassemble valve body assembly S73-019S and turn water on.
 - F. If valve still continues to run, proceed with Step 5.
5. Shut off water to shower, remove integral stop (Item 21), and check if bibb washer and screw have become disassembled and have remained in passageway or if any other foreign matter may be obstructing water flow. If integral stop core is defective, replace with a new unit, reassemble and test.

If Valve Will Not Turn On

1. Check if all stops are open.
2. Integral stop washer may have slipped off retaining screw, allowing it to obstruct passageway.
Remove washer and replace integral stop (Item 21) with new unit.
3. Poppet guide (Item 10) may be screwed into body (Item 11) too tightly, this applies to older versions only.
On current style, seal is made from poppet guide O-Ring 125-001BF to body, and poppet assembly to guide with 125-001DB O-Ring integral to poppet.
4. Conical piston spring (Item 15) may be in upside down. Narrow end of spring should engage the piston.

If Valve Timing is Unstable at Cycles In Excess of One Minute

1. Make certain to depress pushbutton (Item1) and hold for one second to test cycle.
2. Listen to shower for evidence of strong flowing fluctuations. If these exist when other showerheads are used, check building supply stops for full open, check if strainers are clean and tempering valves are on.
3. If timing drifts steadily longer or shorter, check to see what style of orifice is used (see note on previous page regarding type of orifice utilized). If adjustable orifice is used, it is advisable to select a fixed orifice assembly. If using a fixed orifice, remove and hold up to light to see if passageway is clear for small amount of water to pass. Replace in cavity with O-Ring side first.