

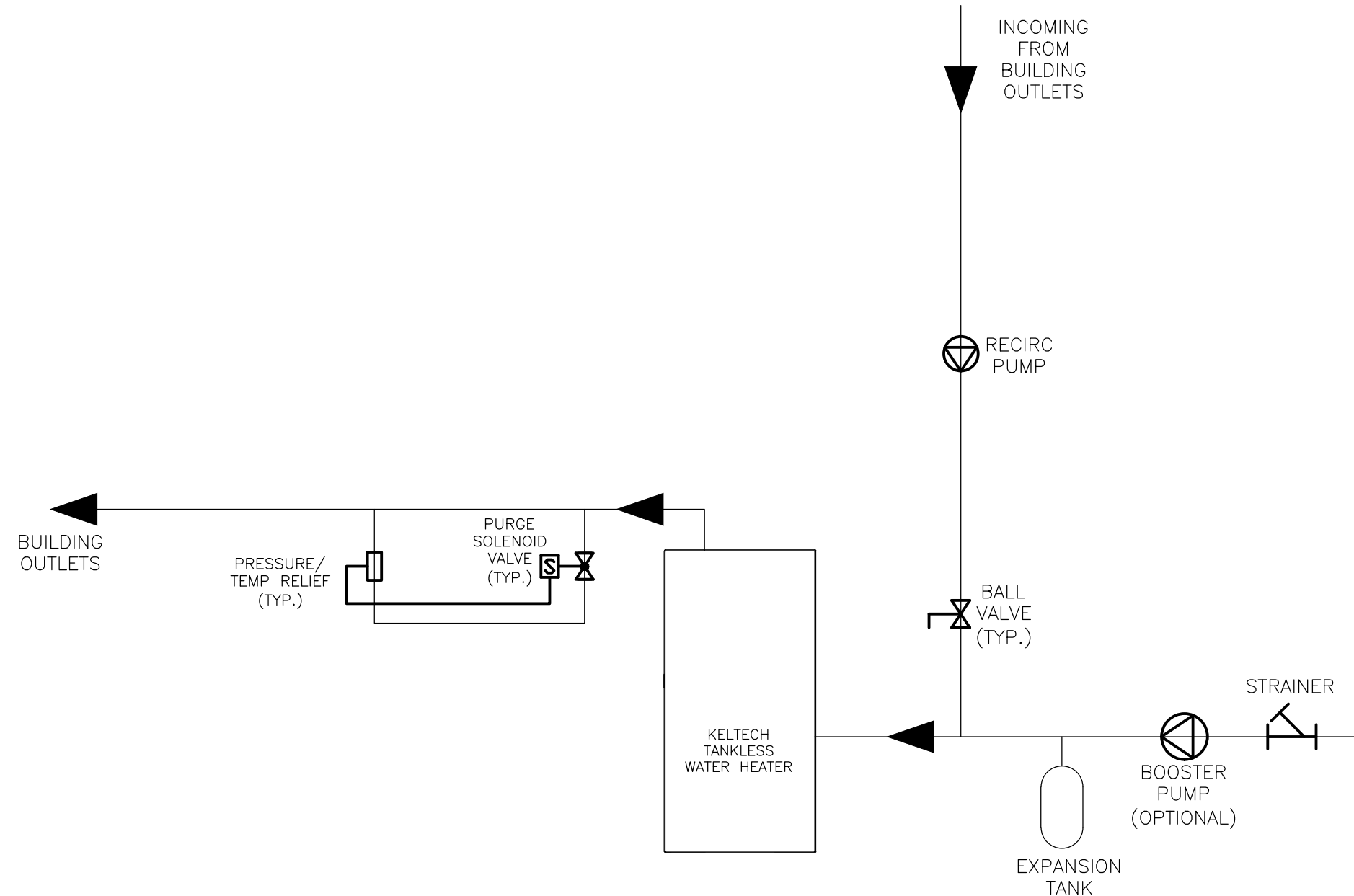
THIS DIAGRAM IS ONLY A SUGGESTED PLUMBING SCHEMATIC AND MAY NOT INCLUDE ALL STATE/LOCAL CODE REQUIRED EQUIPMENT, VALVE, ETC.

THE RECIRC PUMP CAN BE CONTROLLED BY TEMPERATURE (AQUASTAT), TIMER, OR OCCUPANCY SENSOR TO MAINTAIN LOOP AT USAGE TEMPERATURE.

ALL EQUIPMENT AND PIPING SHALL BE SIZED BY CONSULTANT/ENGINEER.

ANY QUESTIONS REGARDING THE KELTECH HEATER, HOW IT CAN BE UTILIZED, OR CHANGES TO THE SYSTEM SHOULD BE SENT TO BRADLEY CORP. ATTN: NICK GREENE

INSTANTANEOUS WATER HEATER SYSTEM. EXPANSION TANK IS TYPICALLY INSTALLED ON THE COLD WATER INLET BUT CAN BE INSTALLED ON THE HOT WATER SUPPLY AFTER THE WATER HEATER. THE USE OF THE STRAINER IS HIGHLY RECOMMENDED. THE PURGE AND PRESSURE/TEMP RELIEF VALVE ARE TYPICALLY USED WHEN THE BUILDING OUTLETS ARE SAFETY FIXTURES. TYPICAL BUILDING RECIRC SYSTEM WITH PUMP.



- TYPICAL WATER HEATER SYSTEM
- OPTION FOR RECIRC SYSTEM

DATE	REV	DESCRIPTION	ECN	BY
<b>Bradley</b>				
This print contains information that is PROPRIETARY. Disclosure of any information on this document cannot be made without written permission of Bradley Corporation.				
TOLERANCES UNLESS OTHERWISE SPECIFIED			DRAWN BY:	NJG
			DATE:	10/22/14
			SCALE:	NTS
			FIRST USED:	
			REF:	
MATERIAL:		XXXXXXXXXX		
NAME:		XXXXXX XXXXXX		
DWG NUMBER:				SHEET
XXX-XXX				1 OF 1