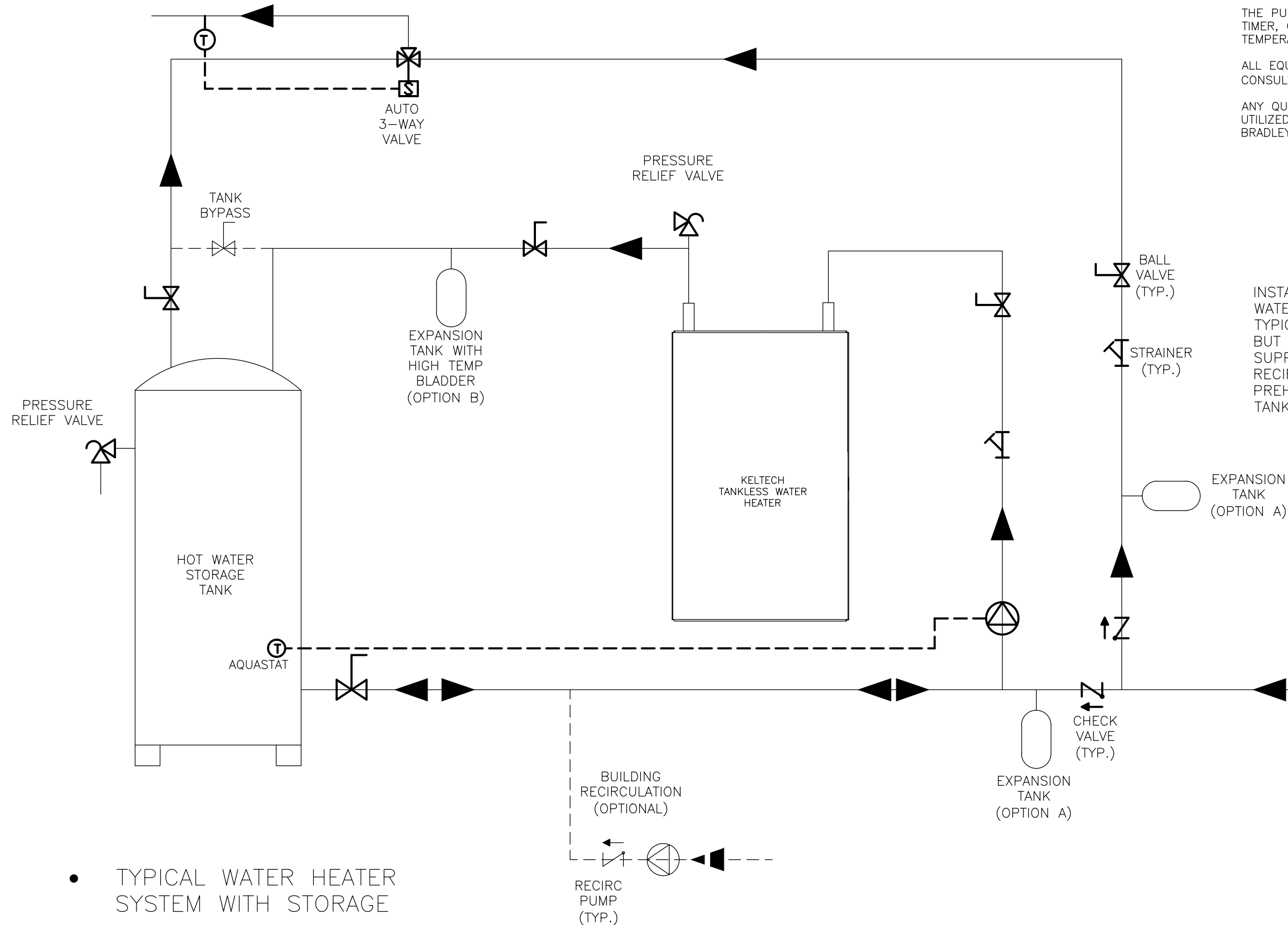


THIS DIAGRAM IS ONLY A SUGGESTED PLUMBING SCHEMATIC AND MAY NOT INCLUDE ALL STATE/LOCAL CODE REQUIRED EQUIPMENT, VALVE, ETC.

THE PUMP CAN BE CONTROLLED BY TEMPERATURE (AQUASTAT), TIMER, OR OCCUPANCY SENSOR TO MAINTAIN LOOP AT USAGE TEMPERATURE.

ALL EQUIPMENT AND PIPING SHALL BE SIZED BY CONSULTANT/ENGINEER.

ANY QUESTIONS REGARDING THE KELTECH HEATER, HOW IT CAN BE UTILIZED, OR CHANGES TO THE SYSTEM SHOULD BE SENT TO BRADLEY CORP. ATTN: NICK GREENE



INSTANTANEOUS WATER HEATER SYSTEM WITH HOT WATER STORAGE TANK. EXPANSION TANK IS TYPICALLY INSTALLED ON THE COLD WATER INLET BUT CAN BE INSTALLED ON THE HOT WATER SUPPLY AFTER THE WATER HEATER. A BUILDING RECIRCULATION LINE IS AN OPTION TO ASSIST IN PREHEATING WATER FLOWING TO THE STORAGE TANK.

• TYPICAL WATER HEATER SYSTEM WITH STORAGE

DATE	REV	DESCRIPTION	ECN	BY
		REVISION HISTORY		
TOLERANCES UNLESS OTHERWISE SPECIFIED		<small>This print contains information that is PROPRIETARY. Disclosure of any information on this document cannot be made without written permission of Bradley Corporation.</small>		
		DRAWN BY:	NJG	
		DATE:	10/22/14	
		SCALE:	NTS	
		FIRST USED:		
		REF:		
MATERIAL:		XXXXXXXXXX		
NAME:		XXXXXX XXXXXX		
DWG NUMBER:		XXX-XXX		SHEET 1 OF 1