



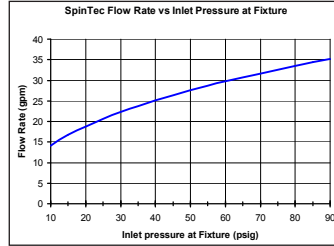
# Self-Contained Enclosed Outdoor Safety Shower

- 100% Fiberglass surround construction - exterior includes UV inhibitor gel-coat
- Insulation factor protection rating R-8
- Top & Base lift capability
- Combination Drench Shower, Eyewash and Eye/Face Wash Fixtures are UL Certified to ANSI Z358.1
- Designed to National Electric Code
- Flame-Retardant Resin with a Class 1 Flame Spread Index per ASTM E-84

## Standard Equipment

### Safety Shower, Eyewash

Standard showerhead is 3.1" (78.7mm) diameter highly visible yellow impact-resistant plastic. SpinTec™ drench showerhead features integral 22 GPM (83.3 LPM) flow control, conserves water and provides equal distribution throughout the spray pattern providing a more effective wash down. Shower is activated by a stainless steel pull rod.



Bradley's drench shower and eyewash ship with corrosion-resistant BradTect® yellow coating, providing additional protection from nature's elements (optional stainless steel drench shower and eye/face wash is available).

The Halo eyewash system offers a high performance rinsing platform that provides rapid relief to an individual's eyes that have been injured by chemicals or particulates. The eyewash includes an integral 5.1 GPM (19.2 L) flow control, providing water at a safe velocity while maintaining its effectiveness (exceeds minimum water flow of 0.4 GPM (1.5 L) at 30 PSI (2.0 bar)). The eyewash is protected by flip open dust covers that open when the product is activated. Safe, steady water flow is assured by integral flow control in the sprayhead assembly. Halo™ is covered by one or more of the following patents: 9,700,484; 9,314,398; D662220; D673298; D662605; D685920; D662219; and D671228. Other patents pending.

### Inlet Water Supply

1½" cam lever coupling on exterior wall.

## Enclosure Construction

### External Features

The shelter is constructed from 100% FRP (fiberglass-reinforced plastic) that is laminated and sealed around an insulating core. The FRP is coated with a UV-inhibiting gel coat to protect the roof, walls, and base from degradation due to prolonged exposure to sunlight, harsh chemicals or salt-laden marine environments.

The special flame-retardant resin has a Class 1 flame spread index per ASTM E-84 and a smoke developed index of more than 450.

The corrosion-resistant enclosure helps protect against internal freezing with an insulation protection factor of R-8.

Exterior of shelter is safety yellow (RAL-1018), and includes safety decals directing the injured party to the weather resistant double-acting spring hinge doors that include stainless steel handles and viewing windows with safety glass. The crash doors include weather strips to maintain the maximum seal against wind, rain and snow.

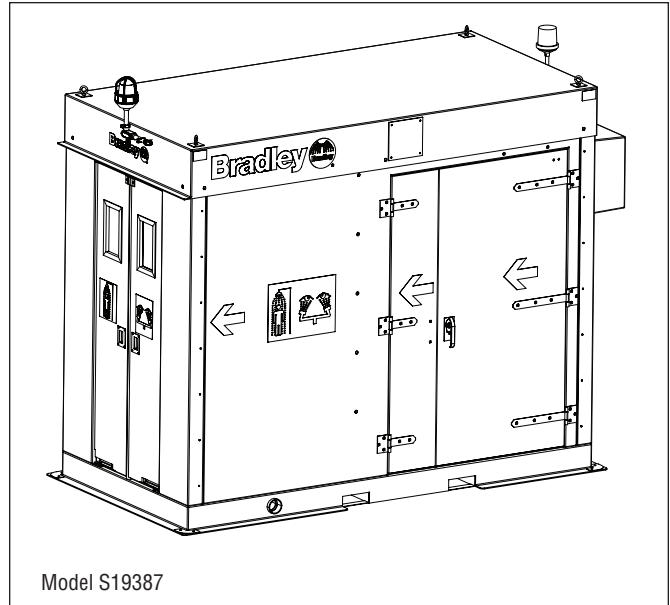
The FRP base includes integral forklift slots for added protection when moving the shelter with a fork truck. Stainless steel lifting eyes are attached to the roof, permitting crane lifting when placing the unit.

### Internal Features

The shower area includes a sloped drain below a removable fiberglass floor grate. Three drain ports are provided (left, right, center) and can be connected to external drain plumbing in any configuration using a 3" NPT fitting in any port.

An FRP splash panel is located behind the shower fixture allowing separation between the shower and the tepid water supply area.

Lockable FRP maintenance doors are located at each side at the rear of the shelter allowing easy access to the tepid water system and internal space heating systems. Waterproof flooring in this area allows for wash down and guides water flow to the main shower drain area.



## Code Compliance and Certifications



UL Classified to ANSI/ISEA Z358.1



UL Listed Industrial Control Panel(s) for US and Canada

Designed to the National Electrical Code (NEC/NFPA70)



**Bradley Enclosed Safety Showers are non-cancelable, non-refundable and non-returnable.**



# Self-Contained Enclosed Outdoor Safety Shower

## Tepid Water Delivery System

The self-contained enclosed safety shower holds 540 gallons of water to provide the ANSI required simultaneous flush from the drench shower and eyewash for a continuous 15-minute duration. The system must be combined with a water preservative, which prevents bacteria, fungi and algae growth. A heating element maintains the water between the ANSI-prescribed range of 60-100°F (16-37°C), providing a tepid flush. An electronic control system uses a temperature sensor to monitor the water temperature. The water is automatically recirculated to maintain an evenly distributed temperature and to minimize stagnant water.

The internal plumbing is equipped with a freeze protection valve that automatically begins to discharge water if it drops below 35°F (2°C), but is fully closed at temperatures above 40°F (5°C). To protect against scalding, the electronic controls automatically disable the shower and facewash, and activate an alarm, if the water temperature becomes hotter than 95°F (35°C).

## Electrical/Signaling System

### Water Temperature Sensing Alarms

A panel of exterior indicating lights provide the status of water and air temperatures inside the shelter, along with the water level and water pressure. The temperature sensing alarms alert when the water temperature has fallen below the ANSI/ISEA Z358.1 recommended level of 60°F (16°C). Conversely, the alarm provides additional dry contacts that can be connected to a remote monitoring location and signal when the unit has been activated.

**Bradley Enclosed Safety Showers are non-cancelable, non-refundable and non-returnable.**

### Signaling System

An exterior warning light flashes and a horn sounds the alarm upon activation of the safety shower system. The system includes signal system reset and horn silencer features for responder control.

### Electrical System

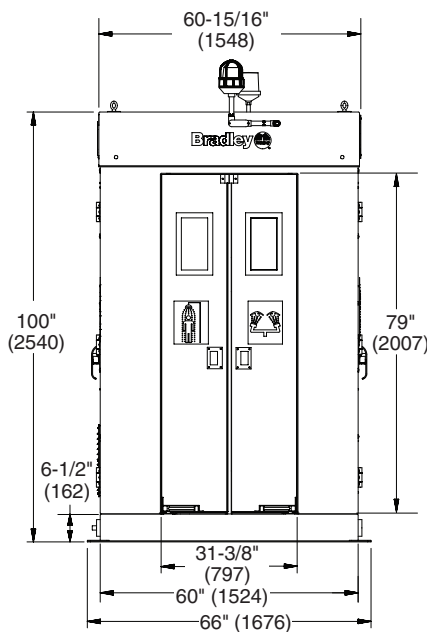
Standard electrical components consist of an exterior over-door beacon light, internal ceiling lighting, alarm system and internal convection space heater. The convection heater protects the enclosure to -40°F (-40°C). The electrical control enclosure is located inside the shelter for long life and dependability. Standard unit operates on either 208 or 240 VAC, 60 HZ, single phase power. All electrical power is supplied by a single feed into the unit, and all internal circuits are fuse-protected.

### Pressure Booster

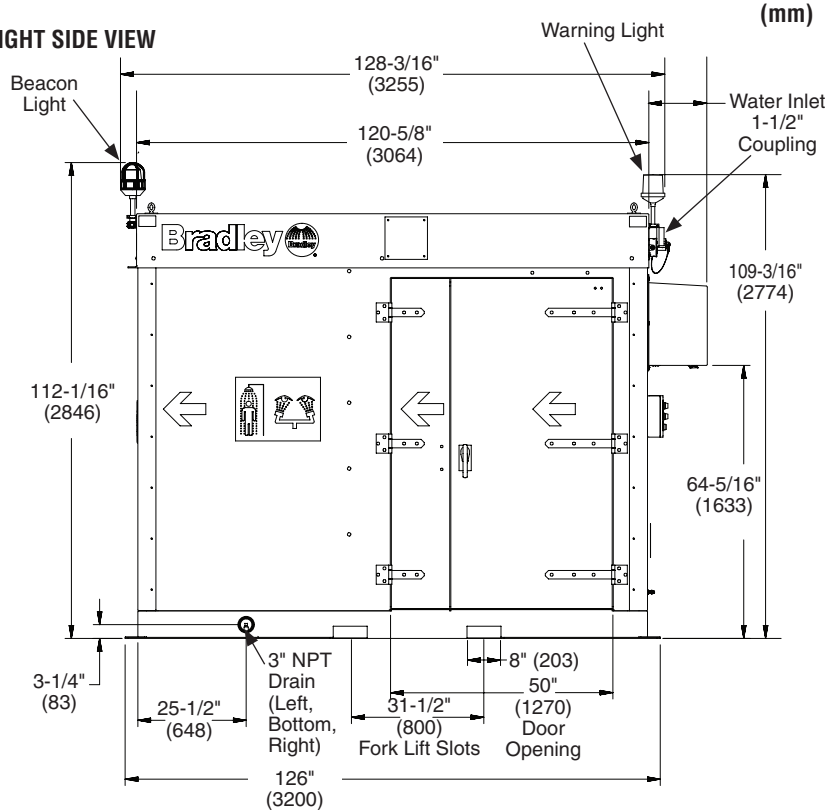
The S19387 safety shower includes a pressure booster pump to provide a robust water pressure for both the shower and the facewash. The pump is automatically started when either the shower or facewash is activated, and shuts off when the water level in the tank reaches a minimum or when both the shower and the facewash are de-activated.

- Only one electrical connection is required.**
- Horn silencer pushbutton standard; the signal light continues to alert first responders until alarm condition is cleared and system is reset.**

FRONT VIEW



RIGHT SIDE VIEW

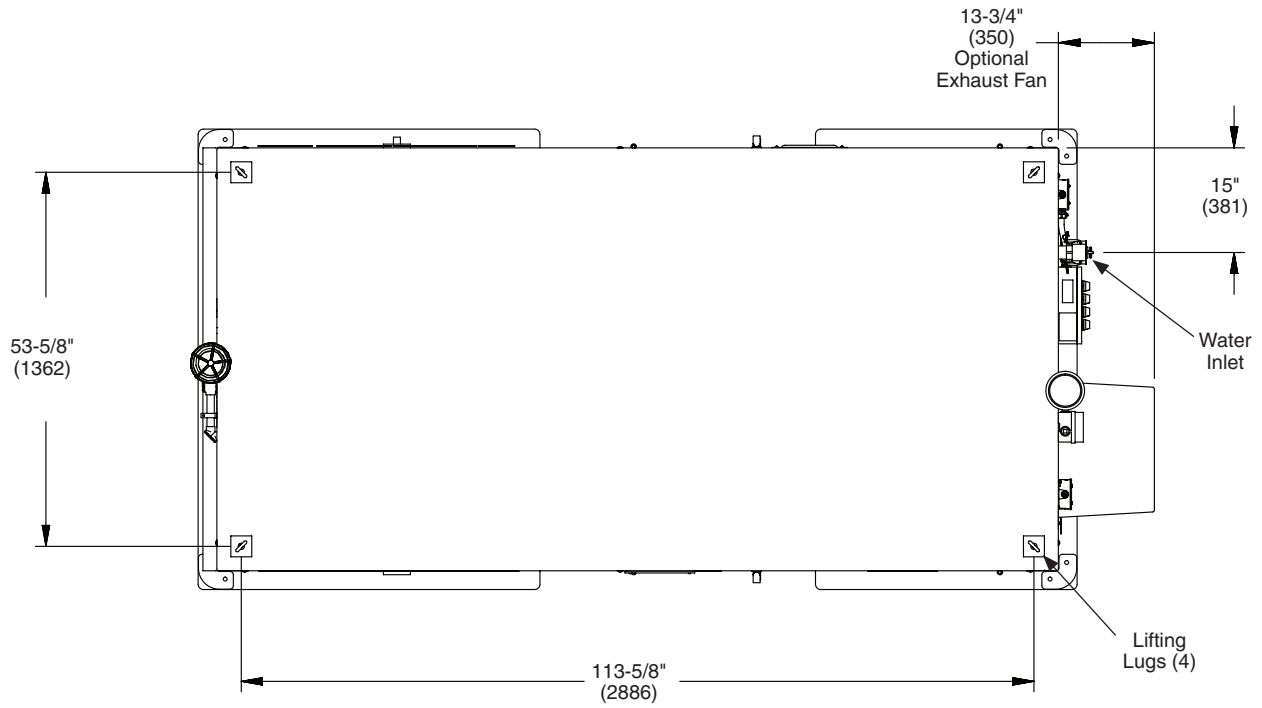




# S19387 Self-Contained Enclosed Outdoor Safety Shower

TOP VIEW

(mm)



**Bradley Enclosed Safety Showers are non-cancelable, non-refundable and non-returnable.**



# Self-Contained Enclosed Outdoor Safety Shower

## Model

S19387 Self-Contained Enclosed Outdoor Safety Shower



**Bradley Enclosed Safety Showers are non-cancelable, non-refundable and non-returnable.**

## Selections (must select one from each category)

### Electrical Class:

- GA General Area Classification
- D2 Class I, Division 2, Groups C, D; T-Code: T3
- D1 Class I, Division 1, Groups C, D; T-Code: T3

### Supply Voltage:

- V2 208V 60Hz single phase
- V4 240V 60Hz single-phase

### Safety Shower:

- EW Halo eyewash and Spintec drench shower with Bradtec yellow coated pipe
- FW Halo eye/face wash and Spintec drench shower with Bradtec yellow coated pipe
- SS All stainless steel Halo eye/face wash, Spintec drench shower and piping

### Enclosure Cooling System:

- O No exhaust fan
- FN Exhaust fan added

### Custom Adders (may impact electrical rating):

---



---



---

Job Name:  
 Location:  
 Revision Date:



**A signed submittal drawing is required. This submittal drawing will be provided upon receipt of order.**

## Must Be Filled Out with Purchase Order

This is to acknowledge that the "End User" identified below has marked the boxes in the selection guide above to design an enclosed safety shower that will meet its site and specification requirements, and wishes to have Bradley custom-build that enclosure to its order, on the understanding that the order may not be canceled, the enclosure may not be returned and that no refund of any portion of the purchase price for the enclosure will be made (except under Bradley's warranty). It is also to acknowledge that the "Distributor" identified below is placing an order with Bradley for the enclosed safety shower, on the Terms and Conditions found on Bradley's website, at [www.bradleycorp.com](http://www.bradleycorp.com), again on the understanding that the order may not be canceled, the enclosure may not be returned and that no refund of any portion of the purchase price for the enclosure will be made (except under Bradley's warranty).

name of "End User" \_\_\_\_\_  
 by \_\_\_\_\_  
 title \_\_\_\_\_  
 date \_\_\_\_\_

name of "Distributor" \_\_\_\_\_  
 by \_\_\_\_\_  
 title \_\_\_\_\_  
 date \_\_\_\_\_