

Endless Supply of Dirty Dishes?

Endless Supply of Hot Water

Keltech® Electric Tankless Water heaters

provide a continuous supply of high temp water for the toughest demands a commercial restaurant can dish out.



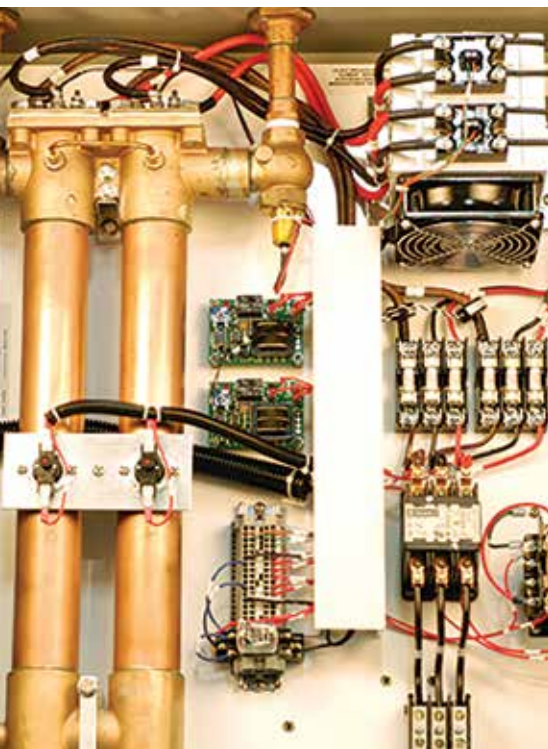
BRADLEYCORP.COM



On demand. For all high temp needs. Engineered to meet your commercial restaurant needs, Keltech electric tankless water heaters from Bradley ensure that water is heated to precisely the right temperature for cleaning and sanitizing. Hitting and maintaining your set point temperature can be critical for restaurants and could be the difference between remaining open for business or being shut down. Under constant flow and pressure, temperatures stay within $\pm 1^\circ\text{F}$ ($\pm 0.5^\circ\text{C}$) of set point. Large internal passageways minimize pressure drop.

Efficient water heating solutions. Save energy. Easy to install. Perform on demand for efficient energy usage. Unlike boilers and tank systems, tankless water heaters only draw energy when needed. Utility costs are minimized because there is no need to keep a 300 gallon (1,136 l) tank heated 24/7/365. Easy to install – just add water and power. All you need is one electrical connection and a cold water line.

Premium quality. Long lasting optimal performance. Keltech electric tankless water heaters are designed to handle your most challenging high temperature applications. Whether you need a complete rack system or a cost effective, reliable way to deliver high temperature water to your commercial kitchen equipment, there is a Keltech solution for your specific application. Premium features come standard. All models are precision-engineered with materials, such as Incoloy 800 sheathed resistive elements, copper piping and robust brass castings, that keep your restaurant operating at maximum efficiency.



C2N Series

- Temperature booster applications
- Precision systems custom engineered to fit your application
- ETL/cETL certified to UL and CSA standards
- Low flow: 0.75 - 15 GPM (2.8 - 56.8 L-Min)
- 85,000 - 170,000 BTUs
- Auto reset high limit switch
- Bi-metal manual reset
- Fan-cooled solid state relays
- Standard NEMA 4 enclosure
- Wall- or floor-mounted
- 3/4" connections
- Lead-free



C2N/363/208D-T

Delivers $+185^\circ\text{F}$ (85°C)
Also available in 480V
or 600V 3-Phase Delta

See all models and technical information @ bradleycorp.com

+1 262 251 6000
800 BRADLEY bradleycorp.com
W142 N9101 Fountain Boulevard
Menomonee Falls, WI USA 53051
4187-0715

