

# Toilet Partitions 1-2-3

Quickly upgrade your washrooms.

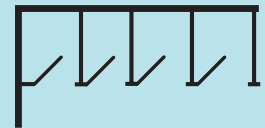
**No muss! No fuss!**



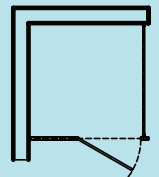
Bradley  
has you  
covered!



Between-Wall



In-Corner



In-Corner ADA

## Most popular designs with you in mind

- ✓ Materials for every budget
- ✓ Colors and finishes for every application
- ✓ Standard mounting – floor mounted overhead braced
- ✓ Quote not required

[BRADLEYCORP.COM](http://BRADLEYCORP.COM)



MATERIAL

BRADLEY  
PART NUMBER DESCRIPTION

DIMENSIONS

Most Popular

**Powder Coat**

- Budget-friendly
- Best value
- Welded corners



Almond (ALM)



Warm Gray (WGR)



Dove Gray (DGR)



Buff (BUF)



Glacier Blue (GLB)

**Between Wall Stalls**

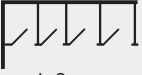
BW13660-xxxx	One Between Wall Stall	36" (914 mm) wide
BW23660-xxxx	Two Between Wall Stalls	72" (1829 mm) wide
BW33660-xxxx	Three Between Wall Stalls	108" (2743 mm) wide
BW43660-xxxx	Four Between Wall Stalls	144" (3658 mm) wide
BW53660-xxxx	Five Between Wall Stalls	180" (4572 mm) wide



Between-Wall

**In Corner Stalls**

IC13660-xxxx	One In-Corner Stall	36" (914 mm) wide
IC23660-xxxx	Two In-Corner Stalls	72" (1829 mm) wide
IC33660-xxxx	Three In-Corner Stalls	108" (2743 mm) wide
IC43660-xxxx	Four In-Corner Stalls	144" (3658 mm) wide
IC53660-xxxx	Five In-Corner Stalls	180" (4572 mm) wide



In-Corner

**In Corner ADA Stall**

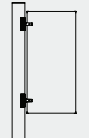
ICADA-xxxx	One In-Corner ADA Stall	60" (1524 mm) wide
------------	-------------------------	--------------------



In-Corner ADA

**Urinal Screens**

WHUS12-xxxx	Urinal Screen	12" w x 42" h (305 mm w x 1067 mm h)
WHUS18-xxxx	Urinal Screen	18" w x 42" h (457 mm w x 1067 mm h)
WHUS24-xxxx	Urinal Screen	24" w x 42" h (610 mm w x 1067 mm h)

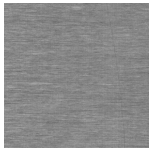


Urinal Screen

Never Rusts

**Stainless Steel**

- Tough and resistant
- High end look
- Welded corners



Stainless Steel (SS)

**xxxx = Specify material color as follows:**

**Powder Coat:** specify alpha code shown below color name

**Stainless steel:** specify SS

**Bradmar:** specify numeric code shown below color name

Best Quality

**NOW AVAILABLE!**

**Bradmar Solid Plastic**

- Ideal for wet environments
- Easy to clean
- Available in In-Corner one- or two-stall, or ADA



Beige (S202)



Deep Blue (S203)

**Examples**

**Need 3 stalls Between Wall in Almond Powder Coat?**

Order: BW33660-ALM

**Need a Single ADA stall in SS?**

Order: ICADA-SS

**No Muss! No Fuss!**

**Contact your Bradley Representative to order or for more information.**

**Modifications do require a quotation.**

For more information contact:

Visit [bradleycorp.com](http://bradleycorp.com) for technical information

+1 262 251 6000  
800 BRADLEY [bradleycorp.com](http://bradleycorp.com)  
W142 N9101 Fountain Boulevard  
Menomonee Falls, WI USA 53051  
4223-1016

