

Installation Instructions

S50-310 (Semi-Circular) S50-311 (Circular)

Accu-Zone® Infrared Control Conversion Kit for Terrazzo & Stainless Steel Classic Washfountains (Non-sectional)

Table of Contents

Pre-Installation Information	2
Parts List	2
Electrical Hook-up	3
Old Valve Removal	3
Solenoid Valve Installation	3
Supply Tube Installation	4
Installation of Infrared Module	
(A or O Drain)	4
Assembly of Components (A or O Drain)	5
Installation of Infrared Module	
(B or H Drain)	6
Assembly of Components (B or H Drain)	7
Electrical Connections	8



IMPORTANT

Read this entire installation manual to ensure proper installation.

Flush all the water supply lines before making connections.

This installation manual and parts list should be filed by the owner or maintenance department.

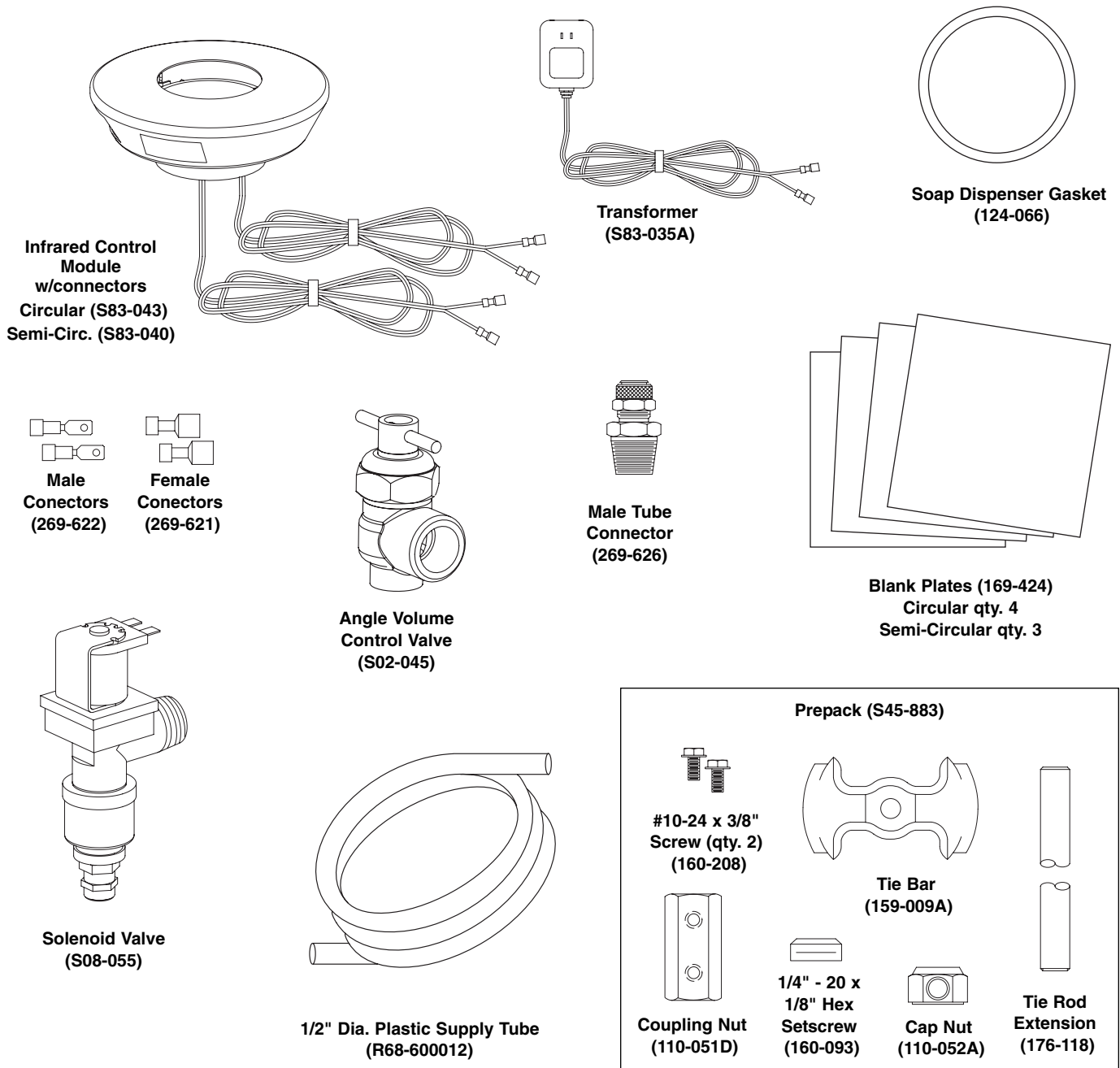
Pre-Installation Information

Supplies Required:

- Teflon tape or pipe dope
- 18-gauge two-conductor lamp cord if remote transformer is located further than six feet from the washfountain.

Check Contents

Separate all parts from packaging and check each part with the drawing below. Make sure all parts are accounted for before discarding any packaging material. If any parts are missing, do not attempt to install your Bradley Infrared Control Conversion Unit until you obtain the missing parts.



Installation Instructions

Step 1: Electrical hook-up

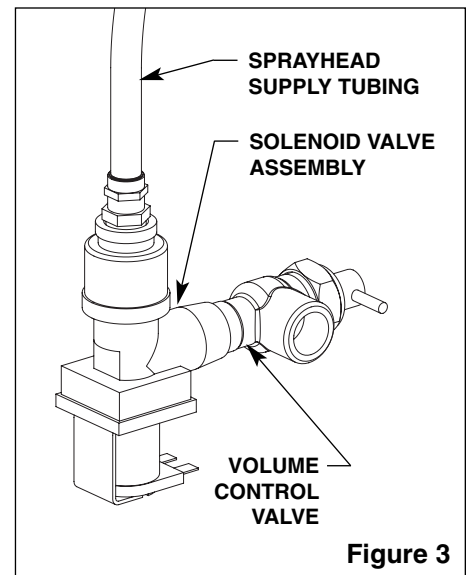
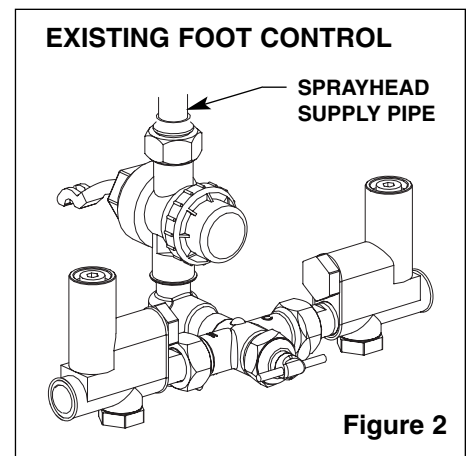
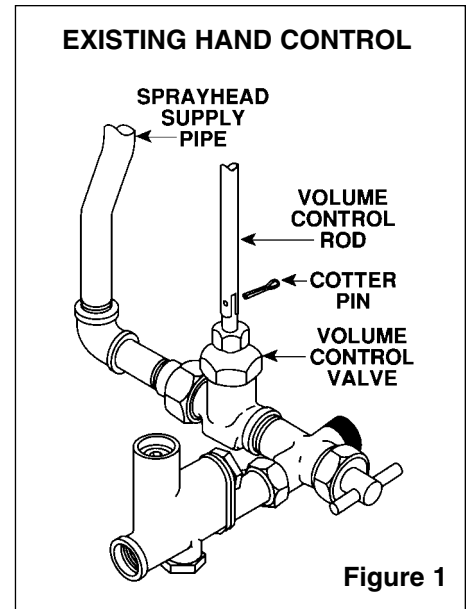
1. The electrical power to the washfountain can be wired in one of two ways. If you are not sure which way is best for your installation, consult with an electrician before proceeding. Always check local codes for compliance.
 - **Transformer Remote:** Select a convenient location as close to the fixture as possible to install a 110 VAC GFI outlet where the transformer can be plugged in. If needed, use the two male and two female connectors provided to add 18-gauge lamp wire to the transformer lead wire. The two female connectors must be connected to the ends of the transformer lead wire so that they can be connected to the infrared module when the fixture is installed
 - **Transformer Local:** Have an electrician install a 110VAC GFI outlet into the base of the washfountain where the transformer is to be plugged in.

Step 2: Remove old valve assemblies

1. Turn the water supply off.
2. Remove the pedestal panels to access the valves.
3. Disconnect the sprayhead supply pipe shown in Figure 1 (for hand control) or Figure 2 (for foot control).
4. Remove the old valves.
 - **For Hand Control models:** Remove the volume control rod, then the old volume control valve. Install the new angle volume control valve (Figure 1).
 - **For Foot Control models:** Remove the foot valve (Figure 2), then the foot rail. For circular washfountains, locate the foot rail joint and drive out the tapered pin from the small end. Spread the foot rail and lift it over the bowl for removal. For semi-circular washfountains, disconnect the pivot bolts and remove the rail. Remove the foot levers and parts for the foot operating mechanisms. Install blank plates to cover the foot lever holes, if desired.

Step 3: Install solenoid valve assembly

1. Install the solenoid valve assembly onto the volume control valve with pipe thread sealant as shown in Figure 3.



Installation Instructions *continued...*

Step 4: Install plastic supply tube

NOTE: Refer to Figure 4 for tube installation.

1. Remove all of the components above the top of the support tube. (See Figure 5 or 6).
2. Install the male tube connector into the sprayhead with pipe thread sealant.
3. Connect 1/2" supply tubing to sprayhead as shown in Figure 4. Follow the procedures below when installing 1/2" tubing into sprayhead to ensure that you achieve a leakproof seal.
 - Using a sharp knife, cut tubing squarely and remove any burrs. **DO NOT** pinch or crush end of tubing.
 - Loosen nut on fitting. Moisten end of tube and push into fitting until it is firmly seated. Tighten nut to secure tube to fitting (make sure nut is securely tightened).
 - If connector leaks, reseal tubing according to above procedure. If leaking persists, replace male connector, or call your Bradley representative for assistance.
4. Place sprayhead with 1/2" supply tube attached onto support tube as shown in Figure 5 on page 5. Run tubing down through support tube.

NOTE: For semi-circular or corner washfountains, make sure spray holes point away from the wall.

5. Connect the supply tube to the tube connector on the solenoid.

Step 5a: Install Infrared module (Type A or O drain)

NOTE: Refer to Figure 5 on page 5 for Type A or O drain.

NOTE: For washfountains with B or H drain, follow the instructions found on page 6 and refer to Figure 6 on page 7.

1. Install the upper tie bar (parallel to the wall for semi-circular models) on the sprayhead and install the lower tie rod (the longer threaded rod) through the center hole of the upper tie bar, lower tie bar and tie rod nut.
2. Attach the coupling nut and infrared module tie rod extension (4-1/4" long).
3. Feed the female and male connectors attached to the module down through the support tube.
4. Place the infrared module on the sprayhead and position with the sensors pointed toward wash areas and with the upper tie bar fitting into the notches on the bottom of the module. Rotate the module until it locks in with the tie bar.
- 5a. **FOR UNITS WITH SOAP DISPENSER:** Install the spacer, soap dispenser and dispenser cover using the coupling nut, third tie rod (8-5/8" long) and second coupling nut. Secure with acorn nut and socket head set screw.
- 5b. **FOR UNITS WITHOUT SOAP DISPENSER:** Secure infrared module cover with acorn nut and socket head set screw.
6. Continue with instructions and Figure 7 on page 8 for wire connections.

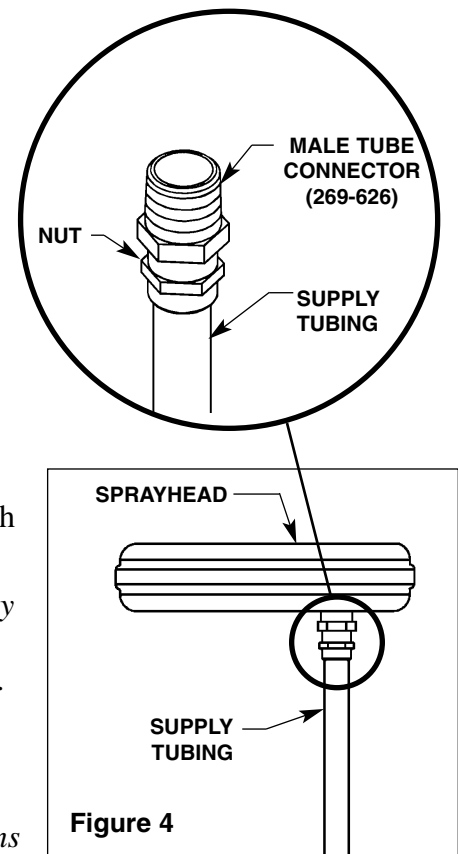


Figure 4

Assembly of Components - Infrared Control Module

For Units with Type A or O Drains

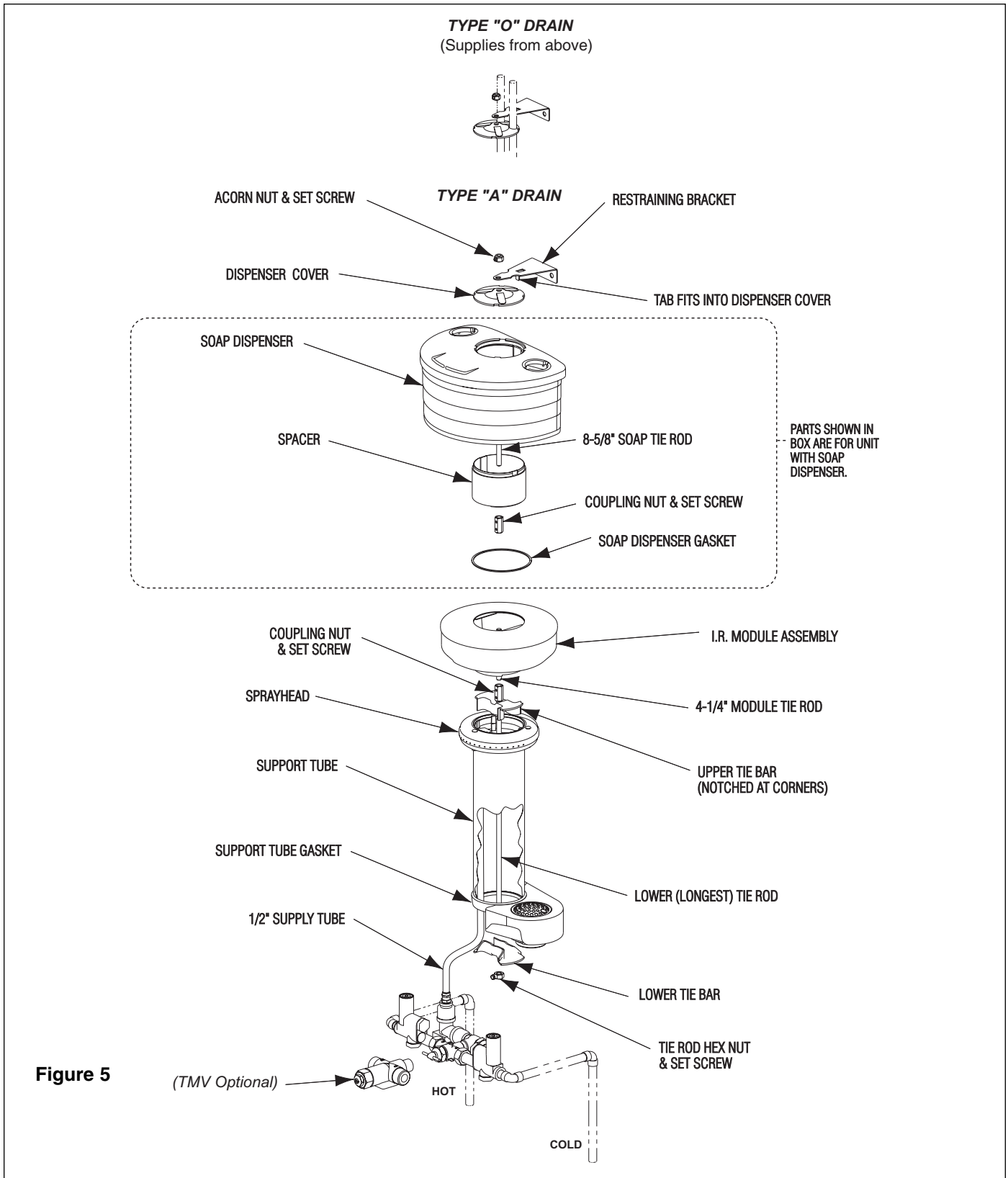


Figure 5

Installation Instructions *continued...*

Step 5b: Install Infrared module (Type B or H drain)

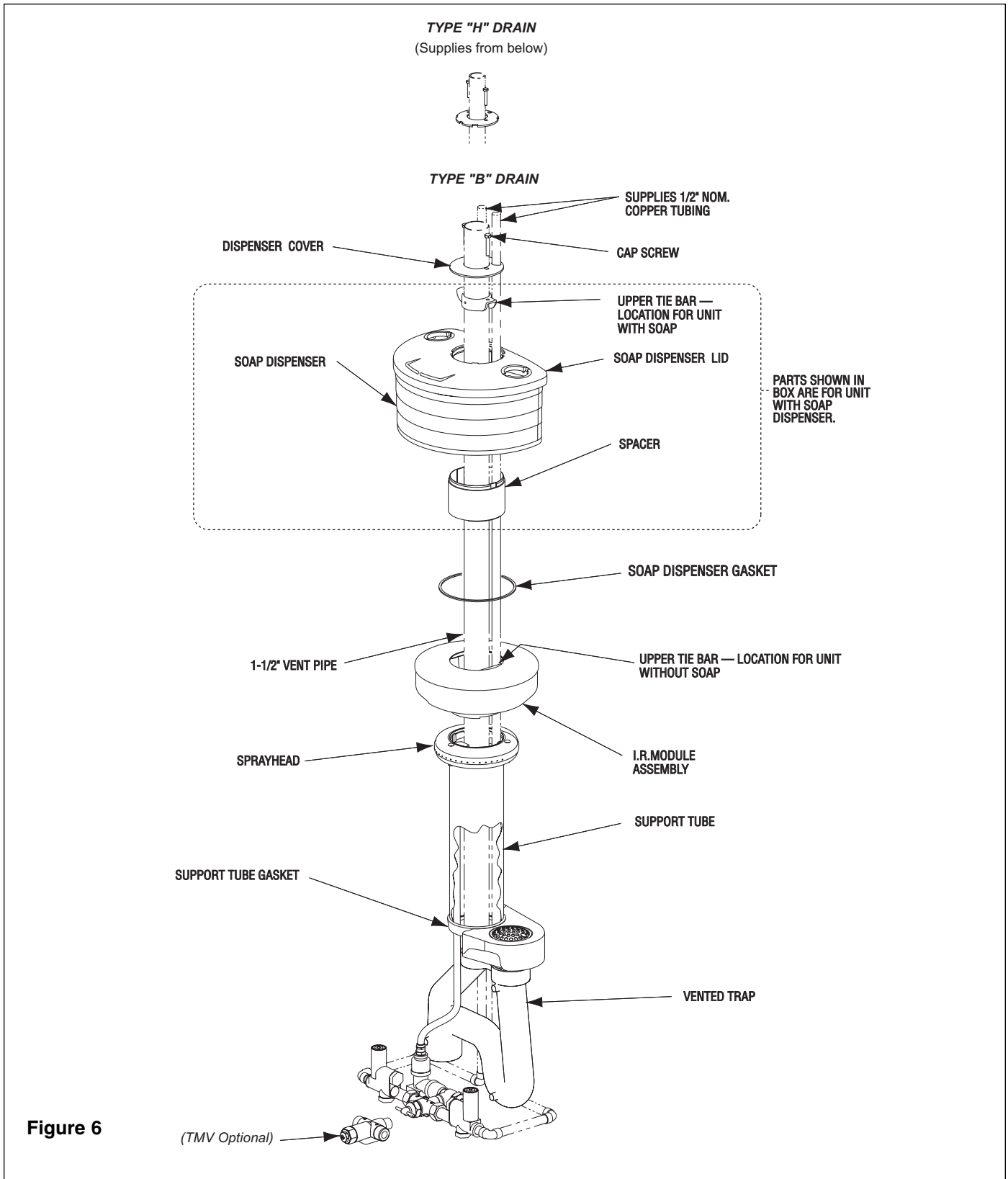
NOTE: Refer to Figure 7 on page 7 for installation of unit with Type B or H drain.

NOTE: For washfountains with Type A or O drain, follow the instructions found on page 4 and refer to Figure 5 on page 5.

1. Feed the female and male connectors attached to the module down through the support tube.
2. Place the infrared module on the sprayhead and position with the sensors pointed toward wash areas.
- 3a. **FOR UNITS WITH SOAP OPTION:** Place the spacer, soap dispenser and cover in position on top of sprayhead (see Figure 6). Slide tie bar over 1-1/2" vent pipe 1/2" below top of soap dispenser lid and secure with the two cap screws included with the tie bar.
- 3b. **FOR UNITS WITHOUT SOAP OPTION:** Slide tie bar over 1-1/2" vent pipe, 1/2" below top of infrared module and secure with set screws. Secure the dispenser cover over 1-1/2" vent pipe and secure with the two cap screws included with the tie bar.
4. Continue with instructions and Figure 7 on page 8 for wire connections.

Assembly of Components - Infrared Control Module

For Units with Type B or H Drains



Installation Instructions

Step 6: Electrical Wiring Connections for Infrared Control

NOTE: Refer to Figure 5 on page 5 for installation of unit with Type A or O drain. Refer to Figure 6 on page 7 for installation of unit with Type B or H drain.

NOTE: Refer to Figure 6 for wire connections.

1. Connect the wires with the female connectors from the infrared module to the solenoid valve.
2. Connect the wires with the male connectors from the infrared module to the transformer wires.
3. Plug the transformer into the 110 VAC GFI outlet.
4. Turn the water supply on and check for leaks and adequate water flow. Replace the access panels on both sides of the washfountain.

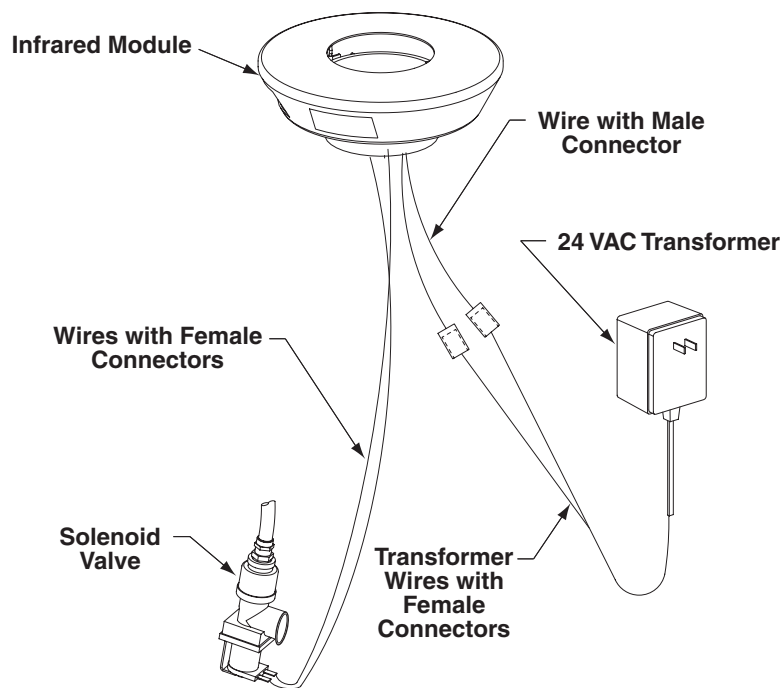


Figure 7