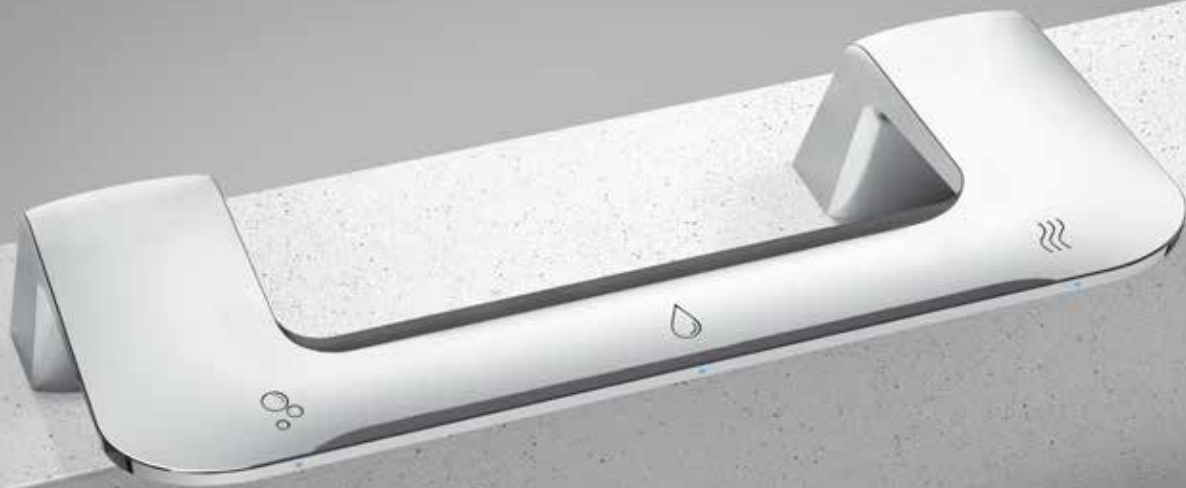


TOTAL  
TRANSFORMATION.



CLEAN. RINSE. DRY.



ALL-IN-ONE

WashBar® Solutions

Commercial Washrooms. Brought to Life.





# Elegance and Performance Brought to Life.

## Introducing Bradley's Award-Winning WashBar® Technology

From the inventor of all-in-one sink systems comes the WashBar. Providing a completely touchless handwashing experience, the WashBar houses soap, water and dryer in one intuitive and attractive unit. Thoughtfully designed to streamline the handwashing process, the WashBar transforms the washroom to a modern wash space free of clutter. This is the apex of commercial design brought to life.

Convenient handwashing. End soap and paper towel waste. Eliminate water splashing on users or dripping across the floor. Performance transformed.

This innovative solution for commercial washrooms is ADA compliant making it perfect for:

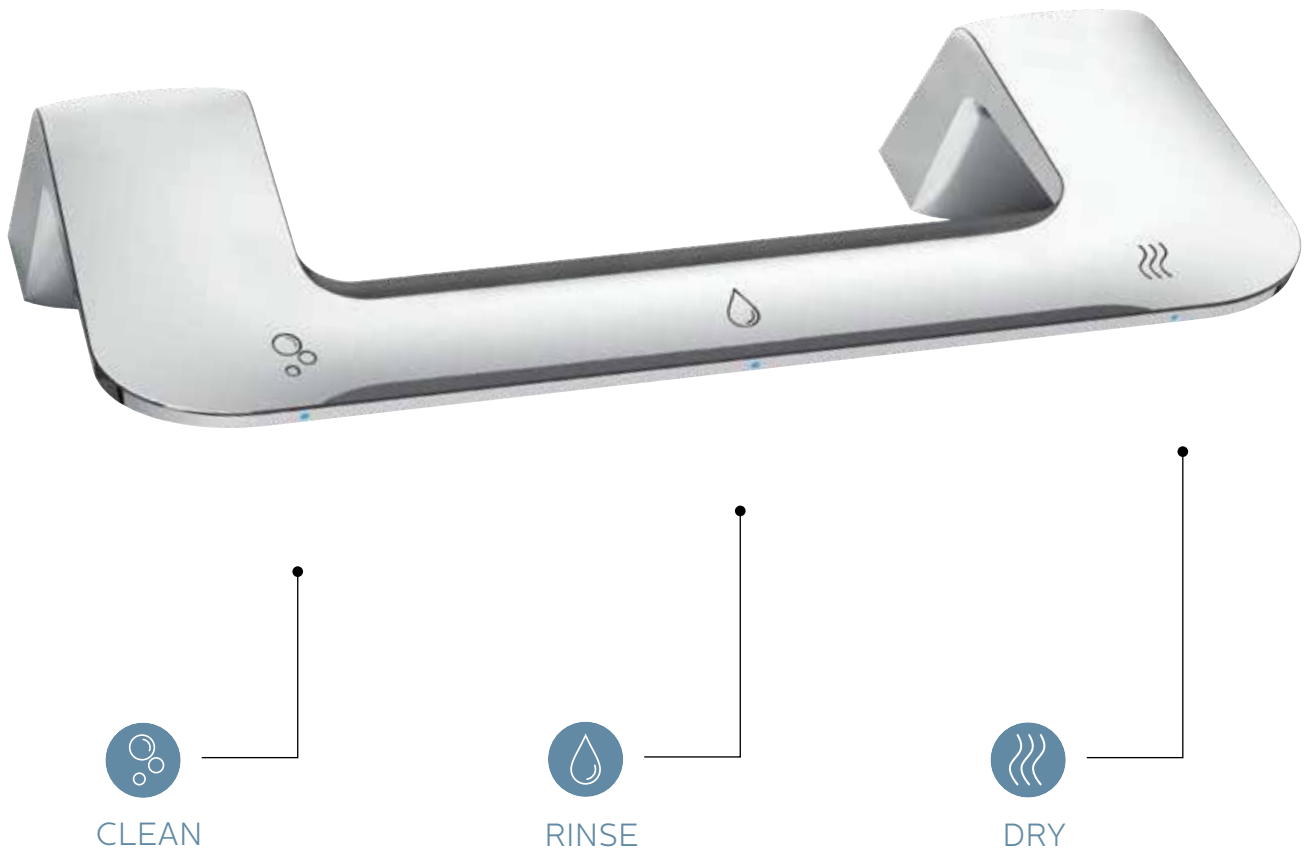
- Aquariums and Museums
- Entertainment and Amusement Centers
- Banks and Credit Unions
- Healthcare and Office Buildings
- Colleges and Universities
- Restaurant and Retail Locations



# NEW All-in-One, Touch-Free WashBar

## Built-in Smart Technology

All the fundamentals of handwashing have been designed into our cutting-edge WashBar with care. The single piece, multifunction, chrome plated fixture provides convenience and safety by keeping water off the floor. Easy-to-identify icons orient and guide the user and LED lights change from blue to green when a function is activated. The clean, rinse, and dry functions operate independently and will not accidentally activate their neighboring function. The WashBar transforms the handwashing experience.



## WashBar Advantage: Soap+Water+Dryer



Liquid or foam soap  
Low level LED indicator  
1 gallon (3.8 L) soap container  
requires fewer refills and saves  
on maintenance  
No soap tank to clean or worry  
about being contaminated



0.5 GPM (1.9 LPM)  
Ultra-high efficient 0.35 GPM  
(1.3 LPM) option available  
for sustainable applications



12-15 second dry time  
Heated air stream for ultimate comfort  
Adjustable speed motor for faster  
or quieter hand drying (64-76 dB)  
96% less expensive than  
paper towels



# Verge® with WashBar

## Sleek, Cast-Formed Basins in Natural Quartz

Made with Evero® Natural Quartz, the Verge® wash basin is cast-molded as one piece, and delivered to your project as a complete fixture to assure quality craftsmanship. Sleek, elegant and refined, the Verge was designed with architects and interior designers in mind.

The Verge basin has been engineered to work in harmony with the WashBar dryer keeping water in the basin and floors dry and safe for users.



## The Elegance of Quartz with the Durability of Granite

Inspired by nature, Evero is the first and only quartz material that is cast-formed with no fabrication or seams. It is non-porous, completely seamless, and easy to clean and maintain. Virtually maintenance-free, Evero provides a refined look that will last a lifetime.

GREENGUARD Certified products are certified to GREENGUARD standards for low chemical emissions into indoor air during product usage. For more information, visit [ul.com/gg](http://ul.com/gg).







Verge 2-Station in Andorra  
with WashBar

# OmniDeck™ with WashBar

## Beautiful, Customized Solid-Surface Basins with Personal Space

OmniDeck with WashBar offers a versatile, Terreon® solid surface deck with the all-in-one WashBar. This handwashing solution provides personal space with up to four individual bowls. Placement of the bowls, size of front and side aprons and optional backsplash can all be tailored to meet your design requirements.

The OmniDeck basins have been designed work in harmony with the WashBar dryer keeping water in the basin and not on the floor providing a cleaner safer handwashing experience.



## Terreon®

### Refined Seamless Performance

Terreon solid surface is made to last, but when needed, can easily be repaired and renewed, thus minimizing the need for replacement or disposal. Terreon is a nonporous material which means it will not support the growth of mold, mildew or bacteria. Terreon is certified to meet the highest industry quality and performance standards for solid surface materials.

Terreon® solid surface material has achieved GREENGUARD GOLD Certification.







**NEW!**

## WashBar with Undermount Basin

### Design without Limits

The elegance and simplicity of the WashBar can now be used with a complex deck design or special deck material. Pair the WashBar with a Terreon solid surface or Evero natural quartz cast-formed undermount basin to the deck or countertop of your choice. From granite to quartz to concrete, you can have it all to match your specific design goals.



Package includes WashBar (soap, faucet and dryer platforms), basin and optional access panel.



NEW!

## WashBar Duo

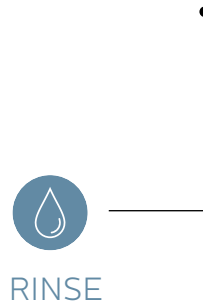
### Simple and Sophisticated

Bradley's award-winning WashBar is now available as a 'Duo' with soap and faucet in a single fixture. Enjoy all the same soap and water advantages of the WashBar while keeping your commitment to paper contracts or preference of hand dryers.

The new Duo is available with the Verge LVA basin in Evero natural quartz, OmniDeck 3010 in Terreon solid surface, or as a stand alone unit.



CLEAN



RINSE



Verge 2-Station in Antarctica  
with WashBar Duo





Verge 2-Station in Mykonos  
with WashBar



Verge 3-Station in Kalahari  
with WashBa

## Smart Never Looked So Good

The all-in-one, touchless WashBar is the industry's best, bar none. Sleek and sophisticated, this award-winning product creates a handwashing experience that simply can't be touched. With clean, rinse and dry functionality housed in a single component, the WashBar creates an attractive, intuitive, touchless handwashing experience in a groundbreaking and engaging design.

The all-in-one WashBar is the smart solution you've been waiting for.



Verge 1-Station in Mykonos  
with WashBar



**SAFE**

No more slipping on water  
dripped on the floor



**CLEAN**

No more paper towel  
waste on the floor



**COMFORTABLE  
& ACCESSIBLE**

Everything is within  
reach – design allows  
easier access for children  
and wheelchair users

**HANDWASHING & DRYING | ACCESSORIES | PARTITIONS | LOCKERS**  
[bradleycorp.com/Washbar](http://bradleycorp.com/Washbar)



**bradleycorp.com**  
800 BRADLEY +1 262 251 6000  
W142 N9101 Fountain Boulevard  
Menomonee Falls, WI USA 53051

4268-5-0819

