



## Metro Series Features - Soap and Faucet

- Refined, cylindrical design pairs with Verge™ faucet model S53-3300
- Matching soap and faucet designs that integrate seamlessly with Bradley lavatories\*\*
- Chrome-plated cast brass construction with optional in-stock PVD finishes\*
- Sensing optimized to eliminate false activations and maximize battery life
- Features include concealed sensor package, and durable PVD finish options
- Patents pending

## Soap Key Features

- Foam or liquid soap options
- Top-fill individual and multi-feed tank options
- Utilizes universal bulk soap
- Multi-station system supplies up to 6 soap dispensers
- Smart Sense System – Elegant translucent ring at the base of each dispenser gives a glowing indication of low battery, low soap, and overflow conditions
- Audible warning to stop filling before overflow occurs
- Spout reach designed to optimize handwashing space
- Touch-free infrared sensor-operated
- Power supply options to meet your application – battery pack or single AC plug-in adapter or AC adapter splitter assembly that accommodates up to 4 devices
- Cast brass spout construction with durable, environmentally-friendly finish\*

☒ Verge soap dispensers are not compatible with stainless steel sinks.

## Specification

Refined, cylindrical design pairs with faucet model S53-3300 and integrates seamlessly with Bradley lavatories\*\*. The dispenser is available with an individual or top fill multi-feed tank that is compatible with bulk foam or liquid soap. The multi-feed station system supplies soap to up to 6 soap dispensers. Activation through a touch-free infrared sensor that pairs seamlessly with Bradley's faucet dual sensor technology to eliminate false activations and maximize battery life. Dispenser shall feature chrome-plated cast brass construction with optional in-stock PVD finish.

## Overall Spout Dimensions

- Height: 4" (102 mm)
- Width: 1¾" (44 mm)
- Depth: 5½" (140 mm)

## Capacity

- Individual tank: 70.5 oz (2080 ml) w/ 2850 estimated activations per tank
- Multi-feed tank: 166.5 oz (5026 ml) w/ 6930 estimated activations per tank
- Multi-feed can support up to 6 soap dispensers

Verify all rough-in dimensions prior to installation.  
Consult local and national codes. Conformity and compliance to local and national codes is the responsibility of the installer.



Soap is shown with  
Polished Chrome finish.

## Product Compliance



ADA / ICC ANSI A117.1, Citation 309.4



UL electrical components



CE electrical components

## Finishes



Click on any color swatch to view as a larger image.



Polished Chrome



Brushed Black Stainless\*



Brushed Stainless\*



Brushed Bronze\*



Brushed Brass\*



Brushed Nickel\*

\*PVD Finishes, see PVD Finishes section.

## \* PVD Finishes

Physical Vapor Deposition is an intricate, environmentally friendly finishing process that molecularly bonds the finish to the faucet, creating a very hard, durable surface that will not corrode, discolor, or tarnish.

## Compatible Bradley Products

- [Verge Faucet – Metro Series](#)
- [Verge Lavatory Systems\\*\\*](#)
- [ELX Lavatory Systems\\*\\*](#)
- [LD-3010 Lavatory Systems\\*\\*](#)
- [Multi-Feed Soap Tank Assembly](#)



## Verge™ Deck-Mounted Soap Dispenser – Metro Series

6-3300

### Operation

Place hands under soap spout and hold for approximately 1.75 seconds. Spout will dispense liquid or foam soap depending on option selected.



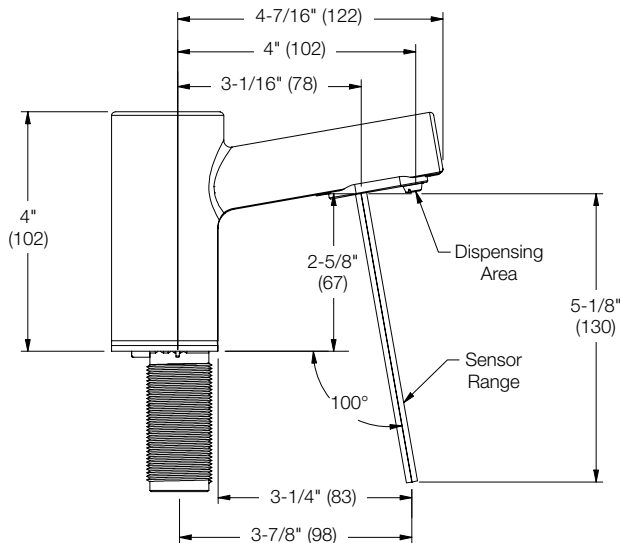
Allows 3 activations per 7.5 seconds.

Liquid: 0.65 ml to 0.80 ml per activation

Foam: 0.75 ml (liquid state) to 1.35 ml (foam state) per activation

### Sensor Technology

Infrared sensor with 5-1/8" (130 mm) activation range† that pairs seamlessly with Bradley's faucet dual sensor technology to eliminate false activations and maximize battery life. See Sensing Dimensions diagram.



† A minimum of 5-1/8" (130 mm) clearance between the sensor and surface or bowl is needed to ensure proper function of the sensor. For information on specific applications, please contact Bradley Technical Service.

### Indicator Lights

- Power ON (spout location): Flashes red for 1.2 seconds
- Power ON (multi-feed): Flashes green/red 3 times
- Soap dispense activation: Single flash green light
- Low power indication: Continuously flashing green light
- Low soap level: Flashes red when soap level is below 25% capacity
- Overflow condition: Steady red light with audible indication from buzzer lasts 2.5 seconds when fill level reaches 90% capacity

Verify all rough-in dimensions prior to installation.  
Consult local and national codes. Conformity and compliance to local and national codes is the responsibility of the installer.

Page 2 of 6

2/13/2025

[View Latest Version](#)

This information is subject to change without notice.

Bradley\_Soap\_Metro\_6-3300

### Power Source

Choose a power supply that meets your application:

(Power source is not automatically included with Verge soap dispensers and must be chosen from the list below.)

- Individual battery pack† – each set of batteries can accommodate up to 140,000 cycles
- Individual AC power adapter option for 120V/230V for use on a single device

Ordered separately:

- AC adapter splitter assembly accommodates up to 4 devices. Use when desired to serve in combination of multiple devices (faucet, soap dispenser, and multi-feed soap tank assembly) and/or stations. (Electrical Plug Type B\*\*\*\*)

† Quantity (4) D-cell batteries included with battery pack

### Mounting

**Accurate mounting is essential to ensuring proper sensor function**

**and performance.** Verify all rough-in dimensions prior to installation. Shank will accommodate a maximum counter thickness of 1-1/4" (32 mm). Mount dispenser in 1-3/8" (35 mm) diameter hole in lavatory or countertop with a minimum of 5-1/8" (130 mm) clearance between the sensor and surface or bowl. To meet sensor range requirements with drop-in or vessel-style basin applications, the dispenser must be mounted on the basin and not on the counter or surface behind the basin.

Minimum of 6" center-to-center spacing between Verge faucet and Verge soap drillings is required to ensure proper fitup of components. Verge faucets require a 2" (51 mm) maximum deck thickness.

### Product Materials

- Spout assembly: Chrome-plated cast brass w/ optional in-stock PVD finish
- Control box: ABS plastic
- Battery box: ABS plastic
- Soap tank: Polypropylene

### Soap Specifications

- Non-proprietary bulk soap (select foam or liquid)
- Liquid: Viscosity range of 100-5,000 cPs
- Foam: All-purpose foam hand soaps and antibacterial foam soaps containing PCMX and/or Triclosan

© 2025 Bradley

P.O. Box 309, Menomonee Falls, WI 53052-0309

800 BRADLEY (800 272 3539) +1 262 251 6000







[bradleycorp.com](http://bradleycorp.com)



A WATTS Brand

6-3300

## Verge™ Deck-Mounted Soap Dispenser – Metro Series

<b>Model</b>	
6-3300 Verge Deck-Mounted Soap Dispenser – Metro Series	
<b>Required Selections</b> (must select one from each category)	
<b>Activation Type</b> (select one)	
R	Infrared Sensor Operation
<b>Soap Type</b> (select one)	
F	Foam
L	Liquid
<b>Fill System</b> (select one)	
T	Single (Top fill at spout)
M	<a href="#">Multi-Feed (Shared Tank, Top-Fill Port)</a>
<b>Finish Type</b> (select one)	
PC	 Polished Chrome
BB	 Brushed Black Stainless
BS	 Brushed Stainless
BZ	 Brushed Bronze
BR	 Brushed Brass
BN	 Brushed Nickel
<b>Power Supply</b> (select one)	
A14-029	AC Adapter - Electrical Plug Type B
A14-030	Battery Pack (includes 4x D-cell batteries)
NONE	No Power Supply Provided – must purchase A14-031 separately***

Additional Parts for Purchase (Purchased Separately)	
Feature	Part Number
*** AC Adapter Splitter Assembly accommodates up to 4 devices when desiring a combination of multiple devices (faucet, soap, & multi-feed soap tank assembly) and/or stations. (Electrical Plug Type B)	A14-031
Multi-Feed Soap Tank Assembly	6-SOAP-MFT

Verify all rough-in dimensions prior to installation.  
Consult local and national codes. Conformity and compliance to  
local and national codes is the responsibility of the installer.



A WATTS Brand

## Verge™ Deck-Mounted Soap Dispenser – Metro Series

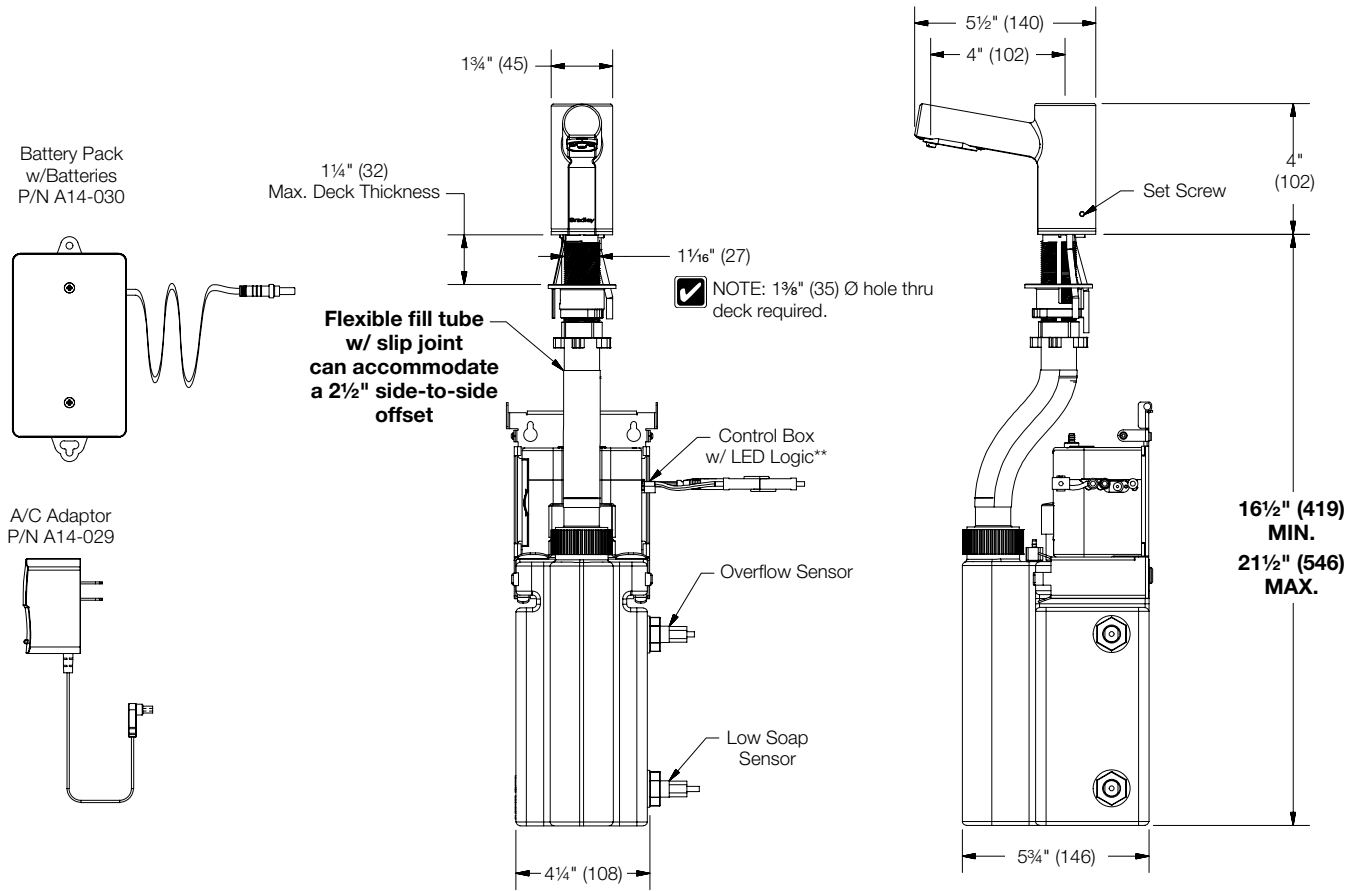
6-3300

### Dimensions – Single Top-Fill

(mm)



Note the dimension tolerances (bolded in the illustration below) before installation.  
Failure to adhere to these tolerances can cause the dispenser to work improperly.



Verify all rough-in dimensions prior to installation.  
Consult local and national codes. Conformity and compliance to local and national codes is the responsibility of the installer.

Page 4 of 6

2/13/2025

[View Latest Version](#)

This information is subject to change without notice.  
Bradley\_Soap\_Metro\_6-3300

© 2025 Bradley  
P.O. Box 309, Menomonee Falls, WI 53052-0309  
800 BRADLEY (800 272 3539) +1 262 251 6000  
bradleycorp.com

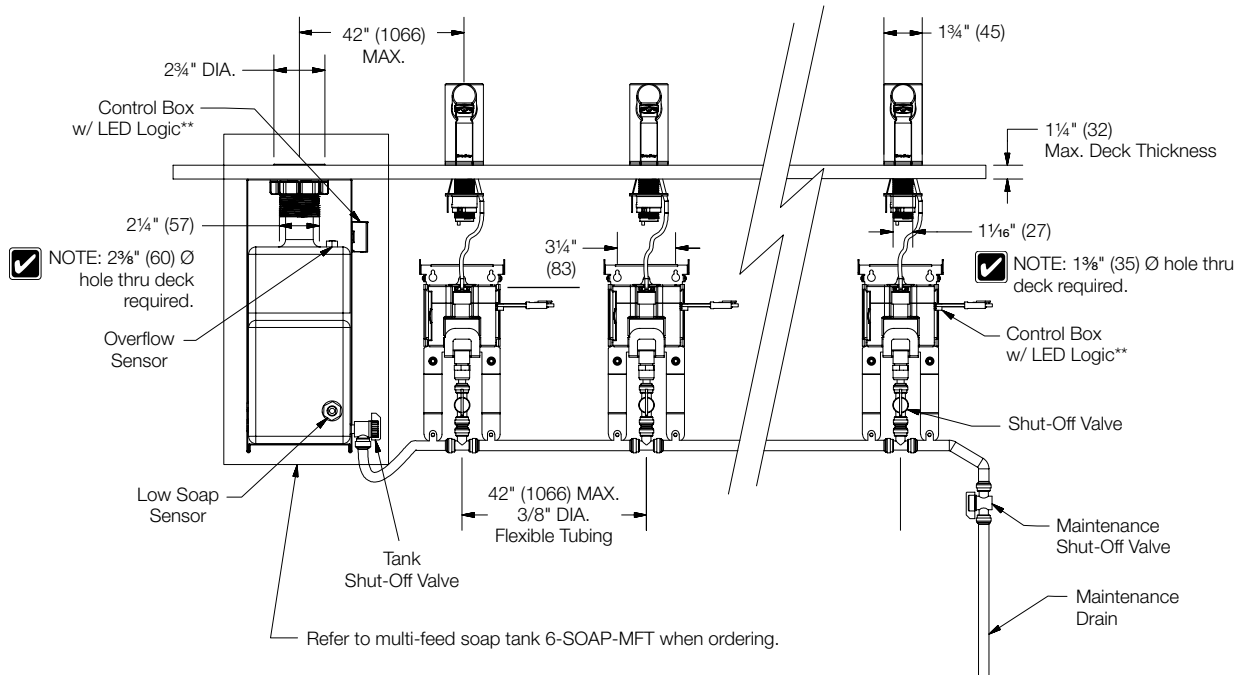


A WATTS Brand

# 6-3300 Verge™ Deck-Mounted Soap Dispenser – Metro Series

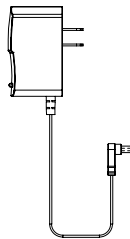
## Dimensions – Multi-Feed System - End Tank

(mm)

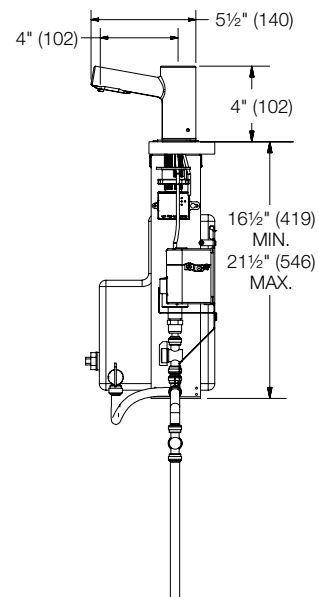
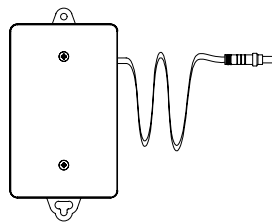


- ✓ \*\* NOTE: Battery pack or AC adaptor required.  
AC power source required to be within 54" (1371) of the control box.

A/C Adaptor  
P/N A14-029



Battery Pack  
w/Batteries  
P/N A14-030



Verify all rough-in dimensions prior to installation.  
Consult local and national codes. Conformity and compliance to local and national codes is the responsibility of the installer.

Page 5 of 6

2/13/2025

[View Latest Version](#)

This information is subject to change without notice.  
Bradley\_Soap\_Metro\_6-3300

© 2025 Bradley  
P.O. Box 309, Menomonee Falls, WI 53052-0309  
800 BRADLEY (800 272 3539) +1 262 251 6000  
bradleycorp.com



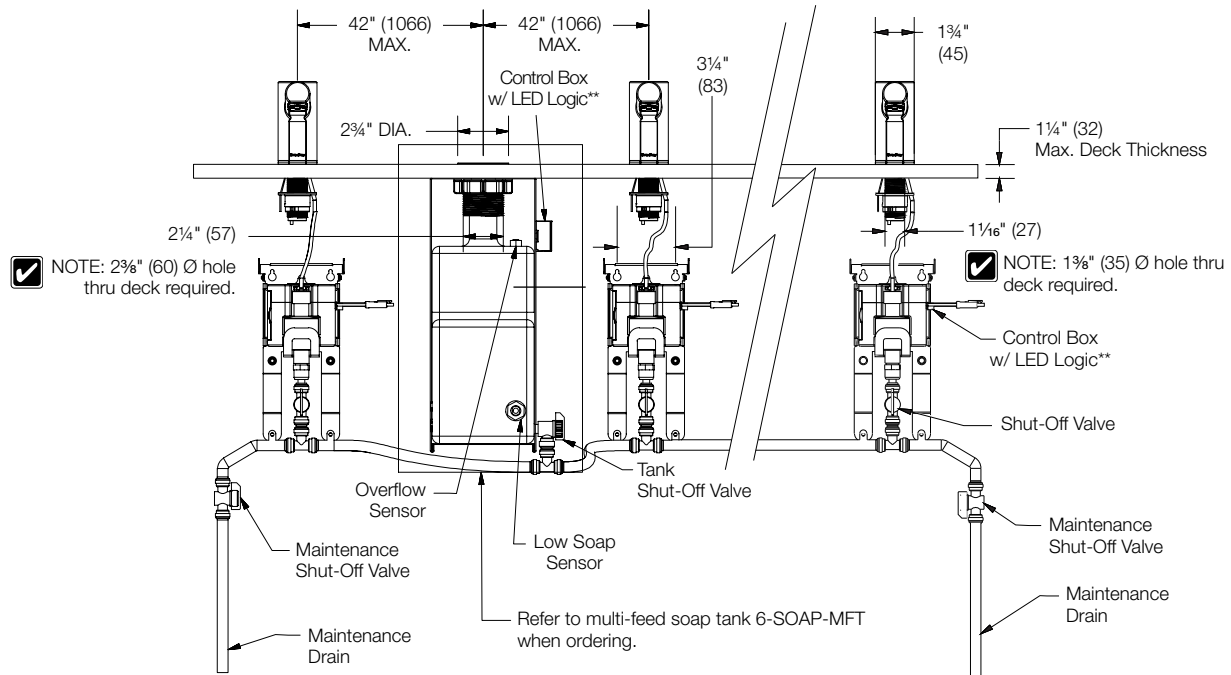
A WATTS Brand

6-3300

## Verge™ Deck-Mounted Soap Dispenser – Metro Series

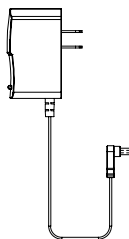
### Dimensions – Multi-Feed System - Mid Tank

(mm)

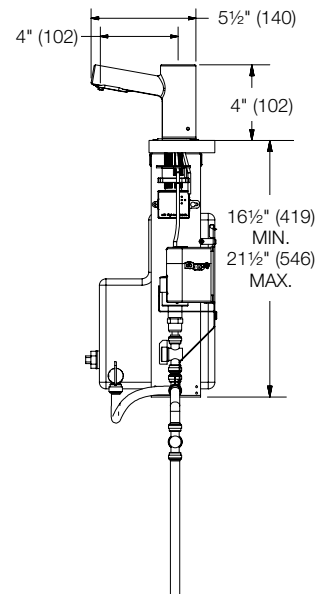
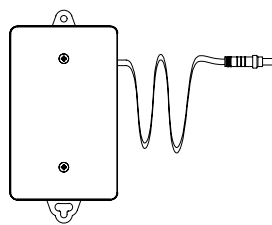


- ✓ \*\* NOTE: Battery pack or AC adaptor required.  
AC power source required to be within 54" (1371) of the control box.

A/C Adaptor  
P/N A14-029



Battery Pack  
w/Batteries  
P/N A14-030



Verify all rough-in dimensions prior to installation.  
Consult local and national codes. Conformity and compliance to  
local and national codes is the responsibility of the installer.

Page 6 of 6

2/13/2025

[View Latest Version](#)

This information is subject to change without notice.  
Bradley\_Soap\_Metro\_6-3300

© 2025 Bradley

P.O. Box 309, Menomonee Falls, WI 53052-0309  
800 BRADLEY (800 272 3539) +1 262 251 6000  
bradleycorp.com