

WASHBAR[®] SOLUTIONS



CLEAN. RINSE. DRY.



ALL-IN-ONE

Commercial Washrooms. Brought to Life.





Elegance and Performance Brought to Life.

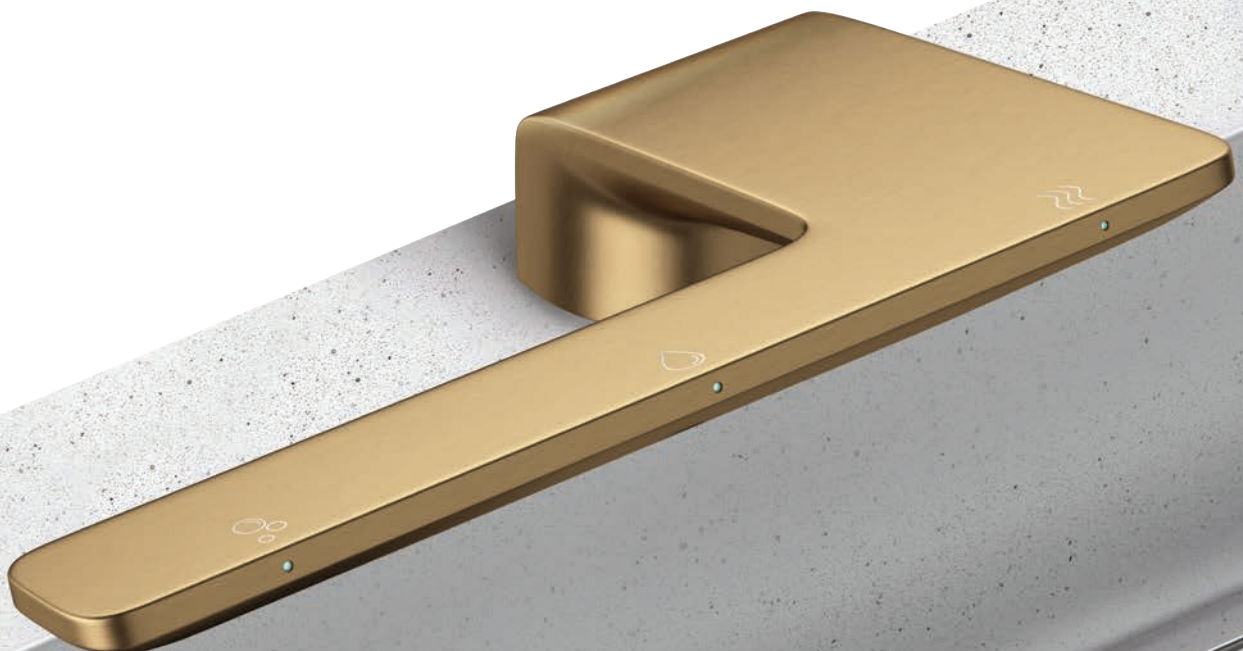
Introducing Bradley's Award-Winning WashBar® Technology

From the inventor of all-in-one sink systems comes the WashBar. Providing a completely touchless handwashing experience, the WashBar houses soap, water and dryer in one intuitive and attractive unit. Thoughtfully designed to streamline the handwashing process, the WashBar transforms the washroom to a modern wash space free of clutter. With multiple shapes and finishes to choose from, this is the apex of commercial design brought to life.

Convenient handwashing. End soap and paper towel waste. Eliminate water splashing on users or dripping across the floor. Performance transformed.

This innovative solution for commercial washrooms is ADA compliant making it perfect for:

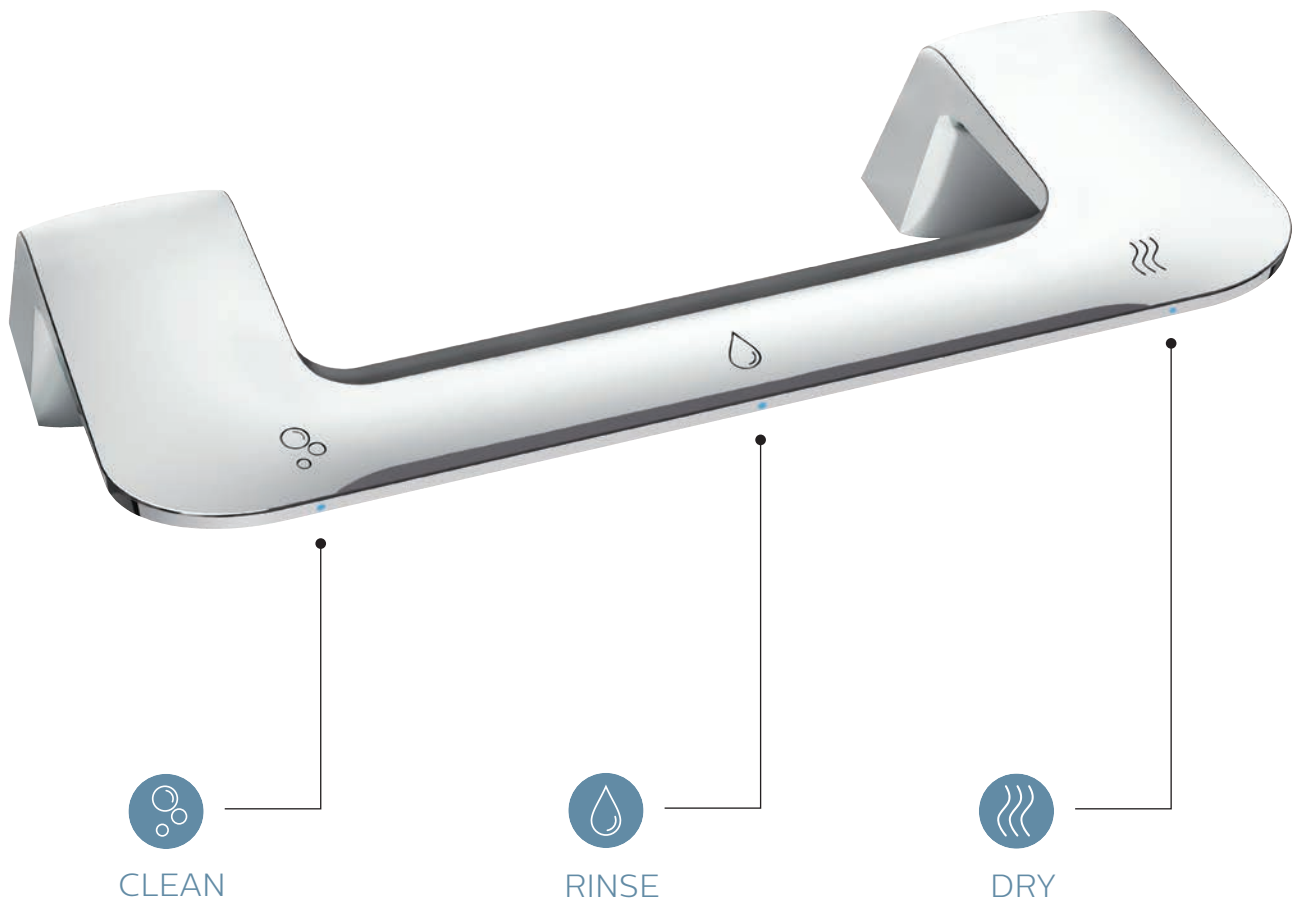
- Aquariums and Museums
- Banks and Credit Unions
- Colleges and Universities
- Entertainment and Amusement Centers
- Healthcare and Office Buildings
- Restaurant and Retail Locations



All-in-One, Touch-Free WashBar

Built-in Smart Technology

All the fundamentals of handwashing have been designed into our cutting-edge WashBar with care. The single piece, multifunction, chrome plated fixture provides convenience and safety by keeping water off the floor. Easy-to-identify icons orient and guide the user and LED lights change from blue to green when a function is activated. The clean, rinse, and dry functions operate independently and will not accidentally activate their neighboring function. The WashBar transforms the handwashing experience.



WashBar Advantage: Soap+Water+Dryer



Liquid or foam soap

Low level LED indicator

1 gallon (3.8 L) soap container
requires fewer refills and saves
on maintenance

No soap tank to clean or worry
about being contaminated



0.5 GPM (1.9 LPM)

Ultra-high efficient 0.35 GPM
(1.3 LPM) option available
for sustainable applications



12-15 second dry time

Heated air stream for ultimate comfort

Adjustable speed motor for faster
or quieter hand drying (64-76 dB)

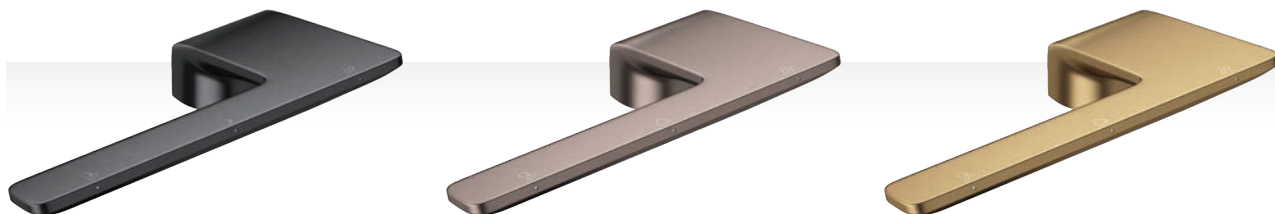
96% less expensive than
paper towels



NEW

Three designs in six gorgeous finishes give you options to create beautiful, functional spaces. **Finishes available early 2021!**

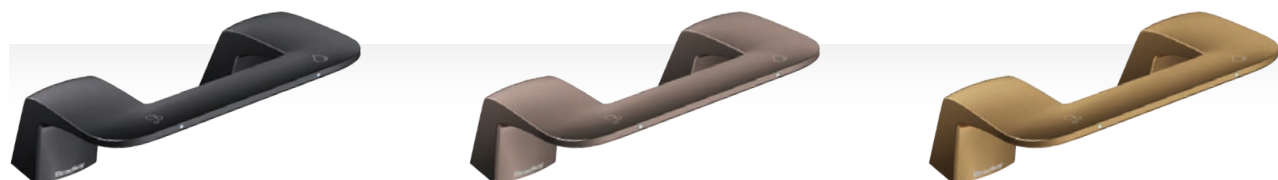
NEXT GENERATION WASHBAR



WASHBAR



WASHBAR DUO

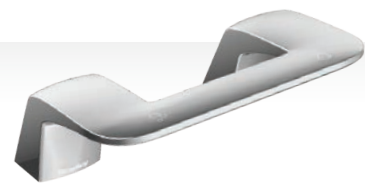
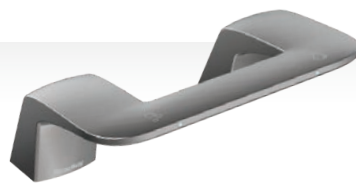
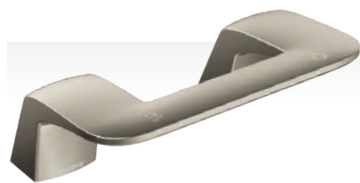


BRUSHED BLACK STAINLESS

BRUSHED BRONZE

BRUSHED BRASS





BRUSHED NICKEL

BRUSHED STAINLESS

POLISHED CHROME

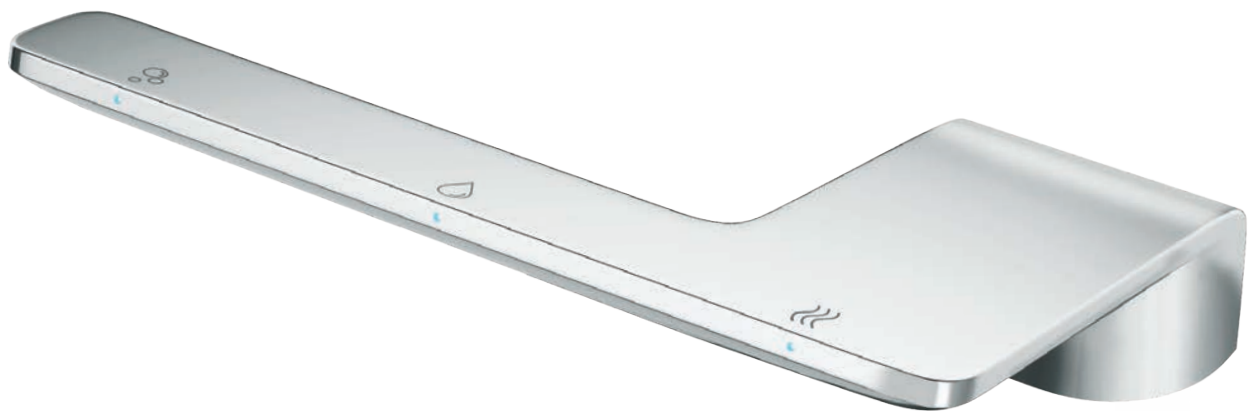


NEW

Introducing Next Generation WashBar

Cutting-edge handwashing takes shape.

The award-winning all-in-one WashBar now comes in an ultra-modern design to make a statement in upscale commercial restrooms. The next generation WashBar raises your restroom to new heights by providing touch-free soap, water and drying in an edgy new design for an unforgettable handwashing experience. The thin L-shape seems to float above the sink for a striking and innovative aesthetic, and a single connection point creates more open space for cleaning.



- Eliminates the cost and mess of paper towels
- Icons and LED lights to visually orient users
- Smart sensor technology eliminates false activations
- WashBar and bowl work together to keep water in the basin
- Captures soap and water activations for maintenance planning

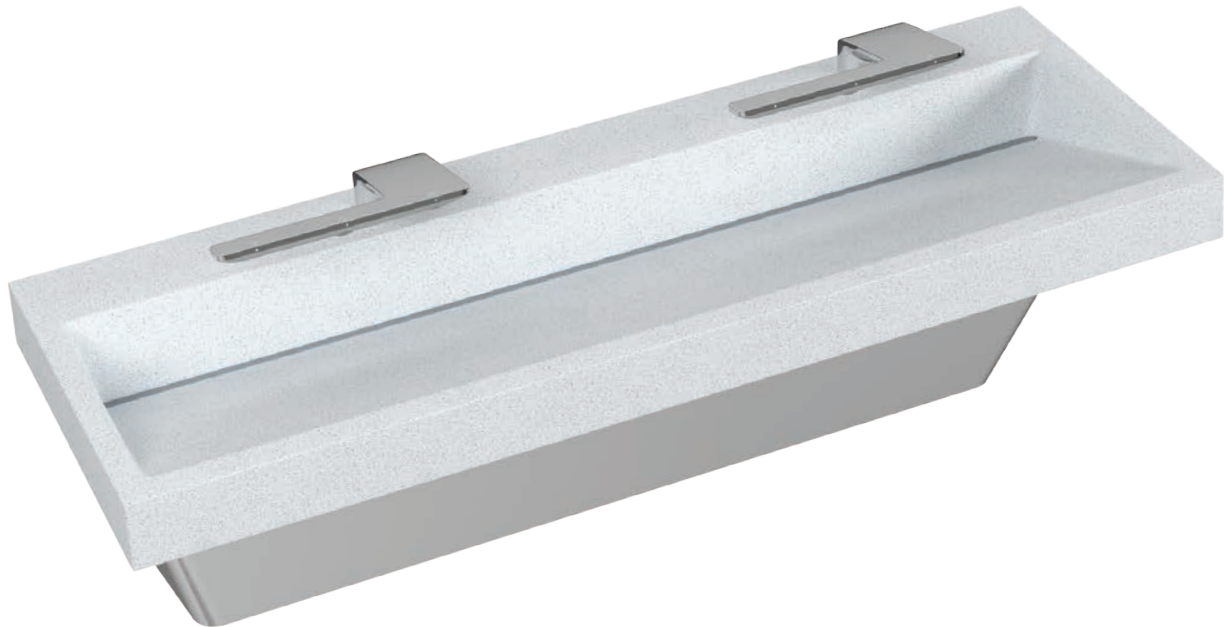


Verge® with WashBar

Sleek, Cast-Formed Basins in Natural Quartz

Made with Evero® Natural Quartz, the Verge® wash basin is cast-molded as one piece, and delivered to your project as a complete fixture to assure quality craftsmanship. Sleek, elegant and refined, the Verge was designed with architects and interior designers in mind.

The Verge basin has been engineered to work in harmony with the WashBar dryer keeping water in the basin and floors dry and safe for users.



The Elegance of Quartz with the Durability of Granite

Inspired by nature, Evero is the first and only quartz material that is cast-formed with no fabrication or seams. It is non-porous, completely seamless, and easy to clean and maintain. Virtually maintenance-free, Evero provides a refined look that will last a lifetime.

GREENGUARD Certified products are certified to GREENGUARD standards for low chemical emissions into indoor air during product usage. For more information, visit ul.com/gg.





OmniDeck™ with WashBar

Beautiful, Customized Solid-Surface Basins with Personal Space

OmniDeck with WashBar offers a versatile, Terreon® solid surface deck with the all-in-one WashBar. This handwashing solution provides personal space with up to four individual bowls. Placement of the bowls, size of front and side aprons and optional backsplash can all be tailored to meet your design requirements.

The OmniDeck basins have been designed work in harmony with the WashBar dryer keeping water in the basin and not on the floor providing a cleaner safer handwashing experience.



Terreon®

Refined Seamless Performance

Terreon solid surface is made to last, but when needed, can easily be repaired and renewed, thus minimizing the need for replacement or disposal. Terreon is a nonporous material which means it will not support the growth of mold, mildew or bacteria. Terreon is certified to meet the highest industry quality and performance standards for solid surface materials.

Terreon® solid surface material has achieved GREENGUARD GOLD Certification.





OmniDeck in Alpine White
with WashBar in Polished Chrome

WashBar with Undermount Basin

Design without Limits

The elegance and simplicity of the WashBar can now be used with a complex deck design or special deck material. Pair the WashBar with a Terreon solid surface or Evero natural quartz cast-formed undermount basin to the deck or countertop of your choice. From granite to quartz to concrete, you can have it all to match your specific design goals.



Package includes WashBar (soap, faucet and dryer platforms), basin and optional access panel.



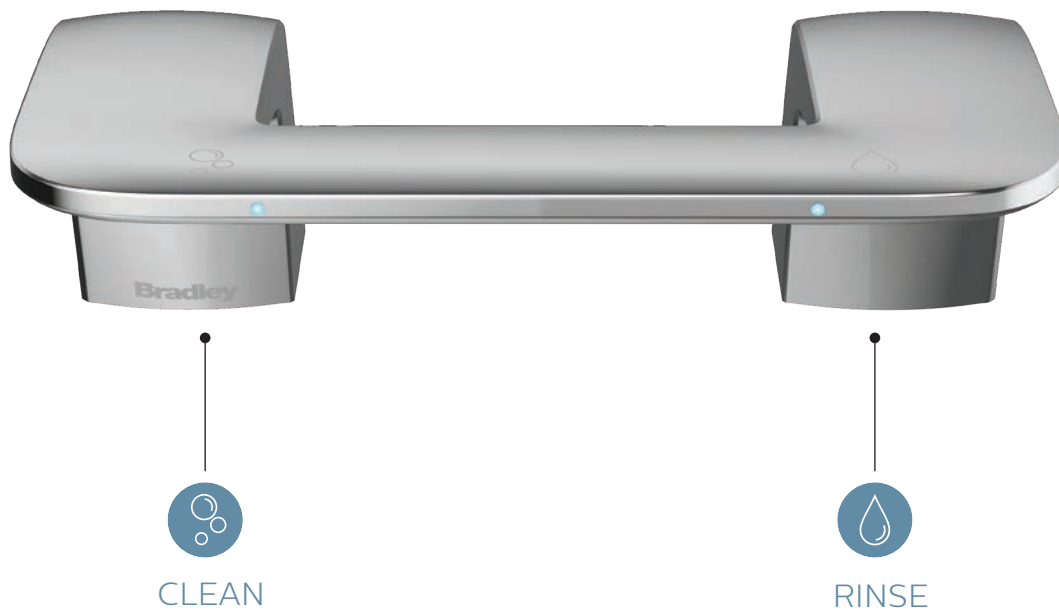
Undermount Basin in Designer White
with WashBar in Polished Chrome

WashBar Duo

Simple and Sophisticated

Bradley's award-winning WashBar is now available as a 'Duo' with soap and faucet in a single fixture. Enjoy all the same soap and water advantages of the WashBar while keeping your commitment to paper contracts or preference of hand dryers.

The Duo is available with the Verge LVQ basin in Evero natural quartz, OmniDeck 5010 and Express GLX/TLX Series in Terreon solid surface, or as a stand alone unit.





Verge in Polar Ice with
WashBar Duo in Polished Chrome

NEW Options Available

Matte Black Powder Coated Stainless Steel Access Panel

Provides added design element for more customization.



Slotted Drain Cap

Vandal resistant and provides greater ease in cleaning the trench drain.



Smart Never Looked So Good

The all-in-one, touchless WashBar is the industry's best, bar none. Sleek and sophisticated, this award-winning product creates a handwashing experience that simply can't be touched. With clean, rinse and dry functionality housed in a single component, the WashBar creates an attractive, intuitive, touchless handwashing experience in a groundbreaking and engaging design.

The all-in-one WashBar is the smart solution you've been waiting for.





SAFE

No more slipping on water
dripped on the floor



CLEAN

No more paper towel
waste on the floor



COMFORTABLE & ACCESSIBLE

Everything is within
reach – design allows
easier access for children
and wheelchair users



HANDWASHING & DRYING | ACCESSORIES | PARTITIONS | LOCKERS

bradleycorp.com/Washbar



bradleycorp.com
800 BRADLEY +1 262 251 6000
W142 N9101 Fountain Boulevard
Menomonee Falls, WI USA 53051

4268-2-1020

