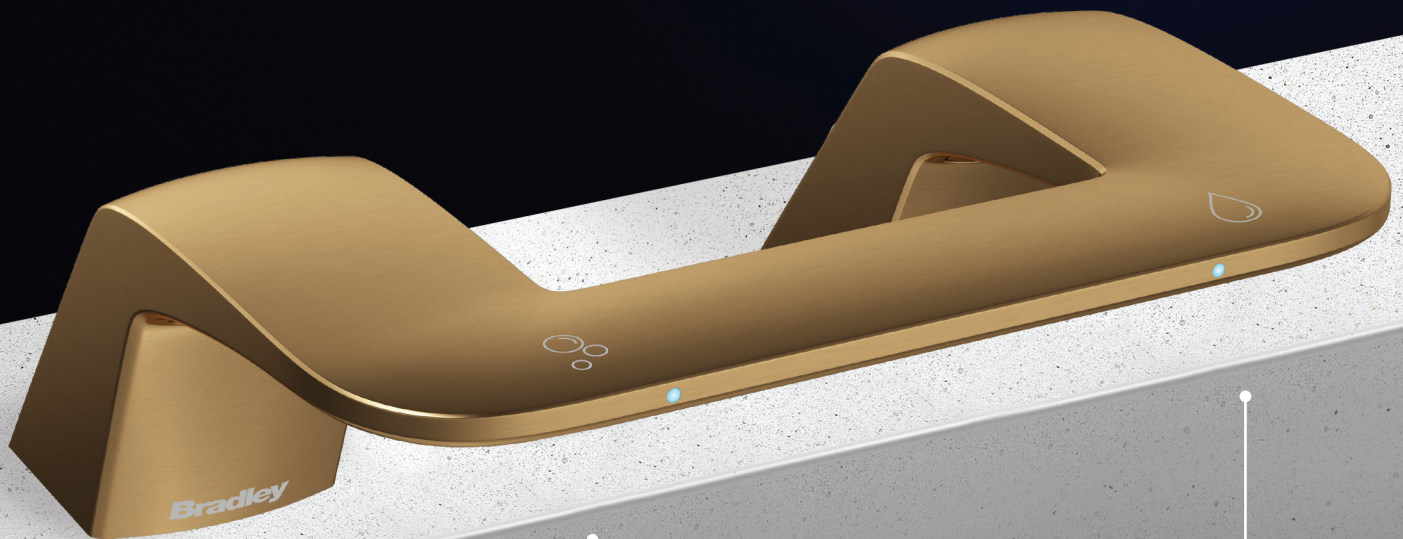


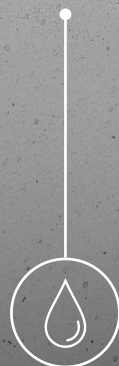
WASHBAR® DUO

Bradley's award-winning WashBar® is now available as a 'Duo' with soap and faucet in a single fixture, providing a sleek upscale look to the restroom.

Enjoy all the benefits of the WashBar while keeping your commitment to paper contracts or preference of hand dryers.



CLEAN



RINSE



Commercial Washrooms. Brought to life.

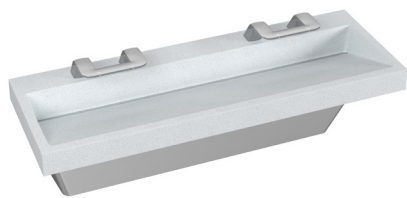
bradleycorp.com/washbar

SIMPLE AND SOPHISTICATED

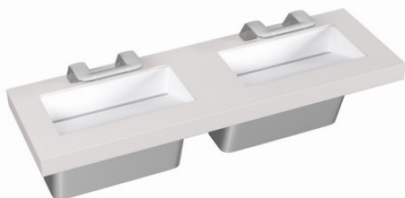
The **NEW** WashBar Duo offers touch-free soap and water in one convenient fixture, eliminating clutter on the deck. Enjoy all the same soap and water advantages as the all-in-one WashBar:

- Icons and LED lights to visually orient users
- Adjustable LED light brightness
- Smart sensor technology eliminates false activations
- Gallon soap capacity to reduce the number of replacements
- Captures soap and water activations for maintenance planning
- Cleaning mode for easy cleaning

The new Duo is available with the Verge® LVA basin in Evero® natural quartz, OmniDeck™ 3010 and Express® GLX and TLX Series Lavatory Systems in Terreon® solid surface, or as a stand alone unit.



Verge LVA Series with WashBar Duo



OmniDeck with WashBar Duo



Express GLX Series with WashBar Duo



Express TLX Series with WashBar Duo

AVAILABLE IN SIX BEAUTIFUL FINISHES



Brushed
Black
Stainless



Brushed
Bronze



Brushed
Brass



Brushed
Nickel

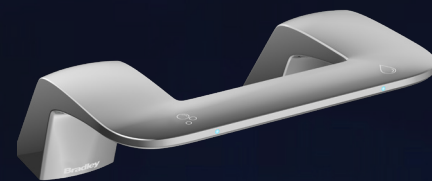


Brushed
Stainless



Polished
Chrome

WASHBAR DUO FEATURES



CLEAN

Touch-free activation

Liquid or foam soap

Gallon (3.8 L)
soap capacity

Low level LED indicator

Simply replace soap tank,
no cleaning or refilling



RINSE

Touch-free activation

0.5 GPM (1.9 LPM)

Ultra-high efficient
0.35 GPM (1.3 LPM)
option available for
sustainable applications



Commercial Washrooms. Brought to Life.

HANDWASHING & DRYING | ACCESSORIES | PARTITIONS | LOCKERS

bradleycorp.com

800 BRADLEY +1 262 251 6000
W142 N9101 Fountain Boulevard
Menomonee Falls, WI USA 53051

4289-0321