



A WATTS Brand

# 5961 & 5961-11

## Combination Unit – Seat Cover Dispenser/Dual Roll Tissue Dispenser w/ Waste Receptacle

### Model 5961 – Recessed **Bradex**® Model 5961-11 – Surface-Mounted

#### Key Features

- All-in-one, space saving unit featuring a toilet seat cover dispenser, waste receptacle, and toilet tissue dispenser
- Fully constructed out of 18 and 22 gauge Type 304 stainless steel for increased durability
- Both mounting styles are ADA compliant and allow for optional grab bar mounting above the unit (grab bars must be ordered separately)

#### Product Materials

**CABINET:** 22 gauge stainless steel with exposed surfaces in architectural satin finish. Welded construction with burr-free edges.

**FLANGE:** 22 gauge stainless steel with exposed surfaces in architectural satin finish. One-piece seamless construction, 1" wide with ¼" return.

**DOOR:** 18 gauge stainless steel with full-length piano hinge and tumbler lock keyed like other Bradley units.

**PUSH FLAP DOOR:** 18 gauge stainless steel with exposed surfaces in architectural satin finish. Self-closing, with heavy-duty stainless steel piano hinge.

**WASTE RECEPTACLE:** Stainless steel. Capacity of .46 gal.

#### Capacity

Toilet Tissue Dispensers — Two standard size rolls.

#### Operation

Hinged access door permits servicing of both seat cover and waste from the same side.

#### Installation

Verify all rough-in dimensions prior to installation. Requires rough wall opening 26⅞" W x 12¼" H x 4" D. Secure with mounting screws (not included) at holes provided.

#### Guide Specification

Recessed combination unit shall include toilet seat cover dispenser, dual standard size toilet tissue dispensers, and napkin disposal, and be fabricated of stainless steel with seamless exposed surfaces in satin finish. Doors shall be 18 gauge, 304 stainless steel, with piano hinge and tumbler locks.

**Overall dimensions: 28" W x 14" H x 3.87" D.**



Model 5961



Model 5961-11

#### Product Compliance

##### Complies with

- ICC ANSI A117.1, Citation 609.3



- ☒ Consult local and national accessibility codes for proper installation guidelines.
- ☒ Conformity and compliance to local and national codes is the responsibility of the installer.

Orders composed of products indicated as **Bradex**® will be available to ship in three days after receipt of order at the factory. There is no pricing penalty for this service from Bradley.

Page 1 of 2

1/22/2024

[View Latest Version](#)

This information is subject to change without notice.

Bradley\_CombiDispenser\_5961\_11

© 2024 Bradley  
P.O. Box 309, Menomonee Falls, WI 53052-0309  
800 BRADLEY (800 272 3539) +1 262 251 6000  
bradleycorp.com



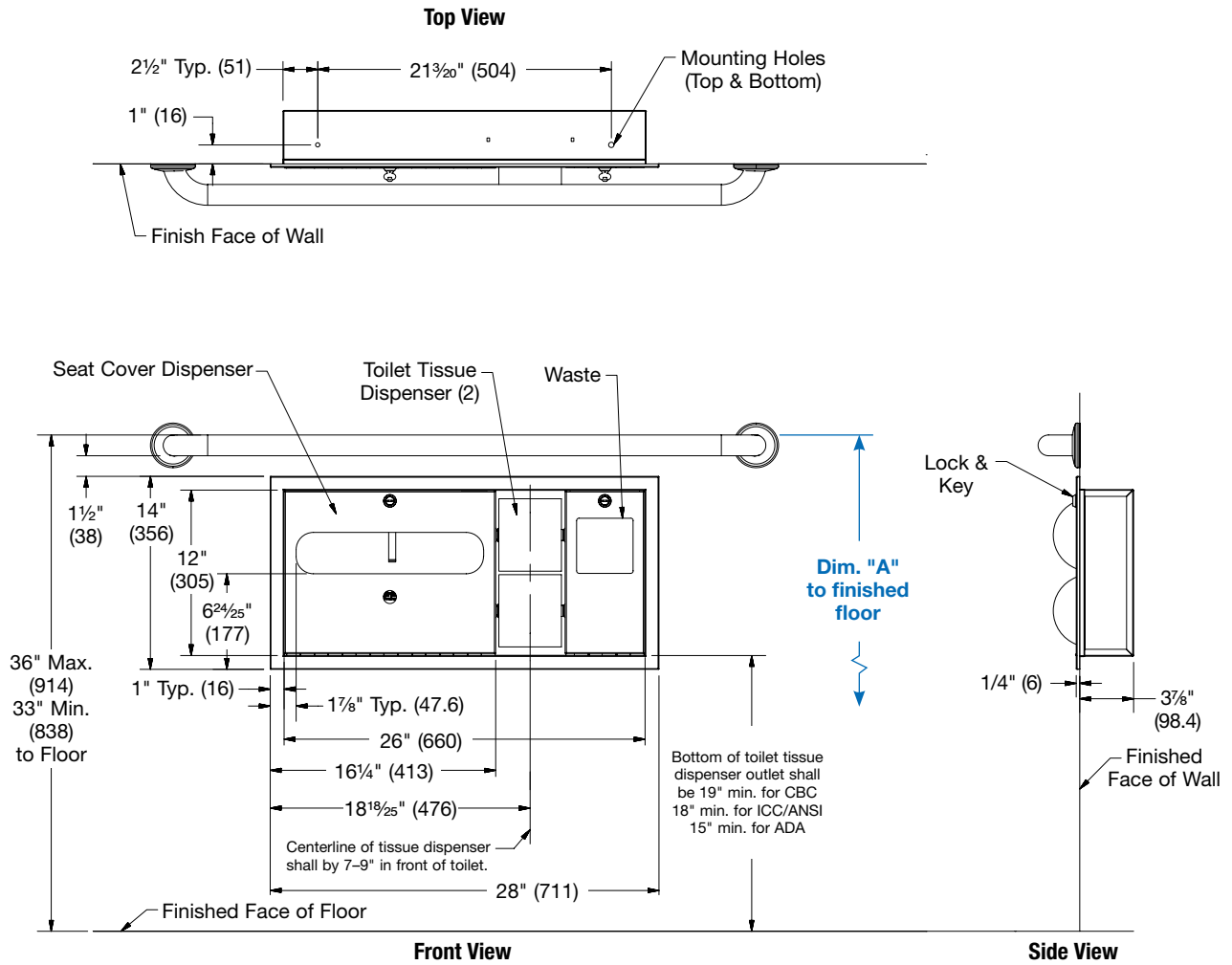
A WATTS Brand

# 5961 & 5961-11

## Combination Unit – Seat Cover Dispenser/Dual Roll Tissue Dispenser w/ Waste Receptacle

### Dimensions

☒ Dimensions shown for Model 5961.



☒ Grab bars must be ordered separately. To learn more about Bradley's wide variety of grab bar configurations, visit [www.bradleycorp.com](http://www.bradleycorp.com).

Dim. "A" Key Surface:	For Dim. "A"	Top of Rough Wall Opening	Bottom of Rough Wall Opening	For Bottom Toilet Paper Opening Lower Lip @ Dim. "A"
Top of 1 1/2" grab bar (installed with 1 1/2" clearance) to finished floor	36" (914)	32 1/8" (816)	19 7/8" (504.8)	20" (508)

**Rough Wall Opening for Model 5961: 26 3/8" W x 12 1/4" H x 4" D**

**Overall Dimensions for Model 5962-11: 28" W x 14" H x 4 1/8" D**

Orders composed of products indicated as **Bradex®** will be available to ship in three days after receipt of order at the factory. There is no pricing penalty for this service from Bradley.

Page 2 of 2

1/22/2024

[View Latest Version](#)

This information is subject to change without notice.

Bradley\_CombiDispenser\_5961\_11

© 2024 Bradley  
P.O. Box 309, Menomonee Falls, WI 53052-0309  
800 BRADLEY (800 272 3539) +1 262 251 6000  
bradleycorp.com