

BRADLEY PARTITIONS

Add style, privacy and durability to any commercial restroom



Phenolic NEW DESIGN!

Stainless Steel

Bradmar™ Solid Plastic

Commercial Washrooms. Brought to Life.



Bradley Partitions

Offering a wide selection of the most innovative product materials available, Bradley partitions are suited for a variety of applications and environments. The quality materials used provide key features for architects and specifiers, such as aesthetic appeal, vandal resistance, low cost and competitive warranties. From high-performance material options to creative style solutions, Bradley partitions provide architects smart, economical choices.

Materials

Bradley has a large green product offering of restroom partition materials and all are GREENGUARD Certified as low emitting materials. All materials also offer privacy options.



Stainless Steel

40% pre-consumer, 25% post-consumer recycled stainless steel, ideal for heavy traffic.



Bradmar™ Solid Plastic

Fabricated from an advanced formula of at least 30% pre-consumer recycled high-density polyethylene (HDPE).



Phenolic Core

20% pre-consumer recycled phenolic core, ideal for heavy traffic.





Mounting Styles

Bradley's wide variety of partition mounting styles meet the design needs of every application, from airports and sports entertainment complexes to restaurants, fitness centers and schools. Whether easy maintenance, economy, durability, added support, privacy, design aesthetic or "all of the above" is driving the decision, Bradley offers a style most suited to your building's restrooms.



Sentinel™ Floor-Mounted, Overhead Braced Series 400

This style provides the most economical solution for heavy traffic and vandalism-prone areas. Because it requires no special floor or ceiling construction, installation is easy in new construction or existing buildings. The anti-grip head rail provides outstanding rigidity. **NEW! Extra-height doors and panels available.**



Floor-Braced Series 500

Floor-braced partitions complement design with functional performance. Recommended for buildings with high ceilings, it enhances the effect of spaciousness. A minimum three inch concrete floor for anchoring is required. This style not available in Bradmar solid plastic.



Ceiling Hung Series 600

Ceiling hung partitions are ideal for areas with low ceilings. Offering an area free from obstruction to allow for fast and easy maintenance, the system requires structural supports in the ceiling for maximum rigidity. Not recommended for ceiling heights over eight feet. Not available in Bradmar solid plastic.



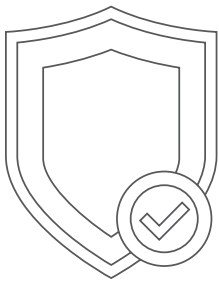
Floor-to-Ceiling Series 700

This style works well where additional support is required. Anchored at the floor and ceiling, this style offers the most stability. **NEW! Extra-height doors and panels available.**

Demand for greater privacy in public restrooms has been a long time coming.

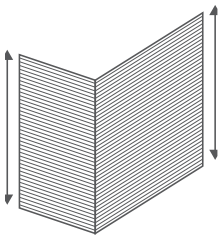
What is privacy? For many it brings to mind 'a retreat, seclusion, solitude'. While most might not associate those terms with public restrooms, there is no question that privacy is becoming more important to everyone who uses those spaces. Taking cues from European influence, Bradley privacy partitions give owners and architects the options to create a comfortable, durable restroom retreat for users.

Almost half of Americans are uncomfortable or bothered by the small gap between doors and pilasters.



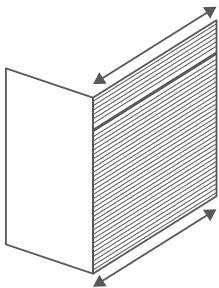
No-Site™ options

- Eliminates gaps between doors, pilasters and panels
- Integral No-Site design standard on phenolic partitions. Optional with Bradmar
- Full privacy height No-Site strips available for stainless steel
- Full privacy height and continuous hinges and brackets available for stainless steel and Bradmar



Extra-height doors and panels

- 72" (1829 mm) tall doors and panels mounted 6" (153 mm) AFF
- 69" (1753 mm) tall doors and panels mounted 9" (230 mm) AFF for ADA stalls
- Two mounting styles: floor-mounted overhead braced or floor-to-ceiling



Extra Depth panels

- Available in depths up to 84" (2134 mm)
- Available with extra-height stalls



69" (1753 mm)

72" (1829 mm)

9" (230 mm) AFF

6" (153 mm) AFF



Current ADA guidelines require the front partition and one side partition to provide toe clearance of at least 9" (230 mm) above the finished floor

Phenolic partitions with extra-height doors and panels



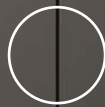
Phenolic partitions with integral No-Site
and extra-height and depth panels



Pre-installed threaded
inserts on doors and
pilasters speed up
hinge installation



Pre-drilled
indicator latch holes



Rabbeted edge on hinge and
latch side of the door provides
flush finish and full privacy



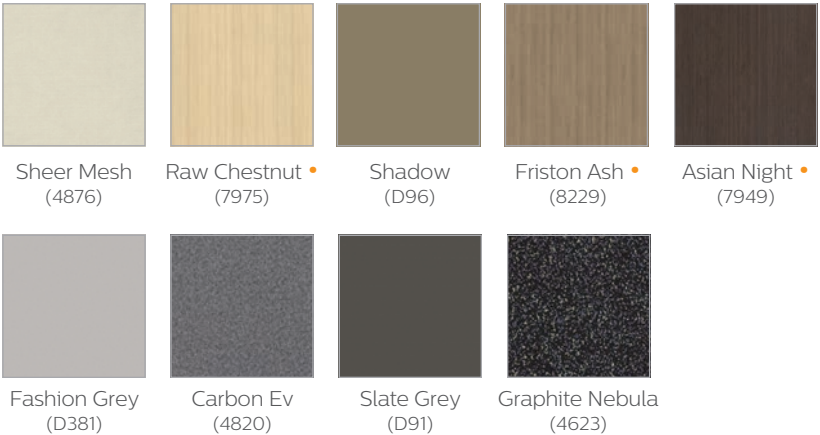
Phenolic Core Partitions NEW DESIGN!

Integral No-Site construction comes standard to eliminate gaps between doors and pilasters for maximum privacy. High heat and high-pressure molding of solid phenolic core material delivers impact resistance and superior strength. Available in a variety of new colors.

- Built-in No-Site design for high privacy
- Resists water, oil and bacteria, withstands wet and humid environments
- Impact and graffiti resistant: perfect for high traffic areas
- Extra-height doors and panels available for added privacy
- GREENGUARD Certified as a low emitting material



NEW! Phenolic Colors



- Any directional wood grain panel taller or deeper than 58" will run perpendicular to the direction throughout the rest of the partition design. If a panel depth or height exceeds 58", please review for pattern conflicts.

*Due to printing variances, the actual material color may differ.
Contact your local Bradley Representative for samples.*



Extra-height doors & panels are available for extra privacy

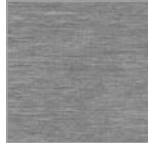
Stainless Steel Partitions

Bradley takes this popular look to the limit with seamless panels.

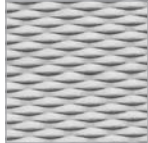
- Facing sheets of panels and doors integrally locked together
- Corners are welded smooth or adhered with a corner clip
- Finish wraps completely around the edges
- Extra-height doors and panels available for extra privacy
- GREENGUARD Gold Certified



Stainless Steel Textures



Satin



5WL Textured

The Permaseal™ Edge is available in Stainless Steel. The design locks facing metal sheets integrally together around the perimeter of the panel.

- Stronger than conventional crown molding construction
- 15-year warranty against rust-out — best in the industry
- No moisture penetration, no rust





No gaps between
doors and pilasters



Optional indicator latch

Integral hinge system

Hidden within the door cavity, this design combines the strength of HDPE with a 1/2" (13mm) two-piece nylon cam-action pin and 3/16" (5mm) stainless steel pin for the ultimate in reliability.



Bradmar with integral No-Site
and extra-height doors and panels

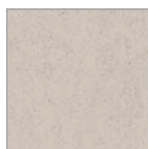
Bradmar Solid Plastic

Bradmar Partitions, Urinal and Sight Screens and Shower Dividers are fabricated from 30% pre-consumer recycled high density polyethylene (HDPE) with a variety of design options. Available with integral No-Site design to eliminate gaps between doors and pilasters to ensure privacy.

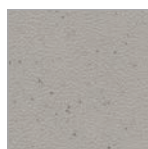
- Low maintenance and high vandal resistance
- Withstands wet and humid environments
- 15-year warranty — one of the industry's best
- Extra-height doors and panels available when additional privacy is needed
- Available in floor-mounted, overhead braced and floor-to-ceiling mounting styles
- Ideal for schools, theme parks, stadiums and arenas — any high-traffic restroom
- GREENGUARD Certified as a low emitting material



Standard Colors



Desert Stone
(S406)



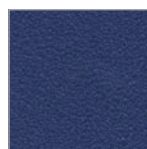
Canyon Granite
(M244)



Charcoal Gray
(S215)






Starry Night
(S225)



Deep Blue
(S203)

*Due to printing variances, the actual material color may differ.
Contact your local Bradley Representative for samples.*

Bradley Partitions Features

MATERIALS	PHENOLIC CORE	BRADMAR	STAINLESS STEEL
Mounting Style	400 Series 500 Series 600 Series 700 Series	400 Series 700 Series	400 Series 500 Series 600 Series 700 Series
Traffic	Heavy	Heavy	Heavy
Vandal Resistance	Highly durable Impact resistant Heavy-duty stainless steel hardware is standard	Graffiti easily wiped away with ordinary cleaners Dent-proof	Textured patterns resist scratches Buffing removes scratches from brushed finish
Environment	Dry Moderate Humid Wet	Dry Moderate Humid Wet	Dry Moderate
Aesthetics	9 standard colors Stainless steel brackets Edges: Solid black	5 standard colors Aluminum brackets Stainless steel shoes	Satin brushed & 5WL textured Texture or pattern wraps around edges Edges: Permaseal
 Door + Panel Height *	All stalls 72" (1829 mm) H, 6" (153 mm) AFF - OR - All stalls 69" (1753 mm) H, 9" (230 mm) AFF - OR - Combination 72" (1829 mm) H, 6" (153 mm) AFF stall with ADA 69" (1753 mm) H, 9" (230 mm) AFF stall	All stalls 72" (1829 mm) H, 6" (153 mm) AFF - OR - Combination 72" (1829 mm) H, 6" (153 mm) AFF stall with ADA 69" (1753 mm) H, 9" (230 mm) AFF stall	All stalls 72" (1829 mm) H, 6" (153 mm) AFF - OR - Combination 72" (1829 mm) H, 6" (153 mm) AFF stall with ADA 69" (1753 mm) H, 9" (230 mm) AFF stall
 Stacked Panel Design*	63" (1601 mm) or 75" (1905 mm) to face depending on color	58" (1474 mm) to face	61" (1550 mm) to face
 Privacy Options	Standard	Integral No-Site design OR Continuous hinge Continuous bracket	No-Site strips Continuous hinge Continuous bracket
Applications	Outdoor facilities Parks Pools Shower rooms	Schools Parks Retail	Airports Stadiums Public rest stops
Warranty	3 years against delamination and discoloration	15 years against rust, delamination or breakage of any plastic components	15 years against rust-out 5 years: chrome plated Zamac hardware
----- Lifetime warranty on stainless steel hardware for all materials			

*Available in floor-mounted overhead braced and floor-to-ceiling mounting configurations.





Commercial Washrooms. Brought to Life.

HANDWASHING & DRYING | ACCESSORIES | PARTITIONS | LOCKERS

bradleycorp.com

800.BRADLEY | 262.251.6000
W142 N9101 Fountain Boulevard
Menomonee Falls, WI USA 53051

3788-3-1023