



A WATTS Brand

800 Series

Mounting Kits and Anchoring Devices

☒ Order one mounting kit per grab bar flange.

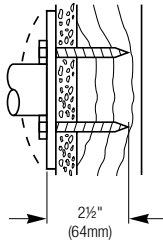
Concealed Mounting Kits

Stud Walls with Wood Supports

899-010

Material Included:

- ¼ x 2½" Plated Steel Hex Head Lag Bolts (2)

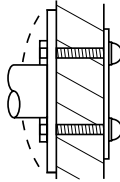


Partition Walls

899-011

Material Included:

- ¼-20 x 1½" Plated Steel Hex Head Machine Screws (2)
- Cap Nuts (2)
- Backing Plate (1)

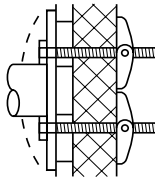


Panel Walls

899-012

Material Included:

- ¼-20 x 3" Plated Steel Hex Head Machine Screws (2)
- Toggle Nuts (2)

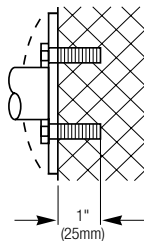


Masonry Walls

899-013

Material Included:

- ¼-20 x 1" Plated Steel Hex Head Machine Screws (2)
- ¼-20 Lead Anchors (2)



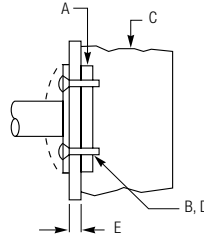
Metal Stud Wall Mounting Kits

899-014

(Concealed or Exposed)

Material Included:

- A. In-Wall Anchor Plate 899-015 (not included) Specify and order separately; see anchor plates in next column.
- B. #10 Sheet Metal Screws (furnished by others)
- C. Metal Stud
- D. ¼-20 x 1¼" Flat Head Machine Screws (2)*
- E. Wall Dimensions (to be furnished if over ¾").



* Included with Mounting Kit 899-014

In-Wall Anchor Plates

899-015

x Length (to 96")

Material:

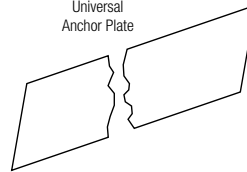
4" x ¼" Cold Rolled Steel – length as specified to 96"

NOTE: Separately order Mounting Kit 899-014 as required.

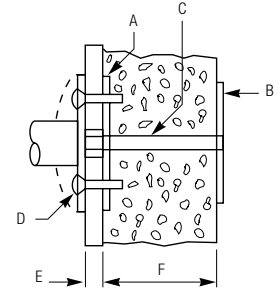
Installation:

- Fasten to studs before wall applied.
- Recess as required for flush finish wall application.
- To attach grab bar, drill #2 (.221 diameter) holes thru wallboard and anchor plate.
- Attach with ¼-20 x 1¼" plated phillips oval head rollock tapping screws.

Universal Anchor Plate



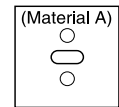
Block Wall Mounting Kits



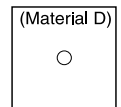
899-016

(Concealed or Exposed)

Front Anchor Plate



Back Anchor Plate



Material Included:

- A. Front Anchor Plate, 3" X 3" X ⅛" Cold Rolled Steel – center slot punched and 2 fastener holes pre-punched*
- B. ¼-20 x 1¼" Plated Phillips Flat Head Self Tapping Screws (2)*
- C. ⅜-16 steel zinc-plated tie rod with nut (1)*
- D. Back Anchor Plate, 3" x 3" x ⅜" Cold Rolled Steel – tapped for and including ⅜-16 stud and nut*
- E. Finished Wall Thickness (to be furnished if over ¾")
- F. Masonry Wall (thickness to be furnished)

* Included with Mounting Kit 899-016



A WATTS Brand

800 Series

Mounting Kits and Anchoring Devices

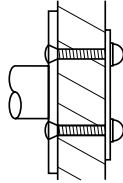
Exposed Mounting Kits

Partition Walls

899-021

Material Included:

- ¼-20 x 1½" Stainless Steel Phillips Oval Head Machine Screws (2)
- Cap Nuts (2)
- Backing Plate (1)

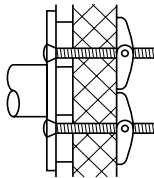


Panel Walls

899-022

Material Included:

- ¼-20 x 3" Stainless Steel Phillips Oval Head Machine Screws (2)
- Toggle Nuts (2)

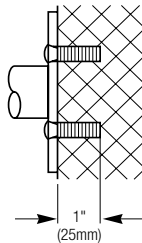


Masonry Walls

899-023

Material Included:

- ¼-20 x 1" Stainless Steel Phillips Oval Head Machine Screws (2)
- ¼-20 Lead Anchors (2)



Stud Walls

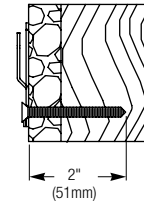
899-026

(Concealed or Exposed)

Material Included:

- #10 X 2" Zinc Plated Flat Head Wood Screws (4)

NOTE: For mirror mounting only. One (1) per H-hanger.



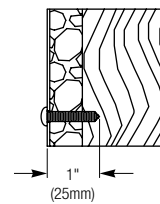
Stud Walls

899-027

(Concealed or Exposed)

Material Included:

- #10 X 1" Zinc Plated Pan Head Wood Screws (4)

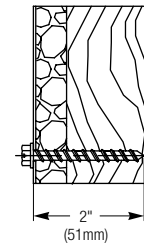


Stud Walls

899-028

(Exposed)

- ¼" X 2" Slotted Hex Washer Head (7)
- 18-8 Stainless Steel Sheet Metal



Stud Walls

899-029

(Exposed)

- ¼" X 2" Slotted Hex Washer Head (10)
- 18-8 Stainless Steel Sheet Metal

