



- Available in a 54" bowl size
- 9" deep bowl, designed for heavy-duty hand washing
- Reliable foot, air, or infrared activations, or TouchTime® mechanical metering

Specifications

Size and Capacity

Accommodates three users at a time. The classic sprayhead (non-sectional) is controlled by a foot rail, air activated pushbutton, an infrared sensor, or an electronic pushbutton or piezo switch. The operating water pressure range is 20–80 psi. Flow rates differ based on the model. Flow rate controlled by volume control valve.

Construction

Bowl Material

Precast Terrazzo: Composed of approximately 85% stone and 15% binder with steel reinforcing rods cast into the bowl. Polished and sealed with urethane resin.

Pedestals

Pedestals consist of die-formed legs, upper braces, scuff bases, and panels: legs are 14 gauge galvanized steel; upper braces are heavy gauge steel coated with a rust preventative; pedestal panels and scuff bases are stainless steel with a #4 finish.

Standard Equipment

Valves and Fittings

In addition to bowl and pedestal, the following valves and fittings are standard: sprayhead with stainless steel supporting tube, restraining bracket, and bowl gasket; spud with locknut and beehive strainer; sprayhead supply line; manual mixing valve; volume control valve; combination stop/strainer/check valves.

Activation Controls

Foot

Each press of the foot rail mechanically actuates a hold-open valve with slow closing upon release of foot pressure. Foot rail activates a flow of tempered water at a rate of 0.75 gpm (2.8 Lpm) from the classic non-sectional sprayhead.

Air

Each pushbutton pneumatically actuates a non-hold-open, air metering, single-temperature valve with field adjustable timing from 0–45 seconds. Factory preset at 11 seconds. Each pushbutton activates a flow of tempered water from the classic non-sectional sprayhead. Pushbutton requires less than five pounds of pressure.

Infrared

Hands placed within the bowl are detected by an infrared sensor module, which activates a flow of tempered water at a rate of 0.75 gpm (2.8 Lpm) from the classic non-sectional sprayhead. Shut-off is automatic seven seconds after hands are removed from the detection area. The infrared sensor module uses a conical-shaped transmitting beam, having a detection area adapted to, but not exceeding, the bowl perimeter. The detection range projects 6–9 inches forward at a 30° angle to each side and reaches 15° below horizontal. The infrared sensor is not affected by varying color tones or darkness. Direct sunlight or bright washroom lights will not activate the system. Infrared models also include solenoid valves and a 12V plug-in adapter as standard equipment:

- Solenoid – 12VDC, 3/4" NPT. Few moving parts, and resistant to most chemicals, minerals, and impurities often present in municipal water supplies.
- Low-Voltage UL/CSA listed 120VAC/12VDC plug-in adapter. Plugs into a standard GFCI protected electrical outlet. Location of plug-in adapter per local electrical code.



WF2613 - With Foot Control

WF2613 - With TouchTime®

TouchTime® Mechanical Metering

Each low-voltage, mechanical pushbutton or piezo switch actuates a non-hold-open, slow-closing, anti-hammer solenoid valve that is timed from an electronic potted assembly. Each pushbutton activates a flow of tempered water at a rate of 0.15 gpc (0.57 Lpc) from the classic non-sectional sprayhead. TouchTime controls water flow at all stations through the use of solid state, digital circuitry. Timing is factory set at 11 second run time but is field adjustable to pre-set timeout periods and optional auto-flush function. The 24 hour flush function will activate water flow for a period of 60 seconds any time there has been no activation within the past 24 hours. Pushbutton and piezo switch requires less than five pounds of pressure.

Product Compliance

Listed by IAPMO R&T to

- Uniform Plumbing Code (UPC)
- National Plumbing Code of Canada
- International Plumbing Code (IPC)
- IGC 156 and the requirements of CSA B45.8/IAPMO Z403 and ASME A112.18.1/CSA B125.1



Listed by NSF International to

- NSF/ANSI 372





<b>Standard Selections</b> (Must select one from each category)	
<b>Drain Type (select one)</b>	
<b>A</b> Off-line vent with supplies from below	<b>H</b> Centrally rising vent with supplies from below
<b>B</b> Centrally rising vent with supplies from above	<b>O</b> Off-line vent with supplies from above
<b>Mounting Height Type (select one)</b>	
<b>STD</b> Standard Height	<b>JUV</b> Juvenile Height
<b>Sprayhead Type (select one)</b>	
<b>CLC</b> Classic Sprayhead (entire sprayhead activates)	
<b>Activation Type (select one)</b>	
<b>F</b> Foot	<b>TTPA</b> TouchTime Pushbutton***
<b>IRP</b> Infrared	<b>TTPB</b> TouchTime Piezo Switch****
<b>AST4</b> Air Pushbutton	
<b>Water Supply Type (select one)</b>	
<b>MMV</b> Manual Mixing Valve‡	<b>TMA</b> Thermostatic Mixing Valve
<b>Soap Dispenser (select one)</b>	
<b>PSD</b> Powdered Soap Dispenser	<b>MPSD</b> Metal-Clad Powdered Soap Disp.
<b>LSD</b> Liquid Soap Dispenser	<b>SA</b> Cube Adapter for Individual Soap Dispensers (dispensers sold separately)†
<b>MLSD</b> Metal-Clad Liquid Soap Dispenser	<b>NSD</b> No Soap Dispenser
<b>Terrazzo Bowl Color (select one)</b>	
<i>Standard Colors</i>	
<b>GRANITO</b> Granito (Beige)	<b>WHT-MARM</b> White Marmorite
<i>Premium Terrazzo Colors* (available at an additional charge)</i>	
<b>W-GRAY</b> Whisper Gray*	<b>D-ROSE</b> Dusty Rose*

<b>Optional Selections</b>	
<b>Shroud Type</b>	
<b>SH</b> Stainless Steel Shroud (Conceals Overhead Piping)*	
<b>NONE</b> No Shroud	
<i>NOTE: Floor to ceiling height is required; maximum height of 13 ft. 0 in. A height greater than the maximum height will be considered a special order.</i>	
<b>Support Tube Reinforcement Type</b>	
<b>TA</b> 1-1/2" Tie Pipe Assembly (not required when SH is selected) §	
<b>NONE</b> No Tie Pipe Assembly	
<b>Towel Dispenser Type</b>	
<b>CFTD</b> (2) C-Fold, Multi-Fold Dispenser	
<b>SFTD</b> (2) Single-Fold Dispenser	
<b>NONE</b> No Towel Dispenser	
<b>Hose Bibb Type</b>	
<b>HB</b> Hose Bibb**	
<b>NONE</b> No Hose Bibb	

\* Non-cancelable, not-returnable  
 \*\* Available with STD height only. Non-cancelable, non-returnable.  
 \*\*\* TTPA and TTPB require a low-voltage UL/CSA listed 120VAC/12VDC plug-in adapter.  
 † Towel Dispenser with SA soap option is non-cancelable and non-returnable.  
 § Required with drain A, drain O, and towel dispenser.  
 ‡ Not a temperature limiting device. Installer must provide an ASSE 1070 device where required per code.



# WF2613 Classic Corner Washfountain with 9" Deep Bowl

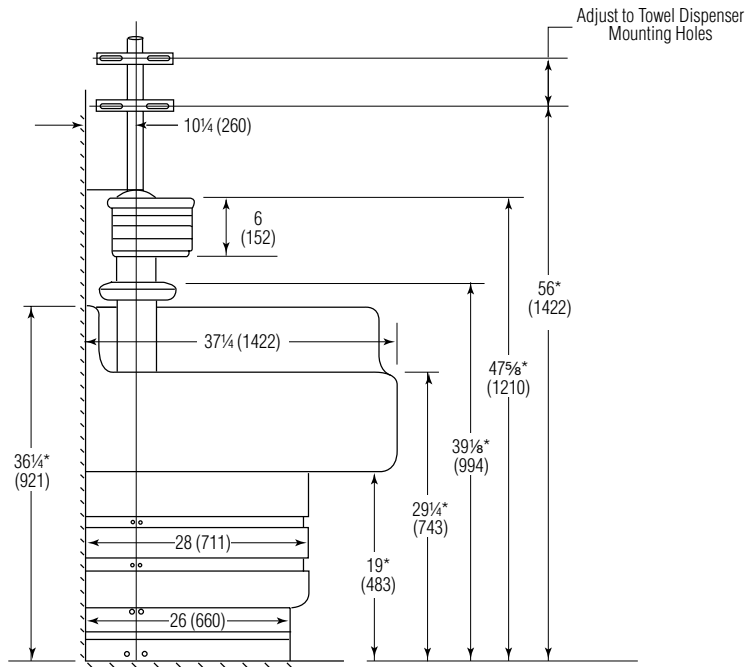
## Dimensions



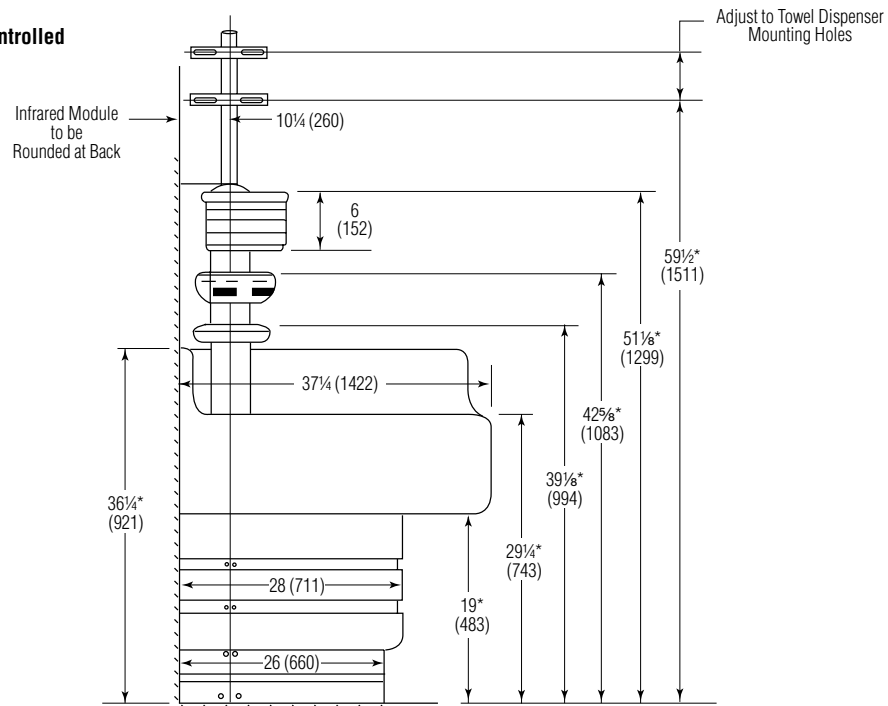
\*Juvenile Height for Both Models:  
Subtract 4" (102)

(mm)

### Foot Controlled



### Infrared Controlled



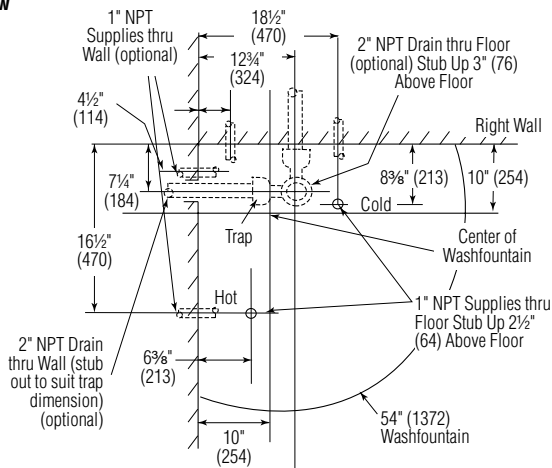


**Rough-Ins**

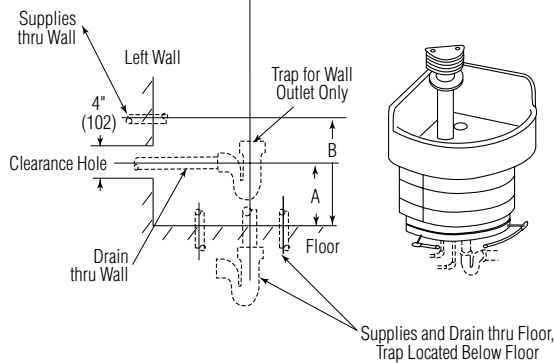
**Type A**

– Off-line vent with supplies from below

**Top View**



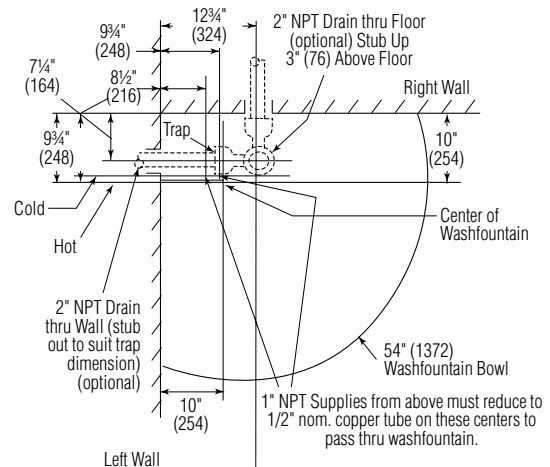
**Side View**



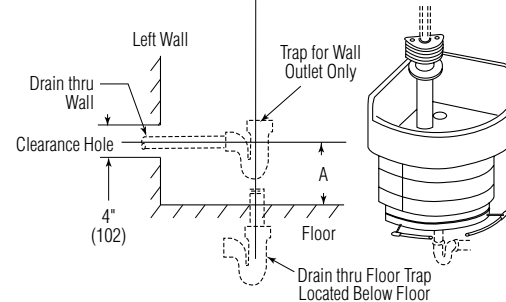
**Type O**

– Off-line vent with supplies from above.

**Top View**



**Side View**



**Coupling and Nipple Hookups:** Use the chart to the right when hookup is made with a coupling and nipple. When trap is installed tight to bottom of bowl, dimension **A** depends on design of trap. (2" drain through wall must not interfere with diagonal frame member on pedestal).

Dim.	Right Wall		Left Wall	
	STD.	JUV.	STD.	JUV.
<b>A</b>	11 1/4" to 13 1/4" (286 - 337)	9 1/4" to 10 1/4" (235 - 260)	6" to 11" (152 - 279)	6" to 8 1/2" (152 - 216)
<b>B</b>	12" (305)	8 1/4" (210)	12" (305)	8 1/4" (210)

**Rough-In Notes**

1. All pipes and fittings not furnished by Bradley are shown in broken lines.
2. Supply lines for one to two washfountains should be 1", for three washfountains 1 1/4", for more than three washfountains, pipe sizes should be increased proportionately.
3. Overhead supplies must be reduced to 1/2" copper tube to pass through support tube.
4. Check valve inlets are 1/2" NPT.
5. UPC and IPC restrict the vertical distance from the fixture outlet to the trap weir to not more than 24" (610). Check state and local codes for variances.

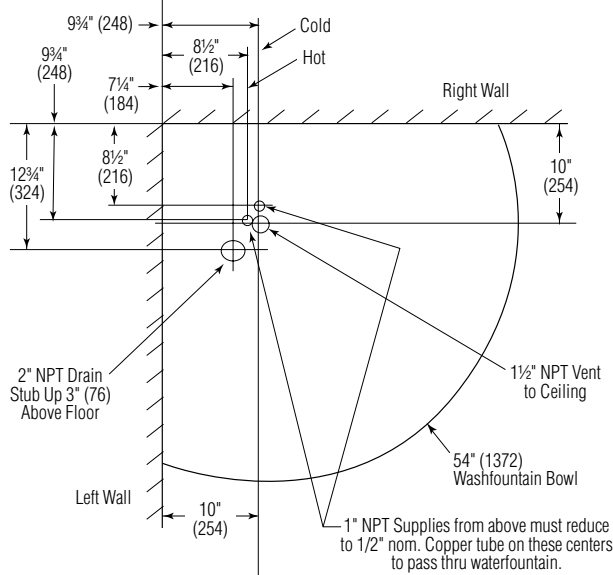


Rough-In Dimensions for Drain and Supplies

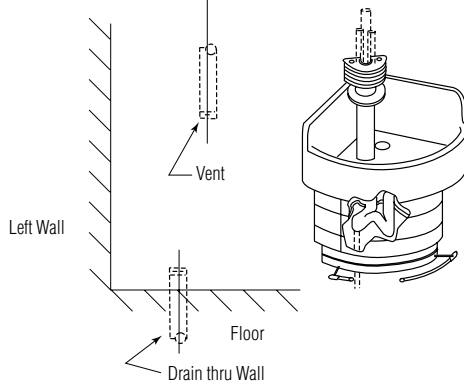
Type B Drain

– Centrally rising vent with supplies from above.

Top View



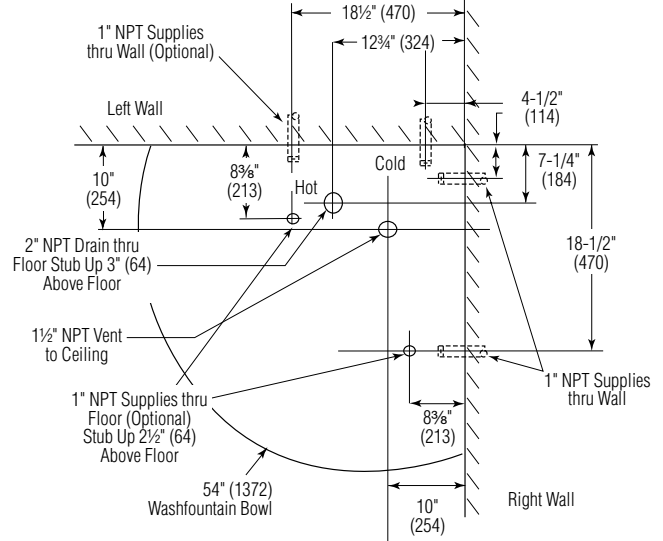
Side View



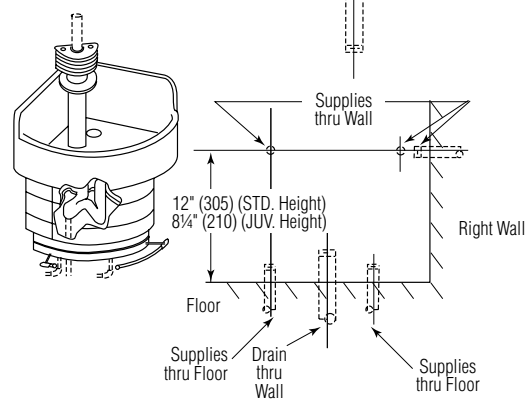
Type H Drain

– Centrally rising vent with supplies from below.

Top View



Side View



Rough-In Notes

1. All pipes and fittings not furnished by Bradley are shown in broken lines.
2. Supply lines for one to two washfountains should be 1", for three washfountains 1 1/4"; for more than three washfountains, pipe sizes should be increased proportionately.
3. Overhead supplies must be reduced to 1/2" copper tube to pass through support tube.
4. Check valve inlets are 1/2" NPT.
5. For maximum rigidity of sprayhead/support tube assembly, use 1 1/2" NPT galvanized pipe for vent. Use of plastic or copper for vent is not recommended.