

- Adaptable to handicap height
- 1-1/2" NPT inlet connection
- All units factory tested for proper operation

### Specifications

#### Materials

All cabinet materials, including interior piping are Type 304 stainless steel. The fixture is made from heavy gauge stainless steel with seamless welded surfaces.

#### Construction

All welded construction with exposed welds ground smooth, and all accessible seams and voids eliminated. Fixture will withstand up to 5,000 lb. load on front area of toilet (certified test results of such loading are available upon request). Standard consumption (3.4 GPF). Elongated die-drawn bowl has blowout jet action for positive flush. 30 PSI (flowing into flush valve) required for flushing. Trap has 3-1/2" seal, will pass 2-5/8" diameter ball, and is fully enclosed. **Low consumption (1.6 GPF) not available on these models.**



*When choosing the Floodbuster option, a minimum of 35 PSI flowing into the Floodbuster valve is required.*

#### Flush Valve

Flush valve is not included as standard equipment with the unit.

#### Finish

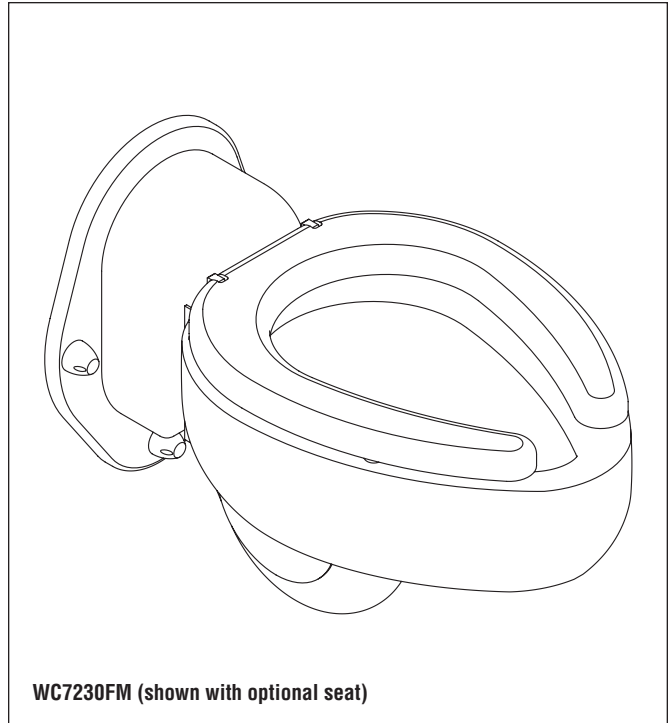
All exposed steel surfaces to have a bead blast finish (optional #4 satin polished finish, integral contoured seat polished to option #7 sanitary finish). Hinged plastic seat is white.

#### Wall Anchoring

Unit secured with 5/8" mounting studs (furnished by others) and vandal-resistant cap nuts supplied with special driver. Suitable wall anchors furnished by others.



*Back-supplied fixture requires wall openings and accessible chase for installation and maintenance. Some field assembly may be required.*

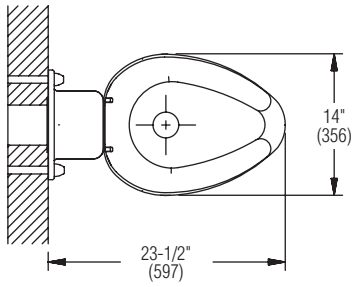


**WC7230FM (shown with optional seat)**

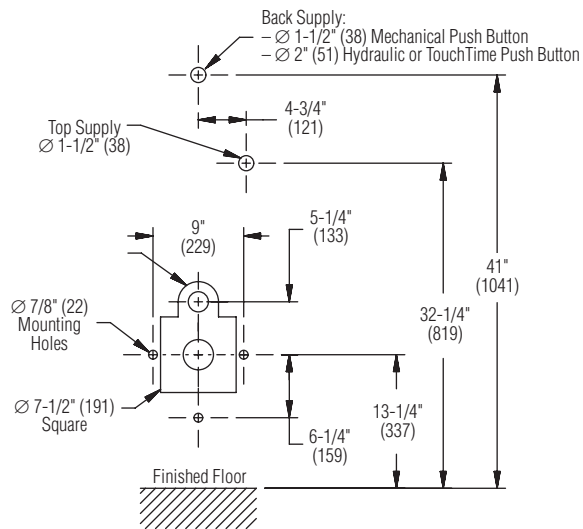
Model	Description
<input type="checkbox"/> <b>WC7230FM</b>	Front-Mounted Bubble Back Blowout Jet Stainless Steel Toilet
<b>Required Selections</b> (Must select one from each category)	
<b>Supply:</b>	
<input type="checkbox"/> <b>BACK</b> Back Supply	<input type="checkbox"/> <b>TOP</b> Top Supply
<b>Toilet Seat (select one):</b>	
<input type="checkbox"/> <b>ISEAT</b> Integral Seat	<input type="checkbox"/> <b>PSEAT</b> Plastic Seat (White)
<b>Finish (select one):</b>	
<input type="checkbox"/> <b>BB</b> Bead Blast (Standard)	<input type="checkbox"/> <b>PS</b> Polished Stainless Steel
<b>Optional Selections</b>	
<b>Water Closet Waste Outlet Accessories:</b>	
<input type="checkbox"/> <b>GSKT</b> Neoprene Flange Gasket	
<b>Floodbuster (must be located in chase):</b>	
<input type="checkbox"/> <b>FBM</b> Mechanical Floodbuster	



**TOP VIEW**



**ROUGH-IN**



**SIDE VIEW**

